

Product datasheet for **TA336680**

IKAP (IKBKAP) Rabbit Polyclonal Antibody

Product data:

Product Type:	Primary Antibodies
Applications:	WB
Recommended Dilution:	WB: 1:500 -1:1000
Reactivity:	Human
Host:	Rabbit
Clonality:	Polyclonal
Immunogen:	C-terminus of the human IKAP protein (proprietary)
Formulation:	PBS, 0.05% Sodium Azide. Store at 4C short term. Aliquot and store at -20C long term. Avoid freeze-thaw cycles.
Concentration:	lot specific
Purification:	Immunogen affinity purified
Conjugation:	Unconjugated
Storage:	Store at -20°C as received.
Stability:	Stable for 12 months from date of receipt.
Gene Name:	inhibitor of kappa light polypeptide gene enhancer in B-cells, kinase complex-associated protein
Database Link:	NP_003631 Entrez Gene 8518 Human O95163
Background:	The transcription factor NF-kappa B coordinates the activation of numerous genes in response to pathogens and pro-inflammatory cytokines, and is, therefore, vital in the development of acute and chronic inflammatory diseases. NF-kappa B is activated by cytokine-activated IKB kinases (IKKs); IKK-alpha and IKK-beta isozymes are found in large complexes. These large, interleukin-1-inducible IKK complexes have been found to contain a new protein, termed IKK-complex-associated protein (IKAP), which can bind NIK and IKKs and assemble them into an active kinase complex. IKAP is a scaffold protein and a regulator for 3 different kinases involved in pro-inflammatory cytokine signaling.
Synonyms:	DYS; ELP1; FD; IKAP; IKI3; TOT1

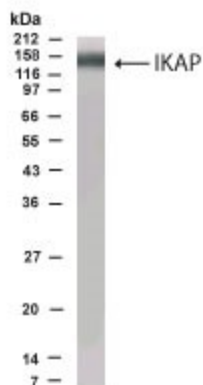


[View online »](#)

Note: Western blot: Use at 1:500 to 1:1,000 dilution. However, the investigator should determine the optimal dilution for their specific application.

Protein Families: Druggable Genome

Product images:



Western Blot: IKBKAP Antibody TA336680 - Analysis of IKBKAP in Interleukin-1-stimulated 293 cells using TA336680 at 1:500 dilution