

## Product datasheet for **TA336678**

### ESE1 (ELF3) Rabbit Polyclonal Antibody

#### Product data:

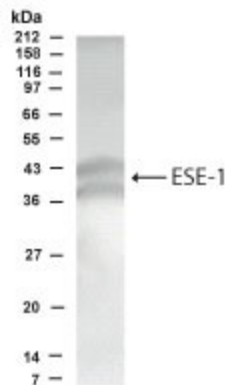
Product Type:	Primary Antibodies
Applications:	WB
Recommended Dilution:	WB: 1:500
Reactivity:	Human
Host:	Rabbit
Clonality:	Polyclonal
Immunogen:	N-terminal sequence and C-terminal sequence of the human ESE-1 protein
Formulation:	PBS, 0.05% Sodium Azide. Store at 4C short term. Aliquot and store at -20C long term. Avoid freeze-thaw cycles.
Concentration:	lot specific
Purification:	Immunogen affinity purified
Conjugation:	Unconjugated
Storage:	Store at -20°C as received.
Stability:	Stable for 12 months from date of receipt.
Gene Name:	E74 like ETS transcription factor 3
Database Link:	<a href="#">NP_004424</a> <a href="#">Entrez Gene 1999 Human P78545</a>
Background:	ESE-1 (Epithelium-Specific Ets) is a novel, highly tissue-restricted member of the ets transcription factor/oncogene family, which has features distinct from those of any other ets-related factor. ESE-1 binds with high affinity to and transactivates the ets binding site in the promoter of the keratinocyte terminal differentiation marker gene, SPRR2A. ESE-1 is a critical regulator of epithelial cell differentiation.
Synonyms:	EPR-1; ERT; ESE-1; ESX
Note:	For Western Blotting, use at a dilution of 1:500 (ECL). Use in Immunocytochemistry/immunofluorescence reported in scientific literature (PMID: 21660457)
Protein Families:	Transcription Factors



[View online »](#)

**Product images:**


Western Blot: ESE1 Antibody TA336678 - WB detection of ESE1 in T84 colon carcinoma cells with TA336678 antibody at a dilution of 1:500. Please note that this antibody detects both isoforms of ESE1 with expected molecular weight of 41.4 kDa and 39.3 kDa.



Western Blot: ESE1 Antibody TA336678 - Western blot analysis of ESE1 in T84 colon carcinoma cells using TA336678 at 1:500 dilution. Recognizes both isoforms of ESE1.