

Product datasheet for **TA336674**

AKT3 Mouse Monoclonal Antibody [Clone ID: 66C1247]

Product data:

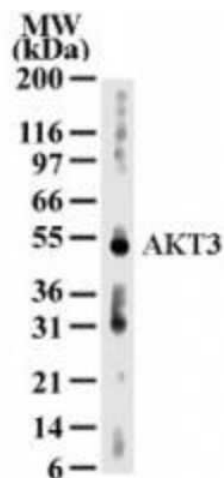
Product Type:	Primary Antibodies
Clone Name:	66C1247
Applications:	ICC/IF, WB
Recommended Dilution:	Western Blot: 1:100-1:2000, Immunocytochemistry/ Immunofluorescence
Reactivity:	Human, Mouse, Rat
Host:	Mouse
Isotype:	IgG1
Clonality:	Monoclonal
Immunogen:	This monoclonal antibody was raised against a synthetic peptide corresponding to amino acid residues 119-136 (CSPTSQIDNIGEEEMDAS) of human Akt3, GenBank no. gi 4574744 gb AAD24196.1 AF135794_1. This sequence is identical in human, mouse, rat, cow, dog, a
Formulation:	PBS containing 0.05% BSA, 0.05% Sodium Azide. Store at 4C short term. Aliquot and store at -20C long term. Avoid freeze-thaw cycles.
Concentration:	lot specific
Purification:	Protein G purified
Conjugation:	Unconjugated
Storage:	Store at -20°C as received.
Stability:	Stable for 12 months from date of receipt.
Gene Name:	AKT serine/threonine kinase 3
Database Link:	NP_005456 Entrez Gene 23797 Mouse Entrez Gene 29414 Rat Entrez Gene 10000 Human Q9Y243



[View online »](#)

- Background:** Akt, protein kinase B (PKB), is a serine/threonine kinase which is involved in many cellular signaling pathways and acts as a transducer of many functions initiated by growth factor receptors that activate phosphatidylinositol 3-kinase (PI 3-kinase). The major activity of Akt/PKB is to mediate cell survival. Akt/PKB is also believed to be a critical factor in the genesis of cancer as the tumor suppressor PTEN was found to antagonize PI-3 kinase and Akt/PKB kinase activity. There are 3 known isoforms of this enzyme in mammalian cells (1/alpha, 2/beta and 3/gamma). Akt1, 2 and 3 contain a key regulatory serine phosphorylation site in the carboxy-terminal region of the protein. Akt/PKB phosphorylation is critical for its activity.
- Synonyms:** MPPH; MPPH2; PKB-GAMMA; PKBG; PRKBG; RAC-gamma; RAC-PK-gamma; STK-2
- Note:** Western Blot: Predicted molecular weight: 50 kDa. NB120-13919 can be used for detection of AKT3 in human, mouse and rat by western blot analysis.
- Protein Families:** Druggable Genome, ES Cell Differentiation/IPS, Protein Kinase
- Protein Pathways:** Acute myeloid leukemia, Adipocytokine signaling pathway, Apoptosis, B cell receptor signaling pathway, Chemokine signaling pathway, Chronic myeloid leukemia, Colorectal cancer, Endometrial cancer, ErbB signaling pathway, Fc epsilon RI signaling pathway, Fc gamma R-mediated phagocytosis, Focal adhesion, Glioma, Insulin signaling pathway, Jak-STAT signaling pathway, MAPK signaling pathway, Melanoma, mTOR signaling pathway, Neurotrophin signaling pathway, Non-small cell lung cancer, Pancreatic cancer, Pathways in cancer, Progesterone-mediated oocyte maturation, Prostate cancer, Renal cell carcinoma, Small cell lung cancer, T cell receptor signaling pathway, Tight junction, Toll-like receptor signaling pathway, VEGF signaling pathway

Product images:



Western Blot: AKT3 Antibody (66C1247)
TA336674 - Analysis for AKT3 using TA336674 at 2
ug/ml dilution against 30 ug/lane of human
kidney lysate.