

Product datasheet for **TA336672**

IL23 Receptor (IL23R) Rabbit Polyclonal Antibody

Product data:

Product Type:	Primary Antibodies
Applications:	FC, IHC, Simple Western, WB
Recommended Dilution:	Flow (Cell Surface), Immunohistochemistry-Paraffin: 5-10 ug/ml, Simple Western: 1:10, Flow Cytometry: 1:10-1:1000, Immunohistochemistry: 5-10 ug/ml, Western Blot: 0.5-1.0 ug/ml
Reactivity:	Human, Mouse
Host:	Rabbit
Clonality:	Polyclonal
Immunogen:	Synthetic peptide located at amino acids 439-455 (EIFIPEHKPTDYKKENT) of human IL-23R (NP_653302).
Formulation:	PBS with 0.09% Sodium Azide. Store at 4C short term. Aliquot and store at -20C long term. Avoid freeze-thaw cycles.
Concentration:	lot specific
Purification:	Protein G purified
Conjugation:	Unconjugated
Storage:	Store at -20°C as received.
Stability:	Stable for 12 months from date of receipt.
Predicted Protein Size:	72 kDa
Gene Name:	interleukin 23 receptor
Database Link:	NP_653302 Entrez Gene 209590 Mouse Entrez Gene 149233 Human Q5VWK5
Background:	IL-23 is a heterodimeric cytokine that shares biological properties with proinflammatory cytokines. IL-23 is composed of the IL-12p40 soluble receptor subunit and a novel cytokine-like subunit related to IL-12p35, termed p19. IL-23 mediates its cellular function by binding to IL-23R, which pairs with IL-12Rb1 to confer IL-23 responsiveness. However, human IL-12 does not bind to human IL-23R. IL-23 has been shown to possess biological activities on T cells that are similar as well distinct from those of IL-12.
Synonyms:	interleukin 23 receptor; OTTHUMP00000010660



[View online »](#)

Note: Based on immunogen sequence, this antibody will recognize the 629 amino acid (~68 kDa), 390 AA (~42 kDa) and 227 AA (~26 kDa) forms of human IL-23R. Flow (Cell Surface): See Kortylweski et al, 2009 for details. Use in Flow cell surface reported in scientific literature (PMID 24358364)

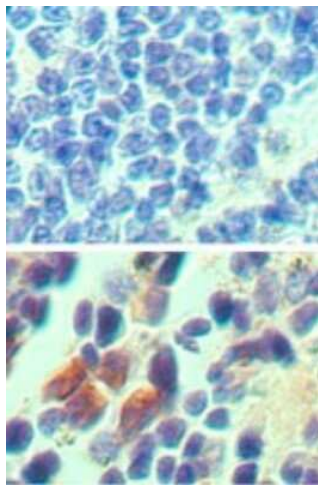
Protein Families: Druggable Genome, Transmembrane

Protein Pathways: Cytokine-cytokine receptor interaction, Jak-STAT signaling pathway

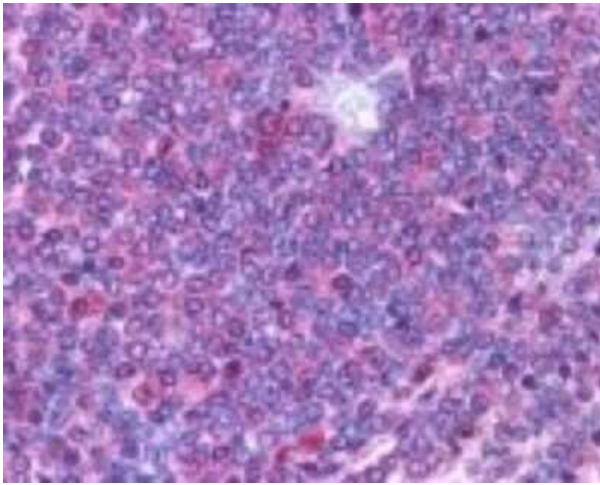
Product images:



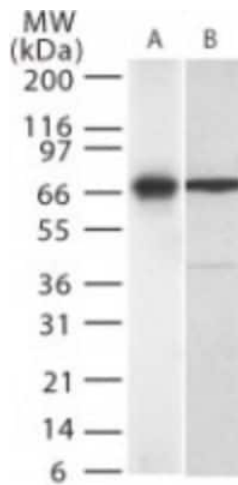
Simple Western: IL-23 R Antibody [NB600-1147] - Lane view shows a specific band for IL23 Receptor in 0.5 mg/ml of NIH-3T3 lysate. This experiment was performed under reducing conditions using the 12-230 kDa separation system.



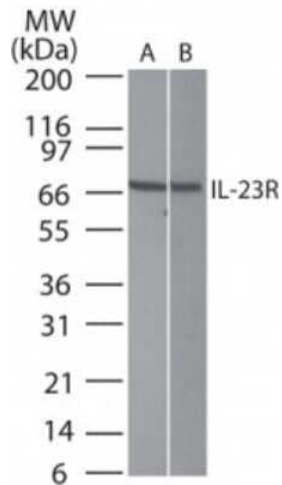
Immunohistochemistry-Paraffin: IL-23 R Antibody [NB600-1147] - Analysis of Mouse spleen tissue probed with isotype control antibody (top) and IL-23R antibody (bottom) at 5 ug/ml.



Immunohistochemistry-Paraffin: IL-23 R Antibody [NB600-1147] - Staining of IL-23 Receptor in Human periarterial lymphatic sheath lymphocytes (spleen) at 10 ug/ml. Hematoxylin-eosin counterstain.



Western Blot: IL-23 R Antibody [NB600-1147] - Analysis of IL-23R in (A) Jurkat and (B) NIH 3T3 cells. 1:500 dilution.



Western Blot: IL-23 R Antibody [NB600-1147] - Analysis using IL-23R antibody. Lysate from (A) human Jurkat and (B) Mouse NIH 3T3 cells probed with IL-23R antibody at 0.5 ug/ml.