

## Product datasheet for **TA336668**

### PDPN Hamster Monoclonal Antibody [Clone ID: 8.1.1]

#### Product data:

Product Type:	Primary Antibodies
Clone Name:	8.1.1
Applications:	CyTOF-ready, Electron Microscopy, FC, IHC, IP, WB
Recommended Dilution:	Western Blot: 1:1000-1:2000, Immunohistochemistry-Paraffin: 1:100-1:500, Immunohistochemistry-Frozen, Electron Microscopy, Flow Cytometry: 1:400, Immunohistochemistry: 1:100-1:500, Immunocytochemistry/ Immunofluorescence: 1-5ug/ml, Immunoprecipitation: 1:10-1:500, CyTOF-ready
Reactivity:	Mouse (Does not react with: Human)
Host:	Hamster
Isotype:	IgG
Clonality:	Monoclonal
Immunogen:	Murine thymic stromal cell lines
Formulation:	PBS containing 0.05% BSA, 0.05% Sodium Azide. Store at 4C short term. Aliquot and store at -20C long term. Avoid freeze-thaw cycles.
Concentration:	lot specific
Purification:	Protein G purified
Conjugation:	Unconjugated
Storage:	Store at -20°C as received.
Stability:	Stable for 12 months from date of receipt.
Predicted Protein Size:	40 kDa
Gene Name:	podoplanin
Database Link:	<a href="#">NP_006465</a> <a href="#">Entrez Gene 14726 Mouse</a> <a href="#">Entrez Gene 10630 Human</a> <a href="#">Q86YL7</a>
Synonyms:	AGGRUS; GP36; Gp38; GP40; HT1A-1; OTS8; PA2.26; T1A; T1A-2; T1A2; T11A

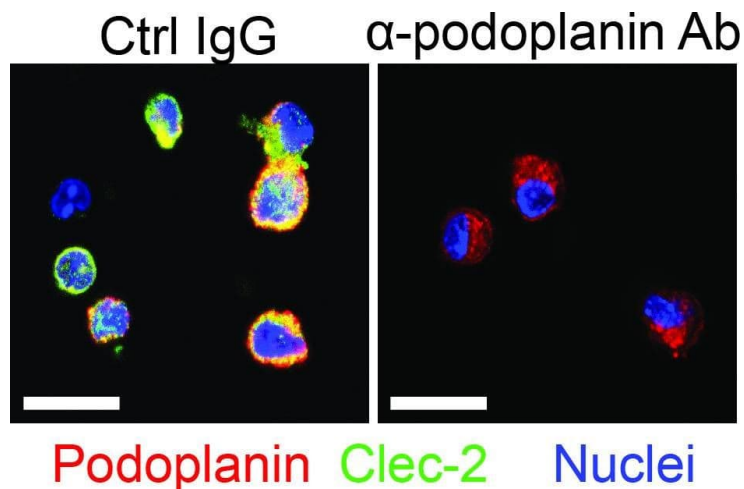


[View online »](#)

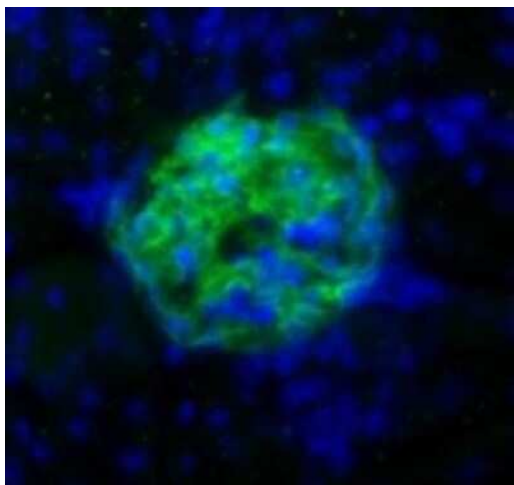
**Note:** This Podoplanin (8.1.1) antibody is useful in Flow Cytometry, Immunocytochemistry/Immunofluorescence, Immunohistochemistry on paraffin-embedded sections. Electron Microscopy and Immunohistochemistry-Frozen were reported in scientific literature. Immunoprecipitation and Western Blot, where a band can be seen at ~40 kDa. Optimal dilutions/concentrations should be determined by the end user.

**Protein Families:** Druggable Genome, Transmembrane

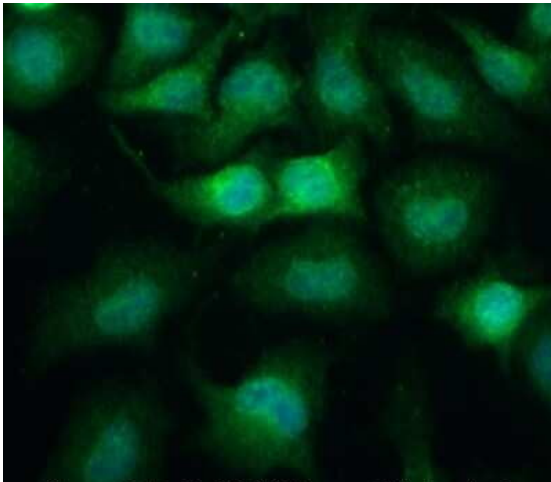
**Product images:**



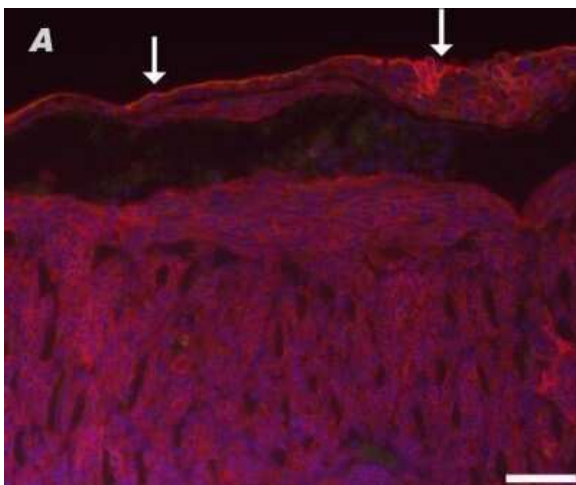
Podoplanin expressing on Mφs mediates interactions with platelets. Mφs were isolated from wild-type (WT) mice treated with acetaminophen (APAP) for 3 hr. The cells were treated in vitro with either control IgG (Ctrl IgG) or an anti-podoplanin antibody (α-podoplanin Ab) before incubation with platelets. Immunofluorescence (IF) staining was performed to detect podoplanin on Mφs and C-type lectin-like receptor 2 (Clec-2) on platelets. Scale bar, 25 μm.



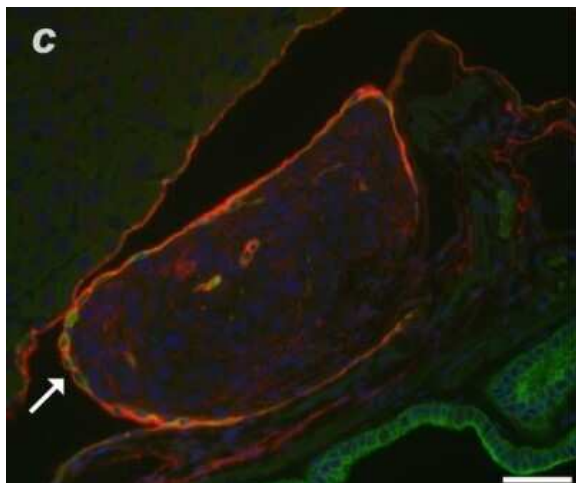
Immunohistochemistry: Podoplanin Antibody (8.1.1) - BSA Free TA336668 - Podoplanin (8.1.1) antibody labeling (Green) of glomeruli from mouse kidney. Nuclei were counterstained with DAPI (Blue).



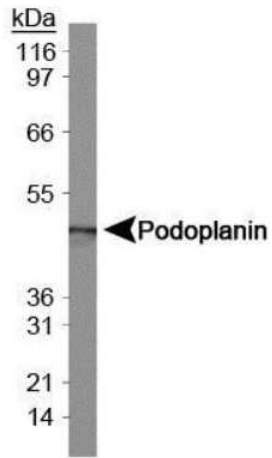
Immunocytochemistry/Immunofluorescence: Podoplanin Antibody (8.1.1) - BSA Free TA336668 - Neuro2a cells were fixed for 10 minutes using 10% formalin and then permeabilized for 5 minutes using 1X PBS + 0.05% Triton X-100. The cells were incubated with anti- at 5 ug/ml overnight at 4C and detected with an anti-Golden Syrian hamster DyLight 488 (Green) at a 1:500 dilution. Nuclei were counterstained with DAPI (Blue). Cells were imaged using a 40X objective.



Immunohistochemistry-Paraffin: Podoplanin Antibody (8.1.1) - BSA Free TA336668 - Staining for podoplanin (red) and cytokeratins (green) in malignant serosal tumors morphologically consistent with sarcomatous mesothelioma. In A, the lining mesothelium (solid arrows) stained positively for podoplanin in this double label immunofluorescent image of diaphragm. The cells beneath the mesothelial lining are also red due to expression of podoplanin and these are cells of a malignant serosal tumor. Promotion of lung adenocarcinoma following inhalation exposure to multi-walled carbon nanotubes. *Part Fibre Toxicol* (2014)



Immunohistochemistry-Paraffin: Podoplanin Antibody (8.1.1) - BSA Free TA336668 - Staining for podoplanin (red) and cytokeratins (green) in malignant serosal tumors morphologically consistent with sarcomatous mesothelioma. In C, a double label immunofluorescent image demonstrates a malignant serosal tumor between the liver and gall bladder that is lined by reactive mesothelium (solid arrow) which stains red for podoplanin as well as green for cytokeratins. The cells of the subjacent malignant serosal tumor stain weakly red for podoplanin. Promotion of lung adenocarcinoma following inhalation exposure to multi-walled carbon nanotubes. *Part Fibre Toxicol* (2014)



Western Blot: Podoplanin Antibody (8.1.1) - BSA Free TA336668 - Analysis of Podoplanin in mouse kidney tissue extract.