

Product datasheet for **TA336665**

Apoptosis repressor with CARD (NOL3) Rabbit Polyclonal Antibody

Product data:

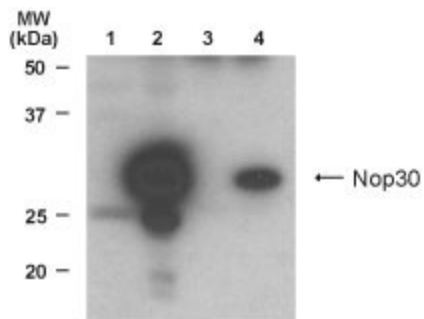
Product Type:	Primary Antibodies
Applications:	WB
Recommended Dilution:	WB: 1:100-1:2000
Reactivity:	Human
Host:	Rabbit
Clonality:	Polyclonal
Immunogen:	A synthetic peptide made to residues 125-141 (PELQLTRPGALRAPRR) of the human Nop30 protein.
Formulation:	PBS, 0.05% Sodium Azide. Store at 4C short term. Aliquot and store at -20C long term. Avoid freeze-thaw cycles.
Concentration:	lot specific
Purification:	Immunogen affinity purified
Conjugation:	Unconjugated
Storage:	Store at -20°C as received.
Stability:	Stable for 12 months from date of receipt.
Predicted Protein Size:	33 kDa
Gene Name:	nucleolar protein 3
Database Link:	NP_003937 Entrez Gene 8996 Human O60936
Background:	Nop30 (nucleolar protein of 30 kDa) is predominantly expressed in muscle and is present in the nucleoplasm and concentrated in nucleoli. The predominant nucleolar localization of Nop30 points to a potential role in RNA processing in muscle nucleoli. A CARD domain containing protein, designated ARC for apoptosis repressor with CARD is related to Nop30 with a different carboxyl terminus.
Synonyms:	ARC; FCM; MYP; NOP; NOP30



[View online »](#)

Note: This antibody has been tested in Western blot, where a band at ~25 kDa is seen. No other applications have been tested. Western blot - Use at 1:500 to 1:1,000 dilution. *The investigator should determine the optimal dilution for each assay.

Product images:



Western Blot: NOL3 Antibody TA336665 - Analysis of TA336665 at 1:1000 dilution. Lane 1: NIH3T3 cells. Lane 2: NIH3T3 cells transfected with NOL3. Lane 3: Recombinant ARC. Lane 4: Recombinant NOL3.