

Product datasheet for **TA336663**

Caspase 10 (CASP10) Rabbit Polyclonal Antibody

Product data:

Product Type:	Primary Antibodies
Applications:	WB
Recommended Dilution:	WB: 1:100-1:2000
Reactivity:	Human, Mouse, Rat, Chicken
Host:	Rabbit
Clonality:	Polyclonal
Immunogen:	Synthetic peptide, corresponding to N-terminus of Human Caspase 10
Formulation:	PBS, 0.05% Sodium Azide. Store at 4C short term. Aliquot and store at -20C long term. Avoid freeze-thaw cycles.
Concentration:	lot specific
Purification:	Immunogen affinity purified
Conjugation:	Unconjugated
Storage:	Store at -20°C as received.
Stability:	Stable for 12 months from date of receipt.
Predicted Protein Size:	54 kDa
Gene Name:	caspase 10
Database Link:	NP_001193453 Entrez Gene 843 Human Q92851
Background:	Caspases are death effector domain-containing cysteine aspartases presumed to be at or near the apex of apoptotic signaling pathways. All known isoforms of caspase-10 are abundantly expressed in fetal lung, kidney, and skeletal muscle but are very poorly expressed or absent in these tissues in the adult, implying a possible role for the caspase-10 family in fetal development.
Synonyms:	ALPS2; FLICE2; MCH4
Note:	Western blot- Use at 1:500 to 1:1,000 dilution. However, the investigator should determine the optimal dilution for a specific application.

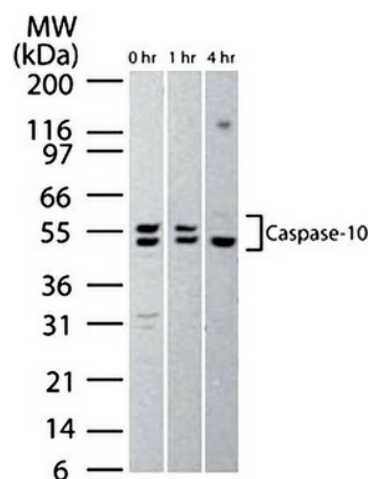


[View online »](#)

Protein Families: Druggable Genome, Protease

Protein Pathways: Apoptosis, RIG-I-like receptor signaling pathway

Product images:



Western Blot: Caspase 10 Antibody TA336663 - WB detection of Caspase-10 in Jurkat cells using TA336663 at a dilution of 1:500. Before making the lysates, the cells were treated with 2 μ M staurosporine for different time periods as shown in the image.