

Product datasheet for **TA336660**

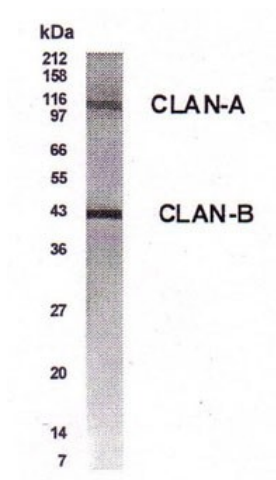
CARD12 (NLRC4) Rabbit Polyclonal Antibody

Product data:

Product Type:	Primary Antibodies
Applications:	WB
Recommended Dilution:	WB: 1:500-1:1000
Reactivity:	Human
Host:	Rabbit
Clonality:	Polyclonal
Immunogen:	N terminus (MNFIKDNSRALIQRMGM) of the A and B isoforms of the human CLAN protein.
Formulation:	PBS, 0.05% Sodium Azide. Store at 4C short term. Aliquot and store at -20C long term. Avoid freeze-thaw cycles.
Concentration:	lot specific
Purification:	Immunogen affinity purified
Conjugation:	Unconjugated
Storage:	Store at -20°C as received.
Stability:	Stable for 12 months from date of receipt.
Gene Name:	NLR family, CARD domain containing 4
Database Link:	NP_067032 Entrez Gene 58484 Human Q9NPP4
Background:	A novel human CED-4-like gene, CLAN, is a caspase-associated recruitment domain (CARD)-containing proteins and is expressed at varying degrees in normal human tissues. It contributes to a number of intracellular processes including apoptosis, cytokine processing, and NF-kappa B activation.
Synonyms:	AIFEC; CARD12; CLAN; CLAN1; CLANA; CLANB; CLANC; CLAND; CLR2.1; FCAS4; IPAF
Note:	This antibody is useful for western blot analysis where bands are seen around 110 kDa and 40 kDa representing isoforms A and B respectively.
Protein Pathways:	NOD-like receptor signaling pathway



[View online »](#)

Product images:

Western Blot: CARD12 Antibody TA336660 -
Western Blot analysis of CLAN in lung lysate with
anti-CLAN at a 1:500 dilution. Detects CLAN-A and
CLAN-B isoforms.