

Product datasheet for **TA336655**

BCL10 Rabbit Polyclonal Antibody

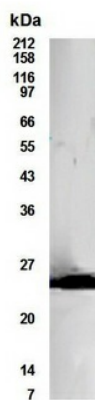
Product data:

Product Type:	Primary Antibodies
Applications:	WB
Recommended Dilution:	WB: 1:500 -1:1000
Reactivity:	Human
Host:	Rabbit
Clonality:	Polyclonal
Immunogen:	C-terminal sequence of human Bcl-10.
Formulation:	PBS, 0.05% Sodium Azide. Store at 4C short term. Aliquot and store at -20C long term. Avoid freeze-thaw cycles.
Concentration:	lot specific
Purification:	Immunogen affinity purified
Conjugation:	Unconjugated
Storage:	Store at -20°C as received.
Stability:	Stable for 12 months from date of receipt.
Predicted Protein Size:	26 kDa
Gene Name:	B-cell CLL/lymphoma 10
Database Link:	NP_003912 Entrez Gene 8915 Human O95999
Background:	Bcl10 is a novel gene with an amino-terminal caspase-recruiting domain (CARD), which is thought to be involved in mucosa-associated lymphoid tissue lymphomas and in the pathogenesis of several other human malignancies.
Synonyms:	c-E10; CARMEN; CIPER; CLAP; IMD37; mE10
Note:	Western blot - Use at 1:500 to 1:1,000 dilution. However, the investigator should determine the optimal dilution for a specific application such as immunohistochemistry.
Protein Families:	Druggable Genome
Protein Pathways:	B cell receptor signaling pathway, T cell receptor signaling pathway



[View online »](#)

Product images:



Western Blot: Bcl10 Antibody TA336655 - WB detection of Bcl10 in transfected 293 cells with TA336655 antibody at a dilution of 1:500