

Product datasheet for **TA336654**

p60 CAF1 (CHAF1B) Mouse Monoclonal Antibody [Clone ID: SS 24 1-68]

Product data:

Product Type:	Primary Antibodies
Clone Name:	SS 24 1-68
Applications:	ICC/IF, IP, WB
Recommended Dilution:	Immunocytochemistry/ Immunofluorescence: 1:10-1:2000, Immunoprecipitation: 0.1-1 ug, Western Blot: 1:1000
Reactivity:	Human, Mouse, Primate
Host:	Mouse
Isotype:	IgG1
Clonality:	Monoclonal
Immunogen:	Recombinant human CHAF1B [UniProt# Q13112]
Formulation:	Preservative: 0.05% Sodium Azide. Aliquot and store at -20C or -80C. Avoid freeze-thaw cycles.
Concentration:	lot specific
Purification:	Ascites
Conjugation:	Unconjugated
Storage:	Store at -20°C as received.
Stability:	Stable for 12 months from date of receipt.
Predicted Protein Size:	60 kDa
Gene Name:	chromatin assembly factor 1 subunit B
Database Link:	NP_005432 Entrez Gene 110749 Mouse Entrez Gene 8208 Human Q13112

Background: Chromatin assembly factor 1 (CAF-1) is a member of the histone chaperone family. It is required for inheritance of epigenetically determined chromosomal states, and in vitro, it promotes the assembly of chromatin during DNA replication and DNA repair. CAF-1 is a complex of three subunits; p150, p60, and p48. This complex is localized to the nucleus of human cells. Both the composition and the biochemical activity of CAF-1 are conserved among human, yeast, and Drosophila.



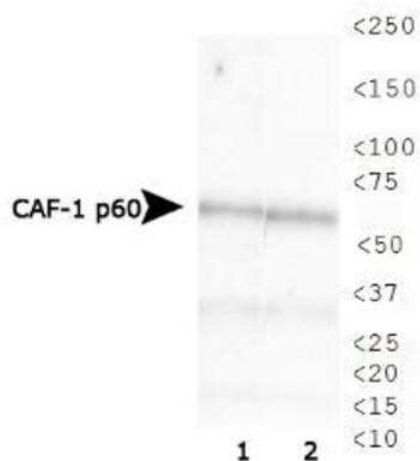
[View online »](#)

Synonyms: CAF-1; CAF-IP60; CAF1; CAF1A; CAF1P60; MPHOSPH7; MPP7

Note: This CHAF1B (SS 24 1-68) antibody is useful for Immunoprecipitation, Western blot and Immunocytochemistry/Immunofluorescence. In WB a band can be seen at ~60 kDa.

Protein Families: Druggable Genome, Transcription Factors

Product images:



Western Blot: CHAF1B Antibody (SS 24 1-68) TA336654 - Analysis of CAF-1 p60 expression in 1) HeLa and 2) Cos7 whole cell lysates using TA336654.