

Product datasheet for **TA336653**

Caspase 8 (CASP8) Mouse Monoclonal Antibody [Clone ID: FLICE 4-1-20]

Product data:

Product Type:	Primary Antibodies
Clone Name:	FLICE 4-1-20
Applications:	WB
Recommended Dilution:	Western Blot: 1:1000
Reactivity:	Human
Host:	Mouse
Isotype:	IgG1, kappa
Clonality:	Monoclonal
Immunogen:	Full-length recombinant human Caspase 8 [UniProt# Q14790]
Formulation:	Preservative: 0.05% Sodium Azide. Aliquot and store at -20C or -80C. Avoid freeze-thaw cycles.
Concentration:	lot specific
Purification:	Ascites
Conjugation:	Unconjugated
Storage:	Store at -20°C as received.
Stability:	Stable for 12 months from date of receipt.
Gene Name:	caspase 8
Database Link:	NP_203519 Entrez Gene 841 Human Q14790



[View online »](#)

Background:

Caspases are evolutionary conserved family of aspartate-specific cystein proteases which are essential part of apoptotic machinery and typically signal in a two-step cascade: 'initiator caspases' with large prodomains (such as caspase-1, -8 and -9) are first recruited into large protein complexes in which they undergo proximity-induced autoactivation and "executioner caspases" such as caspase-3 and -6, caspase-7 which are activated by initiator caspases via freeing of executioner caspases of their short inhibitory prodomain, allowing them to cleave a large set of cellular substrates. Localized in cytoplasm, caspase 7 is a heterotetramer that consists of two anti-parallel arranged heterodimers, each one formed by a 20 kD (p20) and a 11 kD (p11) subunit, and interacts with BIRC6/bruce. Caspase 7 cleaves/activates SREBPs and poly(ADP-ribose) polymerase (PARP). Its overexpression promotes apoptosis, and it also implicates in inflammation signaling. Therapeutic intervention with caspase-7 has been shown to prove beneficial in conditions where excessive cell death and/or inflammation contribute to diseases e.g. Alzheimer's disease, Huntington's disease, sepsis, rheumatoid arthritis, cancer and NIDDM.

Synonyms:

ALPS2B; CAP4; Casp-8; FLICE; MACH; MCH5

Note:

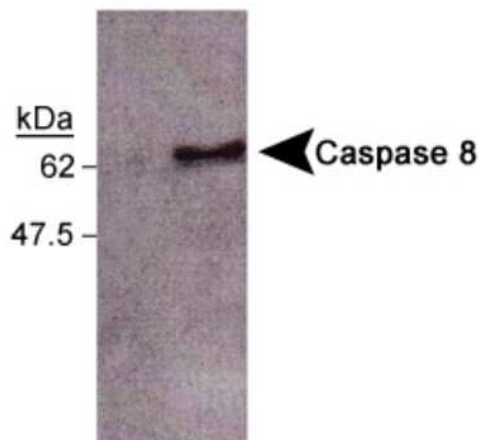
This Caspase 8 (FLICE 4-1-20) antibody is useful for Western Blot where a band is seen at 55 kDa representing the inactive form of Caspase 8 (see protocol for additional information). We also have reports that the antibody detects the active (pro) form of Caspase 8.

Protein Families:

Druggable Genome, Protease

Protein Pathways:

Alzheimer's disease, Apoptosis, Huntington's disease, NOD-like receptor signaling pathway, p53 signaling pathway, Pathways in cancer, RIG-I-like receptor signaling pathway, Toll-like receptor signaling pathway, Viral myocarditis

Product images:

Western Blot: Caspase 8 Antibody (FLICE 4-1-20) TA336653 - Detection of Caspase 8 (59 kDa) from HEK293 cell extract using TA336653 (1:500). Lanes 1 and 2 contain inactive and active Caspase 8, respectively.