

Product datasheet for **TA336651**

NuMA (NUMA1) Rabbit Polyclonal Antibody

Product data:

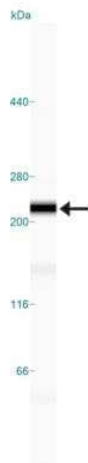
Product Type:	Primary Antibodies
Applications:	ICC/IF, IHC, IP, Simple Western, WB
Recommended Dilution:	Immunohistochemistry-Frozen, Immunocytochemistry/ Immunofluorescence: 1:500, Western Blot: 1:1000, Simple Western: 1:500, Immunohistochemistry: 5 ug/ml, Immunohistochemistry-Paraffin: 5 ug/ml, Immunoprecipitation: 1:10-1:500
Reactivity:	Human, Mouse, Rat, Mammalian, Primate
Host:	Rabbit
Clonality:	Polyclonal
Immunogen:	Full-length recombinant human NuMA expressed in insect Sf9 cells using baculovirus expression system, then purified to near homogeneity prior to immunization.
Formulation:	Aliquot and store at -20C or -80C. Avoid freeze-thaw cycles.
Concentration:	lot specific
Purification:	Whole antisera
Conjugation:	Unconjugated
Storage:	Store at -20°C as received.
Stability:	Stable for 12 months from date of receipt.
Gene Name:	nuclear mitotic apparatus protein 1
Database Link:	NP_001273490 Entrez Gene 101706 Mouse Entrez Gene 308870 Rat Entrez Gene 4926 Human Q14980
Background:	NuMA (nuclear mitotic apparatus) is a long coil-coiled protein that plays a role in the interphase and mitosis phases of a cell cycle. In interphase, it has been hypothesized to play a structural role in the nucleoskeleton that may be important in nuclear organization and functions. During mitosis, it is associated with spindle microtubule organization and chromosome positioning. Therefore, this antibody is useful as a cell cycle marker.
Synonyms:	NMP-22; NUMA



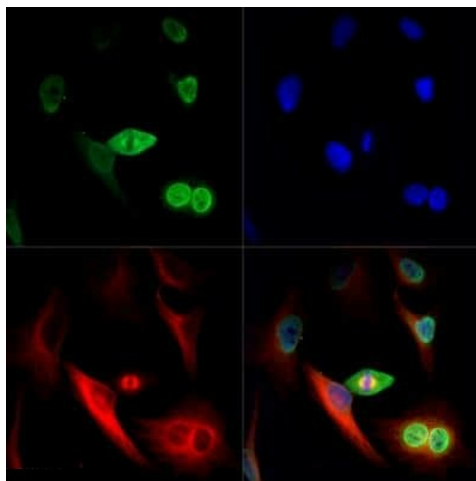
[View online »](#)

Note: This NuMA antibody is useful for Immunocytochemistry/Immunofluorescence, Immunoprecipitation and Western blot, where a band can be seen at 220 kDa. Immunohistochemistry-Frozen was reported in scientific literature.

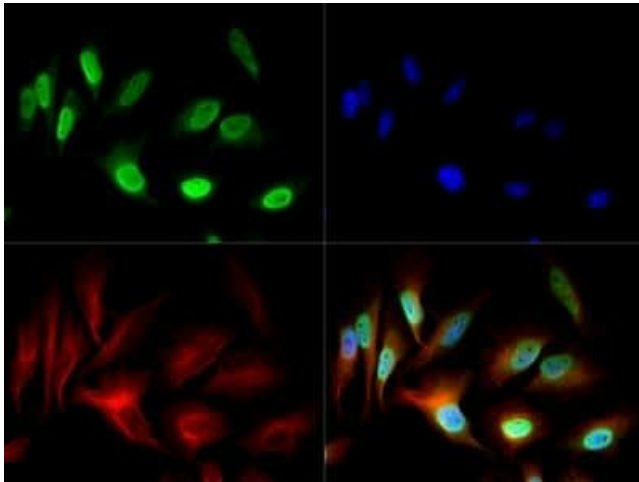
Product images:



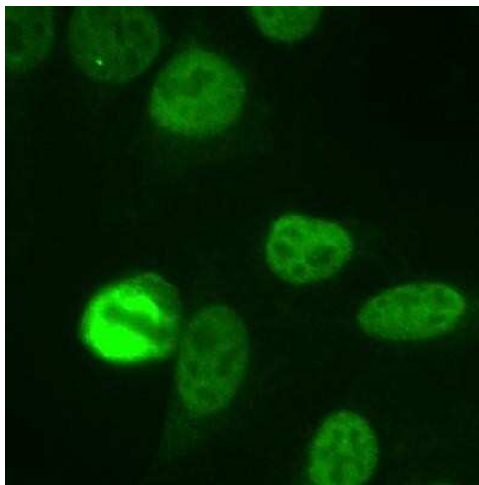
Simple Western: NuMA Antibody TA336651 - Image shows a specific band for NuMA in 0.2 mg/mL of HeLa lysate. This experiment was performed under reducing conditions using the 66-440 kDa separation system.



Immunocytochemistry/Immunofluorescence: NuMA Antibody TA336651 - NuMA antibody was tested in HeLa cells with DyLight 488 (green). Nuclei and alpha-tubulin were counterstained with DAPI (blue) and DyLight 550 (red).



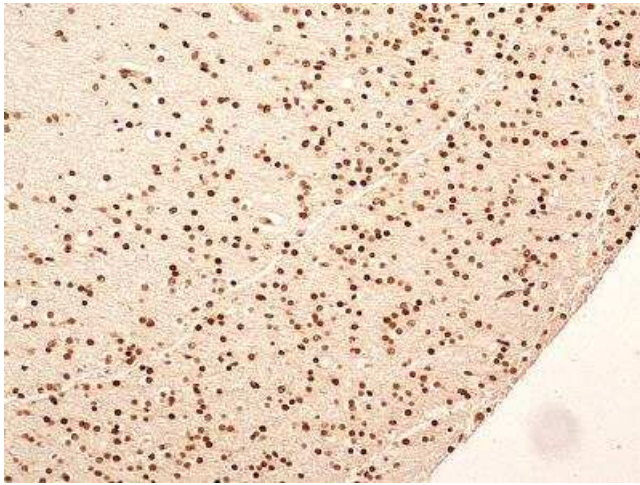
Immunocytochemistry/Immunofluorescence: NuMA Antibody TA336651 - NuMA antibody was tested in HeLa cells with DyLight 488 (green). Nuclei and alpha-tubulin were counterstained with DAPI (blue) and DyLight 550 (red).



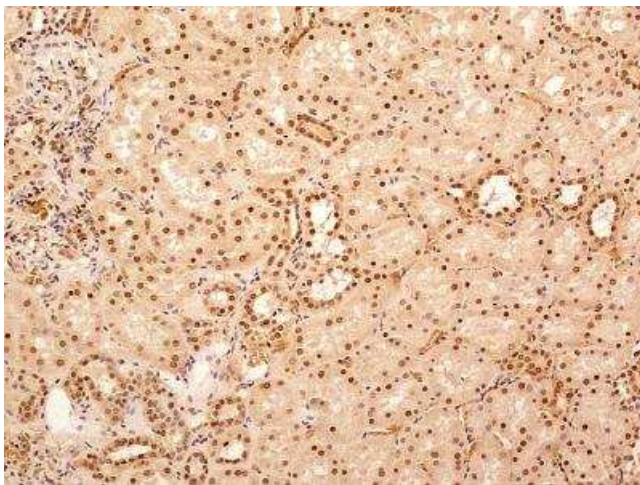
Immunocytochemistry/Immunofluorescence: NuMA Antibody TA336651 - Human HeLa cells fixed with 3.5% formaldehyde and stained with TA336651 at 1:1000. The staining pattern shows the typical pattern for NuMA in the cell nucleus during interphase and on spindles during mitosis.



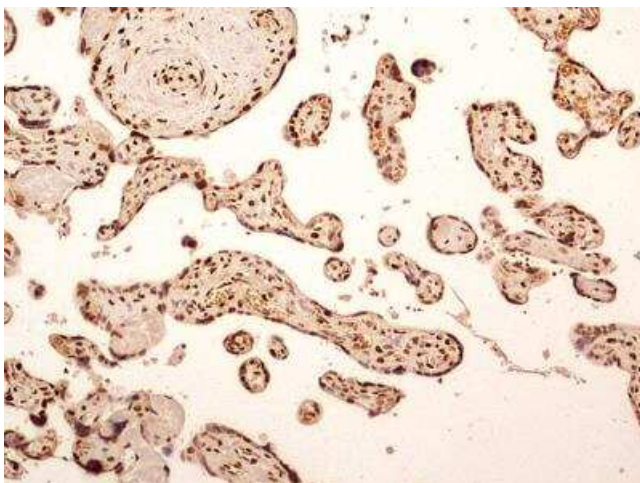
Immunohistochemistry-Paraffin: NuMA Antibody TA336651 - Analysis of FFPE tissue section of human normal spleen using rabbit polyclonal NuMA antibody (TA336651) at 5 ug/mL. Most of the cells developed a strong nuclear along with moderate cytoplasmic immuno-positivity for NuMA protein. 10X Magnification.



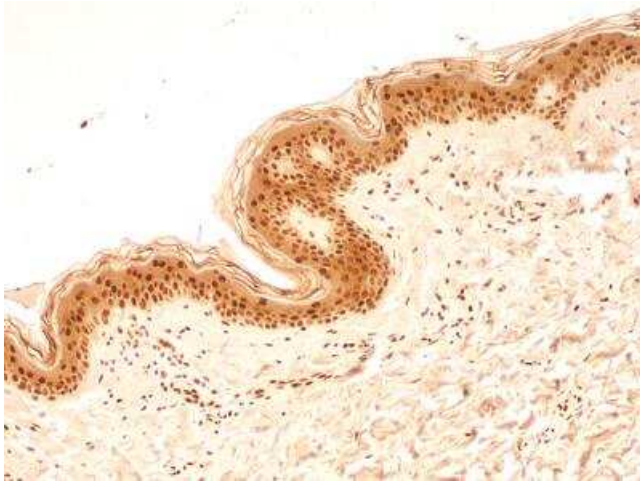
Immunohistochemistry-Paraffin: NuMA Antibody TA336651 - Analysis of FFPE tissue section of human normal brain using rabbit polyclonal NuMA antibody (TA336651) at 5 ug/mL. The cells in the brain tissue depicted strong specific nuclear along with weak cytoplasmic immunopositivity for NuMA protein. 10X Magnification.



Immunohistochemistry-Paraffin: NuMA Antibody TA336651 - Analysis of FFPE tissue section of human normal kidney using rabbit polyclonal NuMA antibody (TA336651) at 5 ug/mL. The cells of various tubules/ducts and Bowman's capsule in the renal tissue depicted strong nuclear along with relatively weak cytoplasmic immunopositivity for NuMA protein. 10X Magnification.



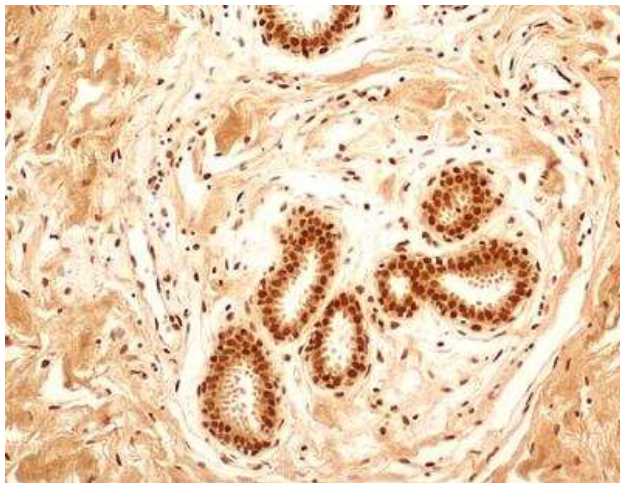
Immunohistochemistry-Paraffin: NuMA Antibody TA336651 - Analysis of FFPE tissue section of human placenta using rabbit polyclonal NuMA antibody (TA336651) at 5 ug/mL. Strong nuclear with moderate cytoplasmic immuno-reactivity of NuMA was observed in syncytiotrophoblast, cytotrophoblasts, Hofbauer cells and the endothelial cells of chorionic villi capillaries. 10X Magnification.



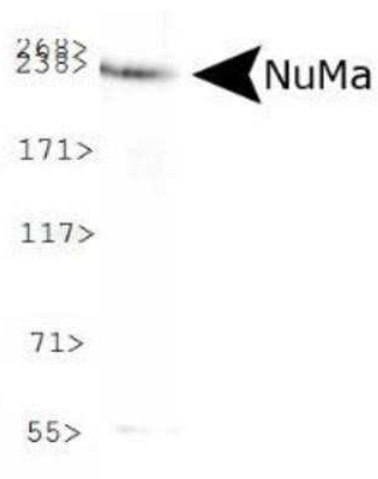
Immunohistochemistry-Paraffin: NuMA Antibody TA336651 - Analysis of FFPE tissue section of human normal skin using rabbit polyclonal NuMA antibody (TA336651) at 5 ug/mL. Almost all the cells in the epidermal layer and the cells in the connective tissue of dermal layer depicted very strong nuclear along with moderate cytoplasmic immuno-positivity for NuMA protein. 10X Magnification.



Immunohistochemistry-Paraffin: NuMA Antibody TA336651 - Analysis of FFPE tissue section of human normal prostate using rabbit polyclonal NuMA antibody (TA336651) at 5 ug/mL. The prostatic alveolar glandular epithelium as well as the surrounding fibromuscular stroma cells showed a strong nuclear immuno-reactivity for NuMA protein. Almost all the cells developed some cytoplasmic staining also. 10X Magnification.



Immunohistochemistry-Paraffin: NuMA Antibody TA336651 - Analysis of FFPE tissue section of human normal breast using rabbit polyclonal NuMA antibody (TA336651) at 5 ug/mL. The breast ductal/acinar epithelial cells, the myoepithelial cells and some cells in the surrounding connective tissue depicted a strong nuclear along with moderate cytoplasmic immuno-positivity for NuMA protein. The intra-lobular and the surrounding connective tissue also developed weak/potentially non-specific staining. 10X Magnification.



Western Blot: NuMA Antibody TA336651 -
Analysis of NuMA expression in Cos7 whole cell
lysate.