

## Product datasheet for **TA336649**

### Cyclin E2 (CCNE2) Rabbit Polyclonal Antibody

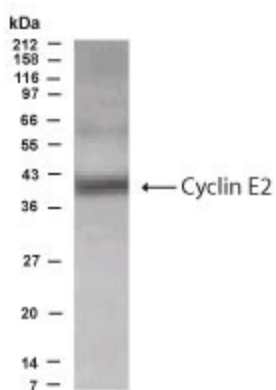
#### Product data:

Product Type:	Primary Antibodies
Applications:	WB
Recommended Dilution:	WB: 1:500 -1:1000
Reactivity:	Human
Host:	Rabbit
Clonality:	Polyclonal
Immunogen:	Partial residue sequence of Cyclin E2 protein.
Formulation:	PBS, 0.05% Sodium Azide. Store at 4C short term. Aliquot and store at -20C long term. Avoid freeze-thaw cycles.
Concentration:	lot specific
Purification:	Immunogen affinity purified
Conjugation:	Unconjugated
Storage:	Store at -20°C as received.
Stability:	Stable for 12 months from date of receipt.
Predicted Protein Size:	40 kDa
Gene Name:	cyclin E2
Database Link:	<a href="#">NP_477097</a> <a href="#">Entrez Gene 9134 Human O96020</a>
Background:	Cyclin E2 is a novel gene that encodes a protein, which is elevated in cells expressing a papilloma viral oncogene.
Synonyms:	CYCE2
Note:	Western blot: Use at 1:500 to 1:1,000 dilution. However, the investigator should determine the optimal dilution for a specific application such as immunohistochemistry.
Protein Families:	Druggable Genome
Protein Pathways:	Cell cycle, Oocyte meiosis, p53 signaling pathway, Pathways in cancer, Prostate cancer, Small cell lung cancer



[View online »](#)

## Product images:



Western Blot: Cyclin E2 Antibody TA336649 - Analysis of Cyclin E2 in CT10 cell line using this antibody at 1:500 dilution.