

Product datasheet for **TA336643**

LIMPII (SCARB2) Rabbit Polyclonal Antibody

Product data:

Product Type:	Primary Antibodies
Applications:	IF, IHC, WB
Recommended Dilution:	WB: 1:1000, IF: 1:50-1:250, IHC: 1:200, IP: 1:100
Reactivity:	Human, Mouse, Rat, Canine, Primate
Host:	Rabbit
Clonality:	Polyclonal
Immunogen:	A C-terminal synthetic peptide made to the mouse LIMPII/Igp85 protein sequence. [UniProt# O35114]
Formulation:	Tris-citrate/phosphate, pH 7, 0.1% Sodium azide. Store at 4C. Do not freeze.
Concentration:	lot specific
Purification:	Whole antisera
Conjugation:	Unconjugated
Storage:	Store at -20°C as received.
Stability:	Stable for 12 months from date of receipt.
Predicted Protein Size:	85 kDa
Gene Name:	scavenger receptor class B member 2
Database Link:	NP_005497 Entrez Gene 12492 Mouse Entrez Gene 117106 Rat Entrez Gene 950 Human Q14108



[View online »](#)

Background:

LIMP II (lysosome membrane protein 2; also called LGP85, SCARB2, CD36 antigen-like 2/CD36L2) is a member of the scavenger receptor class B member 2 family, ubiquitously expressed in higher organisms as a major lysosomal and endosomal membrane protein. LIMP II localize primarily to late endosomes/lysosomes as type III transmembrane protein, which traverses the membrane twice with the uncleaved signal peptide and a hydrophobic region near to the COOH-terminus, followed by twenty-amino acid long cytoplasmic tail of which a large portion located in lysosomal luminal side possess 10-11 N-glycosylation sites. LIMP II acts as a lysosomal receptor for glucosylceramidase (GBA) targeting and it plays a key role in regulating the biogenesis of the endosomal/lysosomal compartments (ELCs). LIMP II serves as one of the major components of the molecular machinery required for intercompartmental membrane trafficking along the endocytic pathway rather than solely serving as a structural constituent of late endosomes and lysosomes. LIMP II deficiency has been found to result in the development of an obstruction of ureteric pelvic junction, deafness and peripheral neuropathy.

Synonyms:

AMRF; CD36L2; EPM4; HLG85; LGP85; LIMP-2; LIMPII; SR-BII

Note:

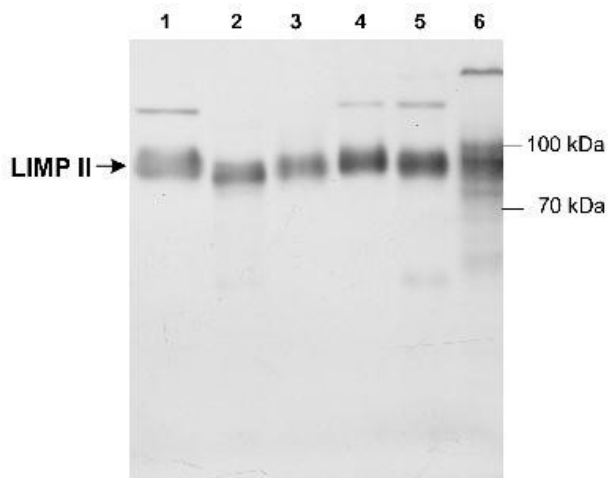
This LIMPII/lpg85 antibody is useful for Immunocytochemistry/Immunofluorescence, Immunohistochemistry, Immunoprecipitation and Western Blot, where a band is observed at ~85 kDa. Use in IHC-P was reported in scientific literature (PMID: 23863627).

Protein Families:

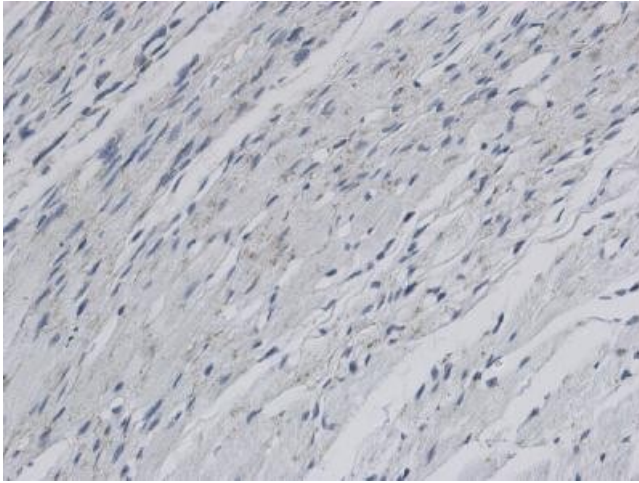
Druggable Genome, Transmembrane

Protein Pathways:

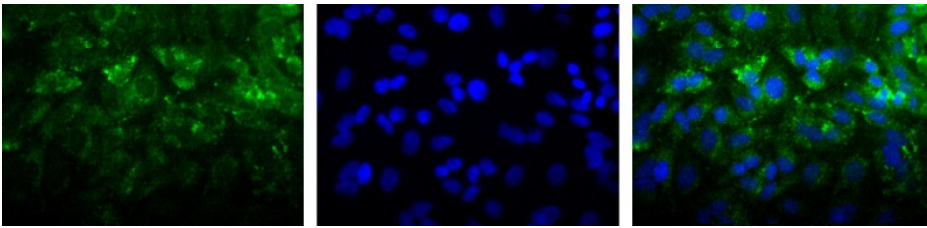
Lysosome

Product images:

Western Blot: LIMPII/lpg85 Antibody TA336643 - Detection of LIMP II (~85 kDa) in Lane 1: Rat cardiac fibroblasts (RCF), 3T3 mouse fibroblasts (2), canine lung lysate (3), RCF treated with angiotensin II (4), and H₂O₂ (5), HEPG2 human liver lysate (6).



Immunohistochemistry: LIMPII/lpg85 Antibody TA336643 - Staining of LIMP II in rat infarctzone tissue with a DAB detection system.



Immunocytochemistry/Immunofluorescence: LIMPII/lpg85 Antibody TA336643 - Detection of LIMPII/lpg85 (Green) in Hela cells using TA336643. Nuclei (Blue) are counterstained using Hoechst 33258.