

## Product datasheet for **TA336639**

### SCARB1 Rabbit Polyclonal Antibody

#### Product data:

Product Type:	Primary Antibodies
Applications:	Block/Neutralize, FC, ICC/IF, IHC, Immunoblotting, IP, Simple Western, WB
Recommended Dilution:	Flow (Intracellular), Block/Neutralize, Immunohistochemistry-Frozen, Flow Cytometry: 1:400, Immunoblotting, Knockout Validated, Simple Western: 1:100, Western Blot: 1:1000-1:5000, Immunoprecipitation: 1:10-1:500, Immunocytochemistry/ Immunofluorescence: 1:50-1:1000, Immunohistochemistry: 2.5-5 ug/ml, Immunohistochemistry-Paraffin: 2.5-5 ug/ml
Reactivity:	Human, Mouse, Rat, Bovine, Hamster, Mustelid
Host:	Rabbit
Clonality:	Polyclonal
Immunogen:	A C-terminal peptide containing residues from mouse SR-BI (within residues 450-509). [UniProt# Q61009]
Formulation:	Tris-citrate/phosphate, pH 7, 0.1% Sodium azide. Store at 4C. Do not freeze.
Concentration:	lot specific
Purification:	Immunogen affinity purified
Conjugation:	Unconjugated
Storage:	Store at -20°C as received.
Stability:	Stable for 12 months from date of receipt.
Predicted Protein Size:	82 kDa
Gene Name:	scavenger receptor class B member 1
Database Link:	<a href="#">NP_005496</a> <a href="#">Entrez Gene 20778 Mouse</a> <a href="#">Entrez Gene 25073 Rat</a> <a href="#">Entrez Gene 949 Human</a> <a href="#">Q8WTV0</a>



[View online »](#)

**Background:**

SR-BI (scavenger receptor class B member 1, SCARB1) belongs to CD36 family and act as a receptor for several ligands including phospholipids, cholesterol ester, lipoproteins, phosphatidylserine and HDL located in caveolae (regions over plasma membrane). It plays important role in meditating the uptake of HDL-derived cholesterol as well as cholesteryl ester in liver and steroidogenic tissues. It facilitates the flux of free and esterified cholesterol between cell surface and extracellular donors and acceptors, such as HDL and to a lesser extent, apoB-containing lipoproteins and modified lipoproteins. SR-BI is expressed in endothelial cells, macrophages and dendritic cells also. It has been suggested to be involved in the phagocytosis of apoptotic cells (via its phosphatidylserine binding activity); uptake of lipid soluble vitamins (vitamin E and carotenoids) and pathogen recognition, anti-inflammatory responses and its expression can be modulated by LPS as well as ROS. SR-BI has also been involved in the capture and cross-presentation of antigens from viruses, bacteria and parasites.

**Synonyms:**

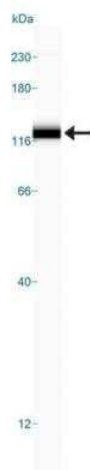
CD36L1; CLA-1; CLA1; HDLQTL6; SR-BI; SRB1

**Note:**

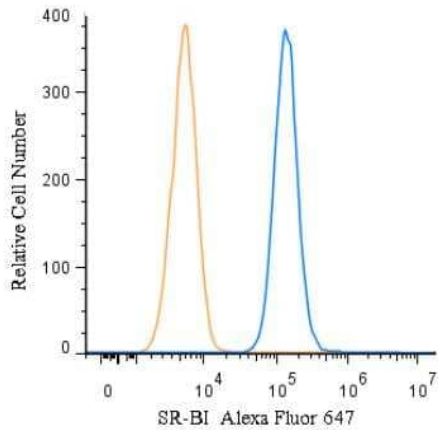
This SR-BI antibody is useful for Flow cytometry (PMID 23029167), Western blot, Immunocytochemistry/Immunofluorescence, Immunohistochemistry paraffin embedded sections and Immunoprecipitation. In Western blot a band is observed at ~ 82 kDa in tissues that express SR-BI such as liver, ovary and adrenals and to a lesser extent testis, heart and mammary gland. Blocking/Neutralizing was reported in scientific literature. Use in Immunohistochemistry-Frozen reported in scientific literature (PMID 24244566)

**Protein Families:**

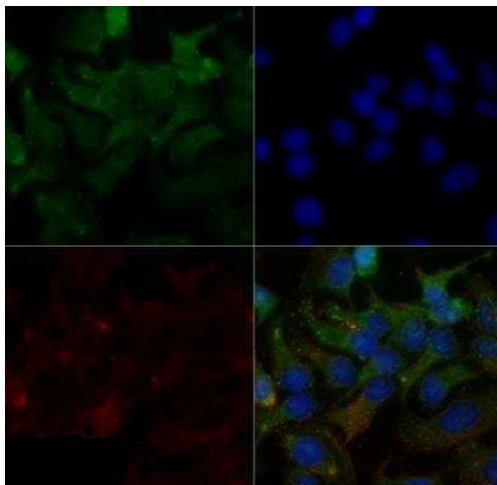
Druggable Genome, Transmembrane

**Product images:**

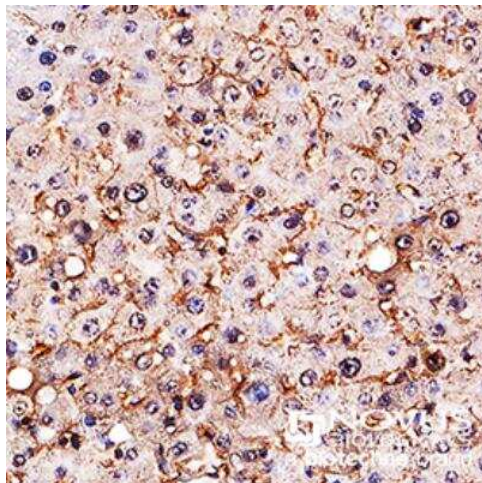
Simple Western: SR-BI Antibody TA336639 - Lane view shows a specific band for SR-BI in 0.5 mg/ml of HeLa lysate. This experiment was performed under reducing conditions using the 12-230 kDa separation system.



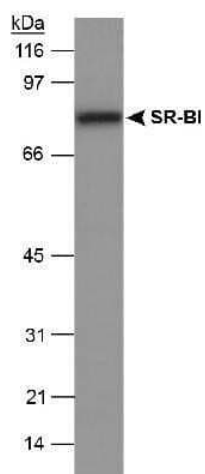
Flow (Intracellular): SR-BI Antibody TA336639 - An intracellular stain was performed on HeLa cells with TA336639AF647 (blue) and a matched isotype control (orange). Cells were fixed with 4% PFA and then permeabilized with 0.1% saponin. Cells were incubated in an antibody dilution of 2.5 ug/mL for 30 minutes at room temperature. Both antibodies were conjugated to Alexa Fluor 647.



Immunocytochemistry/Immunofluorescence: SR-BI Antibody TA336639 - HeLa cells were fixed and permeabilized for 10 minutes using -20C MeOH. The cells were incubated with anti-SR-BI at 2 ug/ml overnight at 4C and detected with an anti-rabbit DyLight 488 (Green) at a 1:500 dilution. Alpha tubulin (DM1A) NB100-690 was used as a co-stain at a 1:1000 dilution and detected with an anti-mouse DyLight 550 (Red) at a 1:500 dilution. Nuclei were counterstained with DAPI (Blue). Cells were imaged using a 40X objective.



Immunohistochemistry-Paraffin: SR-BI Antibody TA336639 - SR-BI was detected in immersion fixed paraffin-embedded sections of human liver using rabbit anti-human antibody (Catalog # TA336639) at 1:300 dilution overnight at 4C. Tissue was stained using the VisuCyte anti-rabbit HRP polymer detection reagent (Catalog # VC003) with DAB chromogen (brown) and counterstained with hematoxylin (blue). Images may not be copied, printed or otherwise disseminated without express written permission of Novus Biologicals a Bio-techne brand.



Western Blot: SR-BI Antibody TA336639 -  
Detection of SR-BI in mouse liver lysate (20 ug)  
using NB 400-101. ECL detection 5 seconds.