

## Product datasheet for **TA336634**

### GAPDH Rabbit Polyclonal Antibody

#### Product data:

Product Type:	Primary Antibodies
Applications:	WB
Recommended Dilution:	WB: 1:2000-1:10000
Reactivity:	Mouse
Host:	Rabbit
Clonality:	Polyclonal
Immunogen:	The epitope recognized by this antibody maps to a region between residues 300 and the C-terminus (residue 335) of mouse GAPDH using the numbering given in entry NP_001001303.1 (GeneID 407972).
Formulation:	Tris-citrate/phosphate, pH 7, 0.1% Sodium azide. Store at 4C. Do not freeze.
Concentration:	lot specific
Purification:	Immunogen affinity purified
Conjugation:	Unconjugated
Storage:	Store at -20°C as received.
Stability:	Stable for 12 months from date of receipt.
Predicted Protein Size:	38 kDa
Gene Name:	glyceraldehyde-3-phosphate dehydrogenase
Database Link:	<a href="#">NP_002037</a> <a href="#">Entrez Gene 14433 Mouse</a> <a href="#">P04406</a>



[View online »](#)

**Background:**

GAPDH (glyceraldehyde-3-phosphate dehydrogenase or GAPD) is a key enzyme in glycolytic pathway, wherein it catalyzes the first step by converting D-glyceraldehyde 3-phosphate (G3P) into 3-phospho-D-glyceroyl phosphate. It localizes mainly in the cytoplasm from where it translocates to nucleus following S-nitrosylation and interaction with SIAH1. Nuclear GAPDH implicates in transcription, RNA transport, DNA replication and apoptosis, via its nitrosylase activity which mediates cysteine S-nitrosylation of nuclear target proteins such as SIRT1, HDAC2, PRKDC etc. GAPDH also regulates the organization/assembly of cytoskeleton and facilitates CHP1-dependent microtubule - membrane associations. It is a component of GAIT (gamma interferon-activated inhibitor of translation) complex which mediates IFN-gamma-induced transcript-selective translation inhibition in inflammation. Because of its expression as housekeeping protein in most cell types, GAPDH is often used as a control molecule in various genes expression studies, however, recent evidence has shown the association of its altered expression with neurodegenerative pathologies such as Huntington disease, Alzheimer's disease etc., and elevated GAPDH mRNA/protein expression levels have been seen in pancreatic, lung and prostate cancers.

**Synonyms:**

G3PD; GAPD; HEL-S-162eP

**Note:**

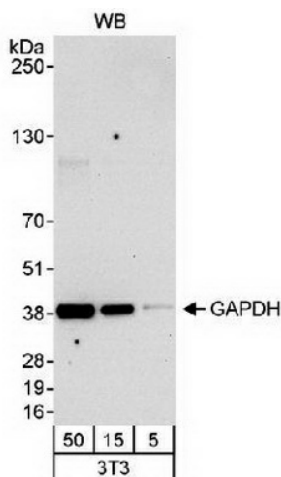
This GAPDH antibody is useful for Western blot, where a band is observed ~36 kDa. The antibody does not work in Immunoprecipitation.

**Protein Families:**

ES Cell Differentiation/IPS

**Protein Pathways:**

Alzheimer's disease, Glycolysis / Gluconeogenesis, Metabolic pathways

**Product images:**

Western Blot: GAPDH Antibody TA336634 - Detection of Mouse GAPDH Whole cell lysate (5, 15 and 50 ug) from mouse NIH3T3 cells. Affinity purified rabbit anti-GAPDH antibody used at 0.04 ug/ml