

Product datasheet for **TA336627**

Fibrillarin (FBL) Mouse Monoclonal Antibody [Clone ID: 38F3]

Product data:

| | |
|-------------------------|--|
| Product Type: | Primary Antibodies |
| Clone Name: | 38F3 |
| Applications: | FC, IF, IHC, WB |
| Recommended Dilution: | WB: 1:1000-1:5000, FC: 1:20-1:400, IF: 1:500-1:1000, IHC: 1:500-1:1000, IHC-F: 1:500-1:1000, IHC-P: 1:500-1:1000 |
| Reactivity: | Human, Mouse, Rat, Chicken, Drosophila, C. elegans |
| Host: | Mouse |
| Isotype: | IgG1 |
| Clonality: | Monoclonal |
| Immunogen: | Yeast nuclear preparation (<i>S. cerevisiae</i>). |
| Formulation: | Preservative: 0.1% Sodium Azide. Store at 4C short term. Aliquot and store at -20C long term. Avoid freeze-thaw cycles. |
| Concentration: | lot specific |
| Purification: | Tissue culture supernatant |
| Conjugation: | Unconjugated |
| Storage: | Store at -20°C as received. |
| Stability: | Stable for 12 months from date of receipt. |
| Predicted Protein Size: | 34 kDa |
| Gene Name: | fibrillarin |
| Database Link: | NP_001427 Entrez Gene 14113 Mouse Entrez Gene 292747 Rat Entrez Gene 2091 Human P22087 |



[View online »](#)

Background:

Fibrillarin / Nop1p, was originally identified as a nucleolar protein of baker's yeast, *Saccharomyces cerevisiae* (accession P15646). The Nop1p protein is essential for yeast viability and is localized in the nucleoli. The human homologue of Nop1p is Fibrillarin (accession P22087), a component of the nucleolar small nuclear ribonucleoprotein (snRNP) particle. The human Fibrillarin gene is located on chromosome 19 (19q13.1). Fibrillarin proteins have been cloned and sequenced from several other species (mouse, accession P35550, *Xenopus* accession P22232, *C. elegans* accession Q22053, and *S. pombe* accession P35551). The N terminal 80 amino acids contain multiple copies based on the peptide RGG, and the remaining 240 amino acids consist of the Fibrillarin domain. A Fibrillarin homologue has also been identified in the genome of the archaean *Methanococcus* (accession NC_000909). This protein lacks the RGG rich N-terminal extension but is clearly homologous to the other sequences throughout the entire Fibrillarin domain. The structure of this molecule has been determined and shown to consist of 2 extended beta-sheets flanked by 4 alpha-helices. Patients with the autoimmune disease scleroderma often have strong circulating autoantibodies to a 34kDa protein which was subsequently found to be Fibrillarin. Fibrillarin is an excellent marker for the nucleolus.

Synonyms:

FIB; FLRN; RNU3IP1

Note: This Fibrillarin Antibody (38F3) is useful for Western blot, Immunocytochemistry/Immunofluorescence, Flow Cytometry and Immunohistochemistry on both paraffin-embedded and frozen sections. In WB a band can be seen at approximately 34 kDa. In ICC/IF, this antibody shows prominent specular nucleolar staining. Use in Immunohistochemistry whole mount reported in scientific literature (PMID 24722283)

Protein Families:

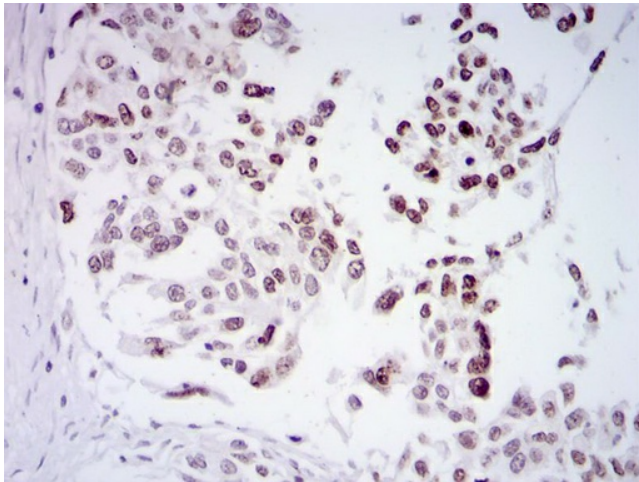
Stem cell - Pluripotency

Product images:

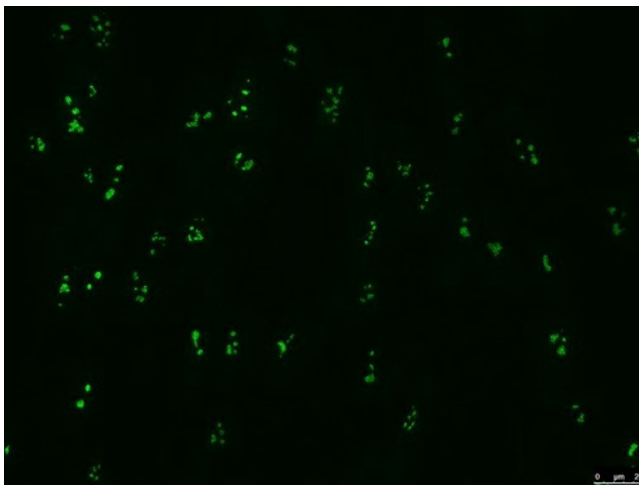
38F3
(34.5)



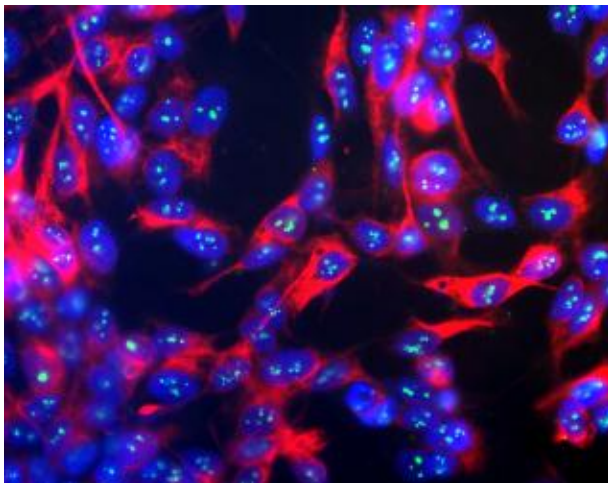
Western Blot: Fibrillarin Antibody (38F3)
TA336627 - Western blot analysis of Fibrillarin
expression on yeast protein extracts using
TA336627.



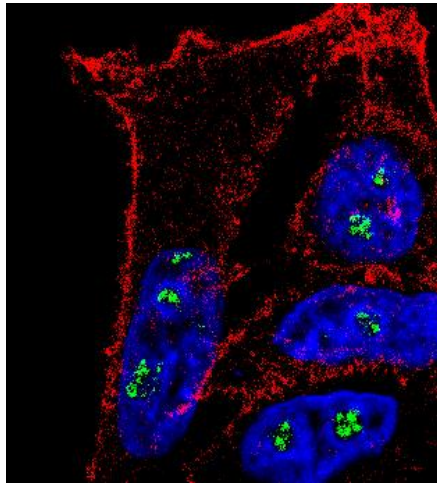
Immunohistochemistry-Paraffin: Fibrillarin Antibody (38F3) TA336627 - IHC staining of Fibrillarin in human ovarian cancer using DAB with hematoxylin counterstain.



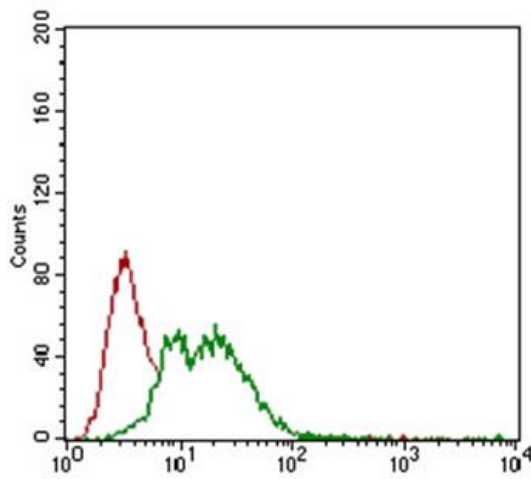
Immunocytochemistry/Immunofluorescence: Fibrillarin Antibody (38F3) TA336627 - Fibrillarin immunofluorescence in fibroblasts. Image from verified customer review.



Immunocytochemistry/Immunofluorescence: Fibrillarin Antibody (38F3) TA336627 - Human SH-SY5Y cells stained with TA336627, showing prominent specular nucleolar staining. The nuclei are counter stained with DAPI (blue), so these spots appear very pale blue.



Immunocytochemistry/Immunofluorescence: Fibrillarin Antibody (38F3) TA336627 - IF Confocal analysis of MCF7 cells using Fibrillarin antibody (TA336627, 1:5). An Alexa Fluor 488-conjugated Goat to mouse IgG was used as secondary antibody (green). Actin f



Flow Cytometry: Fibrillarin Antibody (38F3) TA336627 - Fibrillarin antibody was tested at 1:400 in HEK293 cells using an Alexa Fluor 488 secondary (shown in green) alongside unstained cells (shown in red).