

Product datasheet for **TA336624**

PEN2 (PSENEN) Rabbit Polyclonal Antibody

Product data:

Product Type:	Primary Antibodies
Applications:	IP, WB
Recommended Dilution:	Immunoprecipitation: 1:50-1:100, Western Blot: 1:1000-1:2500
Reactivity:	Human, Mouse
Host:	Rabbit
Clonality:	Polyclonal
Immunogen:	A synthetic peptide corresponding to the C-terminus of human PEN2 (within residues 50-101). [UniProt# Q9NZ42]
Formulation:	Aliquot and store at -20C or -80C. Avoid freeze-thaw cycles.
Concentration:	lot specific
Purification:	Whole antisera
Conjugation:	Unconjugated
Storage:	Store at -20°C as received.
Stability:	Stable for 12 months from date of receipt.
Predicted Protein Size:	12 kDa
Gene Name:	presenilin enhancer gamma-secretase subunit
Database Link:	NP_758844 Entrez Gene 66340 Mouse Entrez Gene 55851 Human Q9NZ42



[View online »](#)

Background:

PEN2 (gamma-secretase subunit PEN-2 or presenilin enhancer protein 2) is an essential subunit of the gamma-secretase complex which is an endoprotease complex responsible for catalyzing the intramembrane cleavage of integral membrane proteins such as Notch receptors and APP (beta-amyloid precursor protein). Gamma-secretase complex is composed of a presenilin homodimer (PSEN1 or PSEN2), nicastrin (NCSTN), APH1 (APH1A or APH1B) and PSENEN/PEN2. PEN2 represents the last step of maturation of gamma-secretase, facilitating endoproteolysis of presenilin and conferring gamma-secretase activity. PEN2 is a multi-pass membrane protein predominantly localized in the endoplasmic reticulum and in the Golgi stack membrane/cis-Golgi. Defects in PEN2 have been linked to familial acne inversa type 2 (ACNINV2), a chronic relapsing inflammatory disease of the hair follicles which is primarily characterized by recurrent draining sinuses, painful skin abscesses, and disfiguring scars.

Synonyms:

MDS033; MSTP064; PEN-2; PEN2

Note:

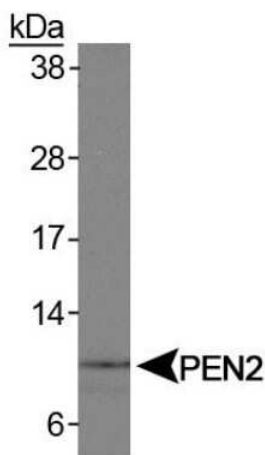
This PEN2 antibody is useful for Immunoprecipitation and Western blot, where a band can be seen at approximately 12 kDa. This antibody has primarily been tested in HA-PEN2 transfected cells combining Immunoprecipitation with Western blot analysis (ECL). For endogenous sample testing, it is suggested that the investigator load a greater amount of protein on the gel and to combine Immunoprecipitation with Western blot analysis.

Protein Families:

Druggable Genome, Transmembrane

Protein Pathways:

Alzheimer's disease, Notch signaling pathway

Product images:


Western Blot: PEN2 Antibody TA336624 - Analysis of PEN2 on human placenta.