

Product datasheet for **TA336619**

NFH (NEFH) Chicken Polyclonal Antibody

Product data:

Product Type:	Primary Antibodies
Applications:	IF, WB
Recommended Dilution:	WB: 1:5000-1:10000, IF: 1:1000-1:10000, IHC: 1:1000-1:10000, IHC-F: 1:1000-1:10000, IHC-P: 1:1000-1:10000
Reactivity:	Human, Mouse, Rat, Bovine, Feline, Porcine
Host:	Chicken
Isotype:	IgY
Clonality:	Polyclonal
Immunogen:	Neurofilament Heavy protein purified from bovine spinal cord
Formulation:	PBS, 0.03% Sodium Azide. Store at 4C short term. Aliquot and store at -20C long term. Avoid freeze-thaw cycles.
Concentration:	lot specific
Purification:	Ammonium sulfate precipitation
Conjugation:	Unconjugated
Storage:	Store at -20°C as received.
Stability:	Stable for 12 months from date of receipt.
Predicted Protein Size:	210 kDa
Gene Name:	neurofilament, heavy polypeptide
Database Link:	NP_066554 Entrez Gene 24587 Rat Entrez Gene 380684 Mouse Entrez Gene 4744 Human P12036



[View online »](#)

Background:

Neurofilaments can be defined as the intermediate or 10nm filaments found specifically in neuronal cells. Neurofilaments appears as fibres of indeterminate length which generally have fine wispy protrusions from their sides. They are found abundantly in axons of large projection neurons. They probably function to provide structural support for neurons and their synapses and to support the large axon diameters required for rapid axon impulse conduction. They are composed of a mixture of subunits which usually include the three neurofilament triplet proteins, known as Neurofilament Light (NF-L), Neurofilament Medium (NF-M) and Neurofilament Heavy (NF-H). Neurofilaments may also include smaller amounts of peripherin, a-internexin, nestin and in some cases vimentin. Antibodies to the various neurofilament subunits are very useful cell type markers since the proteins are among the most abundant of the nervous system, are expressed only in neurons, and are biochemically very stable.

Synonyms:

NFH

Note:

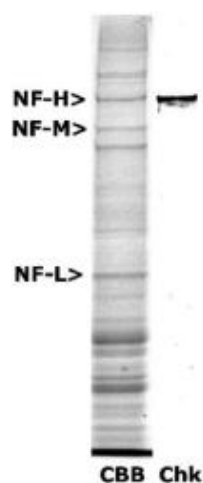
This 200kDa Neurofilament Heavy Antibody is useful for Western blot, Immunocytochemistry/Immunofluorescence, and Immunohistochemistry on both paraffin-embedded and frozen sections. In Western blot a band can be seen at around 200kDa corresponding to rodent Neurofilament Heavy. In larger species such as porcine or human, Neurofilament Heavy runs a little slower and can be seen around 210-220kDa.

Protein Families:

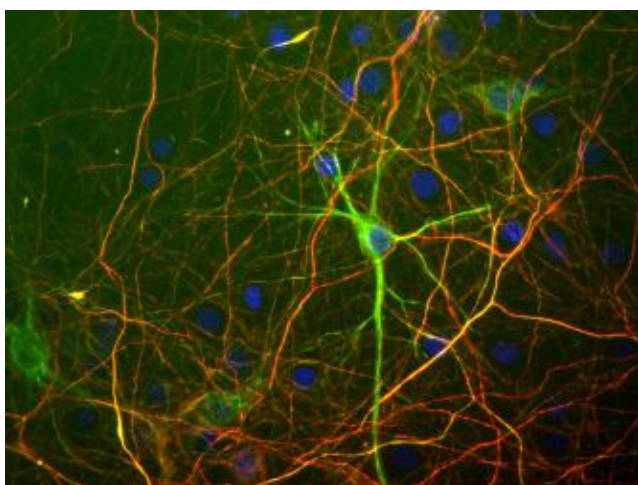
Druggable Genome

Protein Pathways:

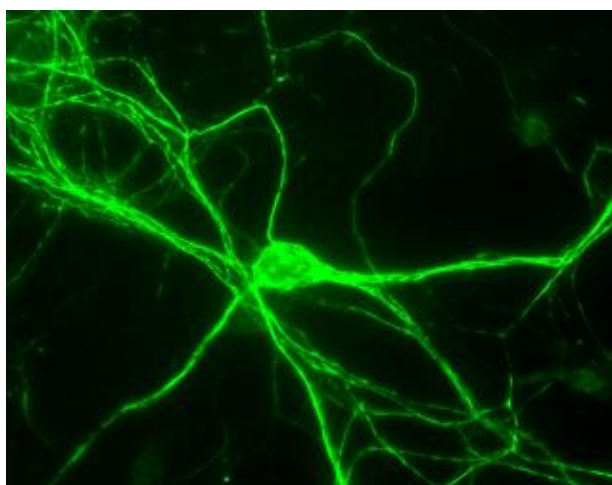
Amyotrophic lateral sclerosis (ALS)

Product images:


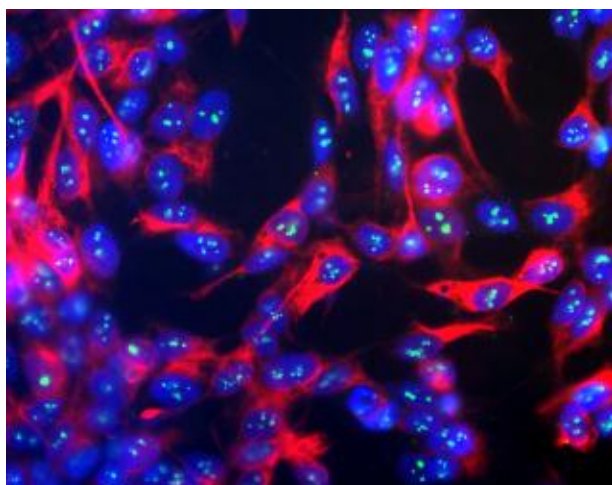
Western Blot: 200kDa Neurofilament Heavy Antibody TA336619 - Western blot analysis of 200kDa Neurofilament Heavy expression in rat spinal cord extract. The first lane is Coomassie Brilliant Blue stained and the second lane is probed with chicken anti-N



Immunocytochemistry/Immunofluorescence:
200kDa Neurofilament Heavy Antibody TA336619
- Mixed rat neuron/glial cultures stained with
Neurofilament Light (NF-L) antibody NBP1-05217
[green] and Neurofilament Heavy (NF-H) antibody
TA336619 [red]. Blue is a



Immunocytochemistry/Immunofluorescence:
200kDa Neurofilament Heavy Antibody TA336619
- Rat neurons stained with 200kDa
Neurofilament Heavy Antibody TA336619.



Immunocytochemistry/Immunofluorescence:
200kDa Neurofilament Heavy Antibody TA336619
- SH-SY5Y cells stained with 200kDa
Neurofilament Heavy Antibody TA336619 (red)
and Fibrillarin Antibody NB300-269 (green).
Nuclear DNA is stained with Hoechst dye (blue)