

Name: Chicken Polyclonal MAP2 Antibody
Product Data Sheet - ANTIBODY**Catalog: TA336617**

Components:	• Chicken Polyclonal MAP2 Antibody (TA336617)
Amount:	0.05ml
Immunogen:	Purified MAP2 isolated from bovine brain.
Host:	Chicken
Isotype:	IgY
Species Reactivity:	Human, Mouse, Rat, Bovine
Guaranteed Applications:	WB, IF
Suggested Dilutions:	WB: 1:10000-1:20000, IF: 1:5000-1:10000, IHC: 1:1000-1:5000, IHC-F: 1:1000-1:5000,
Concentration:	Please see the vial label for concentration. If unlisted please contact technical services.
Buffer:	PBS, 0.03% Sodium Azide. Store at 4C short term. Aliquot and store at -20C long term. Avoid freeze-thaw cycles.
Purification:	Ammonium sulfate precipitation
Storage Condition:	Shipped at -20C or with ice packs. Upon delivery store at -20C. Dilute in PBS (pH7.3) if necessary. Stable for 12 months from date of receipt. Avoid repeated freeze-thaws.

Target

Target Name:	microtubule associated protein 2
Alternative Name:	MAP2A MAP2B MAP2C
Database Link:	NP_114033 Entrez Gene 4133 Human Entrez Gene 17756 Mouse Entrez Gene 25595 Rat Entrez Gene 0 Monkey Entrez Gene 0 Dog
Function:	MAP2 belongs to a family of proteins known as the microtubule associated proteins (MAPs). MAP2 is made up of two ~280kDa apparent molecular weight bands referred to as MAP2a and MAP2b. A third lower molecular weight form, usually called MAP2c, corresponds to a pair of protein bands running at ~70kDa on SDS-PAGE gels. Antibodies to MAP2 are excellent markers on neuronal cells, their perikarya

This product is to be used for laboratory only. Not for diagnostic or therapeutic use.

and neuronal dendrites. Dendrite specific MAP is found specifically in the dendritic branching of neurons.

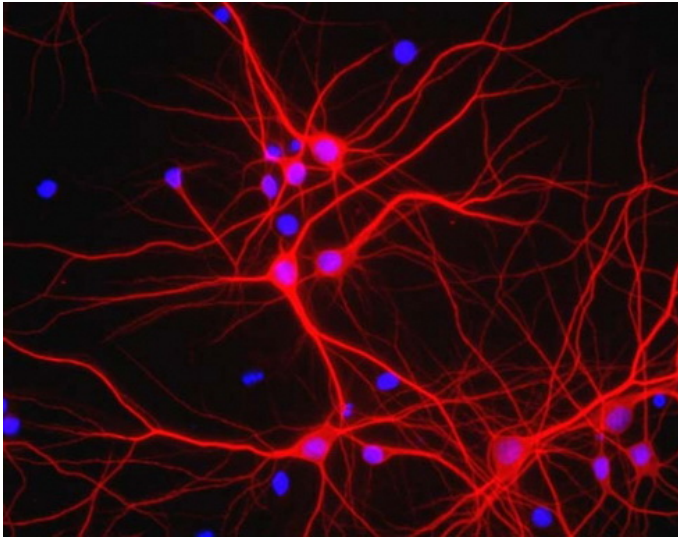
This product is to be used for laboratory only. Not for diagnostic or therapeutic use.

© 2017 OriGene Technologies, Inc. 9620 Medical Center Dr., Suite 200, Rockville, MD 20850

Validation Data



Western Blot: MAP2 Antibody [TA336617] - Western blot analysis of MAP2 expression in bovine brain extract using TA336617.



Immunocytochemistry/Immunofluorescence: MAP2 Antibody [TA336617] - Mixed neuron/glia cultures stained with TA336617 (red). The perikarya and dendrites of neurons are strongly and specifically stained with the MAP2 antibody, while the axons of the neuron

* More validation images may be available on our website: <http://www.origene.com/antibody/TA336617.aspx>

This product is to be used for laboratory only. Not for diagnostic or therapeutic use.

© 2017 OriGene Technologies, Inc. 9620 Medical Center Dr., Suite 200, Rockville, MD 20850
