

## Product datasheet for **TA336616**

### GABA B Receptor 1 (GABBR1) Rabbit Polyclonal Antibody

#### Product data:

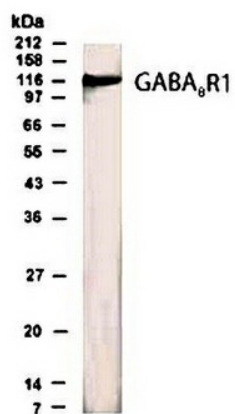
Product Type:	Primary Antibodies
Applications:	WB
Recommended Dilution:	WB: 1:500 (ECL)
Reactivity:	Human
Host:	Rabbit
Clonality:	Polyclonal
Immunogen:	Synthetic peptide corresponding to residues 33-54 [PHLPRPHPRVPPHPSSERRAVY] of the GABABR1 subunit.
Formulation:	PBS, 0.02% Sodium Azide. Store at 4C short term. Aliquot and store at -20C long term. Avoid freeze-thaw cycles.
Concentration:	lot specific
Purification:	Immunogen affinity purified
Conjugation:	Unconjugated
Storage:	Store at -20°C as received.
Stability:	Stable for 12 months from date of receipt.
Predicted Protein Size:	116 kDa
Gene Name:	gamma-aminobutyric acid type B receptor subunit 1
Database Link:	<a href="#">NP_068704</a> <a href="#">Entrez Gene 2550 Human</a> <a href="#">Q9UBS5</a>
Background:	The inhibitory neurotransmitter, GABA, acts through two ligand-gated channels, GABA A and GABA C receptors and GABA B, the latter of which acts through a G protein mechanism. GABA BR1 is one of two G-protein coupled receptors for GABA <sub>B</sub> that acts as a heteromeric assembly with GABA BR2.
Synonyms:	GABABR1; GABBR1-3; GB1; GPRC3A
Note:	By Western Blot a 108kDa band is predicted.
Protein Families:	Druggable Genome, GPCR, Secreted Protein, Transmembrane



[View online »](#)

Protein Pathways: Neuroactive ligand-receptor interaction

### Product images:



Western Blot: GABA B Receptor 1 Antibody TA336616 - WB detection of GABA B Receptor 1 / GABA beta receptor 1 in brain lysate with antibody TA336616 at a dilution of 1:500.