

## Product datasheet for **TA336615**

### GABA B Receptor 2 (GABBR2) Rabbit Polyclonal Antibody

#### Product data:

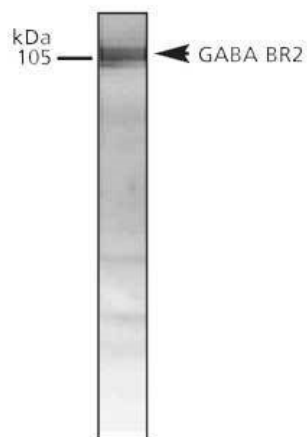
Product Type:	Primary Antibodies
Applications:	WB
Recommended Dilution:	WB: 1:500 (ECL)
Reactivity:	Human
Host:	Rabbit
Clonality:	Polyclonal
Immunogen:	Synthetic peptide made to the 105 kDa GABA <sub>B</sub> R2 protein.
Formulation:	PBS, 0.02% Sodium Azide. Store at 4C short term. Aliquot and store at -20C long term. Avoid freeze-thaw cycles.
Concentration:	lot specific
Purification:	Immunogen affinity purified
Conjugation:	Unconjugated
Storage:	Store at -20°C as received.
Stability:	Stable for 12 months from date of receipt.
Predicted Protein Size:	105 kDa
Gene Name:	gamma-aminobutyric acid type B receptor subunit 2
Database Link:	<a href="#">NP_005449</a> <a href="#">Entrez Gene 9568 Human</a> <a href="#">O75899</a>
Background:	The inhibitory neurotransmitter, GABA, acts through two ligand-gated channels, GABA A and GABA C receptors and GABA B, the latter of which acts through a G protein mechanism. GABA BR1 is one of two G-protein coupled receptors for GABA B that acts as a heteromeric assembly with GABA BR2.
Synonyms:	GABABR2; GPR51; GPRC3B; HG20; HRIHFB2099
Note:	This antibody can be used in western blot, where a band is seen around 105 kDa representing GABA BR2.
Protein Families:	Druggable Genome, GPCR, Transmembrane



[View online »](#)

Protein Pathways: Neuroactive ligand-receptor interaction

### Product images:



Western Blot: GABA B Receptor 2 Antibody TA336615 - Western Blot analysis of GABA BR2 in brain lysate, using TA336615.