

Product datasheet for **TA336614**

GABARAP Rabbit Polyclonal Antibody

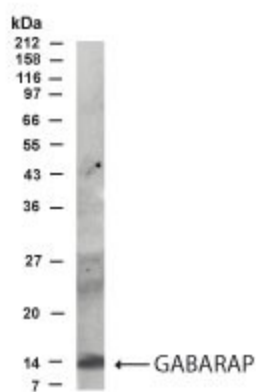
Product data:

Product Type:	Primary Antibodies
Applications:	WB
Recommended Dilution:	WB: 1:500-1:1000
Reactivity:	Human, Rat
Host:	Rabbit
Clonality:	Polyclonal
Immunogen:	N-terminus of GABA _A Receptor Associated Protein (Proprietary)
Formulation:	PBS, 0.02% Sodium Azide. Store at 4C short term. Aliquot and store at -20C long term. Avoid freeze-thaw cycles.
Concentration:	lot specific
Purification:	Immunogen affinity purified
Conjugation:	Unconjugated
Storage:	Store at -20°C as received.
Stability:	Stable for 12 months from date of receipt.
Predicted Protein Size:	14 kDa
Gene Name:	GABA type A receptor-associated protein
Database Link:	NP_009209 Entrez Gene 58974 Rat Entrez Gene 11337 Human O95166
Background:	GABA _A Receptor Associated Protein (GABARAP) interacts with the gamma2 subunit of GABA _A receptors.
Synonyms:	ATG8A; GABARAP-a; MM46
Note:	For Western Blotting, use at a dilution of 1:500 to 1:1,000 (ECL)
Protein Families:	Druggable Genome
Protein Pathways:	Regulation of autophagy



[View online »](#)

Product images:



Western Blot: GABARAP Antibody TA336614 - Analysis of GABARAP in brain lysate using this antibody at 1:500 dilution.