

Product datasheet for **TA336613**

Neurofibromin (NF1) Rabbit Polyclonal Antibody

Product data:

Product Type:	Primary Antibodies
Applications:	ICC/IF, IHC, WB
Recommended Dilution:	Immunocytochemistry/ Immunofluorescence, Immunohistochemistry-Paraffin: 1:200-1:500, Immunohistochemistry-Frozen: 1:200-1:500, Immunohistochemistry: 1:200-1:500, Western Blot: 1:500-1:2000
Reactivity:	Human, Mouse, Rat
Host:	Rabbit
Clonality:	Polyclonal
Immunogen:	An N-terminal peptide of Neurofibromin 1 (within amino acids 1-50). [UniProt# P21359]
Formulation:	Store at 4C short term. Aliquot and store at -20C long term. Avoid freeze-thaw cycles.
Concentration:	lot specific
Purification:	Whole antisera
Conjugation:	Unconjugated
Storage:	Store at -20°C as received.
Stability:	Stable for 12 months from date of receipt.
Gene Name:	neurofibromin 1
Database Link:	NP_001121619 Entrez Gene 18015 Mouse Entrez Gene 24592 Rat Entrez Gene 4763 Human P21359

Background: Neurofibromin 1 (NF1), the Nf1 gene product, is a large protein which contains a central Ras-GTPase-activating (RasGAP) domain and is suggested to function as a negative regulator of proto-oncogene RAS and downstream effectors. It stimulates the GTPase activity of RAS and acts as regulator of RAS signaling. Consistent with its biochemical activity, NF1 functions as a tumor-suppressor gene in juvenile myelomonocytic leukemia (JMML), and diseased BM cells exhibit aberrant Raf/MEK/ERK signaling. Moreover, NF1 shows greater affinity for Ras GAP, but lower specific activity. Besides JMML, defects in NF1 have also been linked to neurofibromatosis type 1 (NF1), Watson syndrome (WS), familial spinal neurofibromatosis (FSNF), neurofibromatosis-Noonan syndrome (NFNS), colorectal cancer (CRC).



[View online »](#)

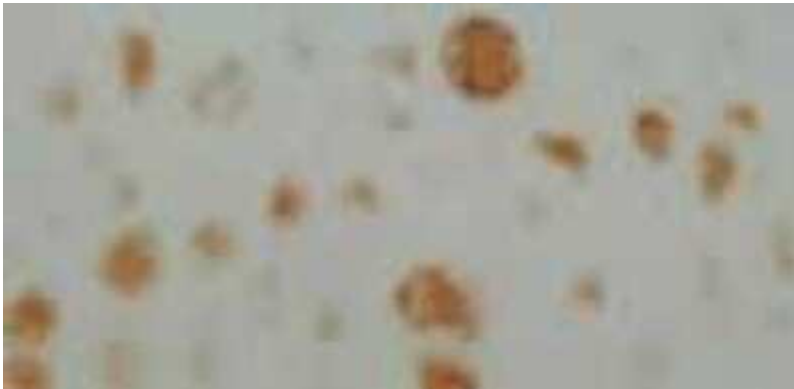
Synonyms: NFNS; VRNF; WSS

Note: This Neurofibromin 1 antibody can be used for Western blot and Immunohistochemistry of frozen and paraffin-embedded sections. In WB, a band-set at 220-240 kDa and a higher MW band at 450 kDa (uncharacterized) can be seen. For IHC, antigen retrieval is not required for immunostaining of frozen sections. Antigen retrieval with trypsin or citrate improves immunostaining of paraffin sections. Use in Immunocytochemistry/immunofluorescence reported in scientific literature (PMID: 23910086)

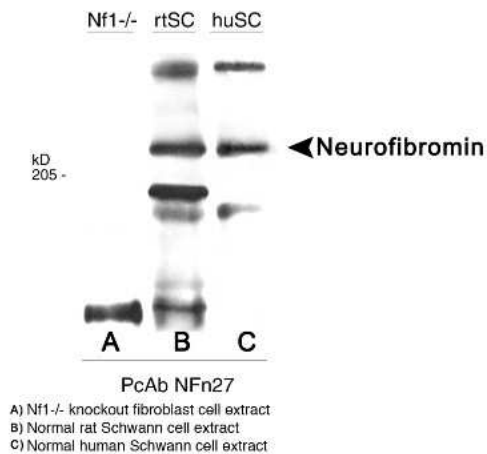
Protein Families: Druggable Genome

Protein Pathways: MAPK signaling pathway

Product images:



Immunohistochemistry: Neurofibromin 1 Antibody TA336613 - NF1 protein labeling displays positive signal in the maturing and the hypertrophic cartilages but only faint labeling in the proliferative cartilage.



Western Blot: Neurofibromin 1 Antibody TA336613 - Western Blot of (A, B, C above).