

## Product datasheet for **TA336611**

### GFAP Rabbit Polyclonal Antibody

#### Product data:

Product Type:	Primary Antibodies
Applications:	IF, WB
Recommended Dilution:	WB: 1:50000, IF: 1:1000-1:5000, IHC: 1:1000-1:5000, IHC-F: 1:1000, IHC-P: 1:1000-1:5000
Reactivity:	Human, Mouse, Rat, Bovine, Canine, Chicken, Feline
Host:	Rabbit
Clonality:	Polyclonal
Immunogen:	GFAP purified from bovine spinal cord. [UniProt# Q28115]
Formulation:	Store at 4C short term. Aliquot and store at -20C long term. Avoid freeze-thaw cycles.
Concentration:	lot specific
Purification:	Whole antisera
Conjugation:	Unconjugated
Storage:	Store at -20°C as received.
Stability:	Stable for 12 months from date of receipt.
Predicted Protein Size:	55 kDa
Gene Name:	glial fibrillary acidic protein
Database Link:	<a href="#">NP_002046</a> <a href="#">Entrez Gene 14580 Mouse</a> <a href="#">Entrez Gene 24387 Rat</a> <a href="#">Entrez Gene 2670 Human</a> <a href="#">P14136</a>
Background:	GFAP (Glial Fibrillary Acidic Protein) is a member of the class III intermediate filament protein family. It is heavily and specifically expressed in astrocytes and certain other astroglia in the central nervous system, in satellite cells, in peripheral ganglia and in non-myelinating Schwann cells in peripheral nerves. In addition neural stem cells frequently strongly express GFAP. Antibodies to GFAP are therefore very useful as markers of astrocytic cells. In addition many types of brain tumors, presumably derived from astrocytic cells, heavily express GFAP.
Synonyms:	ALXDRD



[View online »](#)

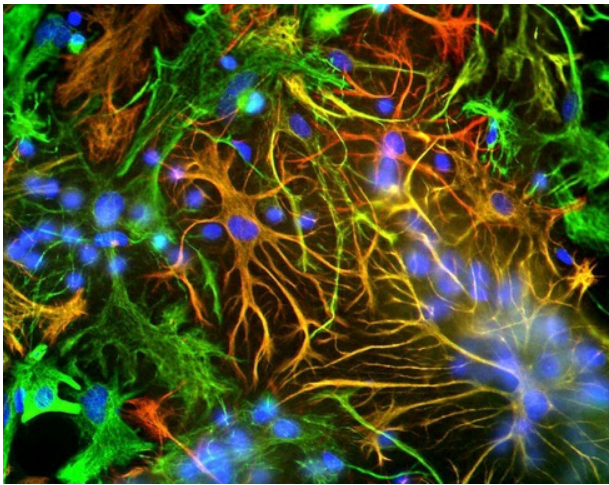
**Note:** This GFAP Antibody is useful for Western blot, Immunocytochemistry/Immunofluorescence, and Immunohistochemistry on both paraffin-embedded and frozen sections. In Western blot a band can be seen at 50-55 kDa representing GFAP. A lower band may be seen around 45 kDa representing a proteolytic fragment derived from the GFAP molecule.

**Protein Families:** ES Cell Differentiation/IPS

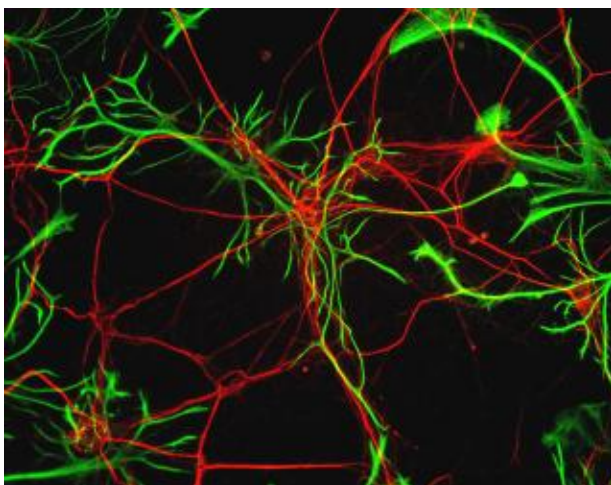
**Product images:**



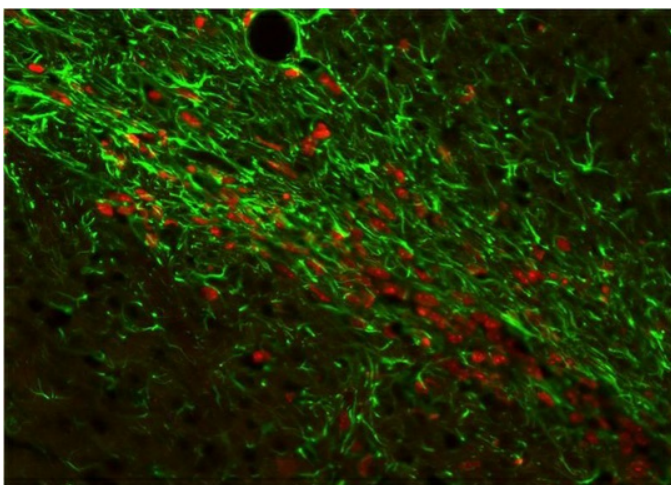
Western Blot: GFAP Antibody TA336611 - Western blot analysis of GFAP expression in whole rat cerebellum homogenate using TA336611.



Immunocytochemistry/Immunofluorescence: GFAP Antibody TA336611 - Mixed neuron-glia cultures stained with GFAP antibody TA336611 (red) and Vimentin antibody NB300-223 (green). The fibroblastic cells contain only Vimentin and so are green. The astrocyte



Immunocytochemistry/Immunofluorescence:  
GFAP Antibody TA336611 - Rat neurons stained  
with Neurofilament Heavy antibody NB300-217  
(red) and GFAP antibody TA336611 (green).



Immunocytochemistry/Immunofluorescence:  
GFAP Antibody TA336611 - Xenografted mouse  
brain section : astocyte and human nuclei. Image  
from a confirmed customer review.