

## Product datasheet for **TA336607**

### Peripherin (PRPH) Rabbit Polyclonal Antibody

#### Product data:

Product Type:	Primary Antibodies
Applications:	WB
Recommended Dilution:	WB: 1:5000, ELISA: 1:100-1:2000, IF: 1:1000, IHC: 1:500, IHC-F: , IHC-P:
Reactivity:	Human, Mouse, Rat, Mammalian
Host:	Rabbit
Clonality:	Polyclonal
Immunogen:	Recombinant full length rat Peripherin [UniProt# P21807]
Formulation:	Store at 4C short term. Aliquot and store at -20C long term. Avoid freeze-thaw cycles.
Concentration:	lot specific
Purification:	Whole antisera
Conjugation:	Unconjugated
Storage:	Store at -20°C as received.
Stability:	Stable for 12 months from date of receipt.
Predicted Protein Size:	57 kDa
Gene Name:	peripherin
Database Link:	<a href="#">NP_006253</a> <a href="#">Entrez Gene 19132 Mouse</a> <a href="#">Entrez Gene 24688 Rat</a> <a href="#">Entrez Gene 5630 Human</a> <a href="#">P41219</a>



[View online »](#)

**Background:**

Peripherin (PRPH) is a 57kD type III neuronal intermediate filament (NIF) protein which is predominantly expressed in neurons of PNS and in certain CNS neurons specifically from brain stem/spinal cord which generally project toward peripheral structures. Inside developing neurons, PRPH is expressed abundantly in the growth cones and is required for axonal outgrowth as well as maintenance or regeneration. In mature neurons, together with other NIFs, PRPH constitutes a shape-maintaining IF network. Besides its crucial role in development of nervous system, PRPH can also be highly relevant to pathogenesis of neurodegenerative disorder. PRPH expression is induced in CNS neurons (wherein it is not expressed normally) upon brain injury, and factors such as LIF, IL-6 etc and PRPH molecules form aggregates in neurons. Synaptic plasticity is markedly altered in PRPH transgenic mice (Per mice) and up-regulation of PRPH expression is implicated in some pathophysiological conditions, such as cerebral ischemia and seizure, and some cognitive disorders. In ALS patients, PRPH together with neuronal IFs are detected in the majority of abnormal IF inclusion bodies in mature or aging motor neurons.

**Synonyms:**

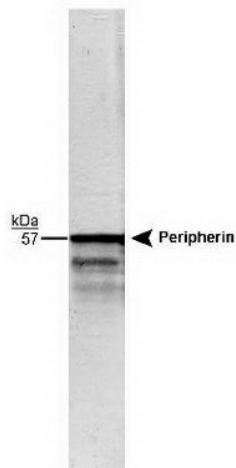
NEF4; PRPH1

**Note:**

This Peripherin antibody can be used for ELISA, Immunocytochemistry/Immunofluorescence and Western blotting. In WB a band can be seen at ~57 kDa. Success in IHC on mouse tissue has been reported in a customer review. Use in Immunohistochemistry-Paraffin reported in scientific literature (PMID 16325747) Use in Immunohistochemistry-frozen reported in scientific literature (PMID 24277578)

**Protein Pathways:**

Amyotrophic lateral sclerosis (ALS)

**Product images:**

Western Blot: Peripherin Antibody TA336607  
Detection of the 57 kDa peripherin protein in whole rat brain stem homogenate using NB 300-137 (1:20,000). The faint 48 kDa band is a peripherin molecule.