

Product datasheet for **TA336603**

Neurofilament (NEFM) Rabbit Polyclonal Antibody

Product data:

Product Type:	Primary Antibodies
Applications:	IF, WB
Recommended Dilution:	WB: 1:5000-1:10000, IF: 1:500-1:1000, IHC: 1:1000-1:5000, IHC-F: 1:1000-1:5000, IHC-P: 1:1000-1:5000
Reactivity:	Human, Mouse, Rat, Bovine, Feline, Porcine, Avian
Host:	Rabbit
Clonality:	Polyclonal
Immunogen:	Recombinant rat Neurofilament Medium fusion protein corresponding to the C-terminus [UniProt# P12839]
Formulation:	Store at 4C short term. Aliquot and store at -20C long term. Avoid freeze-thaw cycles.
Concentration:	lot specific
Purification:	Whole antisera
Conjugation:	Unconjugated
Storage:	Store at -20°C as received.
Stability:	Stable for 12 months from date of receipt.
Predicted Protein Size:	160 kDa
Gene Name:	neurofilament, medium polypeptide
Database Link:	NP_005373 Entrez Gene 18040 Mouse Entrez Gene 24588 Rat Entrez Gene 4741 Human P07197



[View online »](#)

Background: Neurofilaments are the 10nm or intermediate filament proteins found specifically in neurons, and are composed predominantly of three major proteins called Neurofilament Light (NF-L), Neurofilament Medium (NF-M) and Neurofilament Heavy (NF-H). Neurofilament Medium is the middle or medium neurofilament subunit and runs on SDS-PAGE gels in the range 145-170kDa, with some variation in different species. Antibodies to Neurofilament Medium are useful to identify this protein and identify neurons and their processes in tissue sections and in tissue culture. Neurofilament Medium can also be useful in studies of neurofilament accumulations seen in many neurological diseases, such as Lou Gehrig's disease or Alzheimer's disease.

Synonyms: NEF3; NF-M; NFM

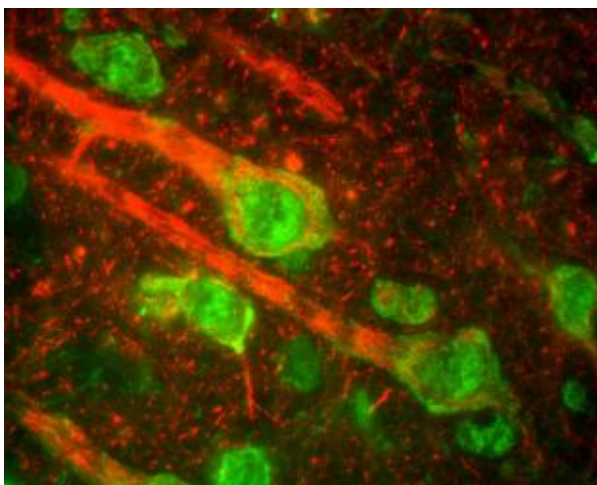
Note: This 160kDa Neurofilament Medium Antibody is useful for Western blot, Immunocytochemistry/Immunofluorescence, Immunohistochemistry-Paraffin, and Immunohistochemistry-Frozen. In Western blot a band can be seen around 145kDa corresponding to rodent Neurofilament Medium. Human and bovine Neurofilament Medium run a little slower and can be seen at about 160kDa.

Protein Pathways: Amyotrophic lateral sclerosis (ALS)

Product images:



Western Blot: 160kDa Neurofilament Medium Antibody TA336603 - Western blot analysis of 160kDa Neurofilament Medium expression on whole rat cerebellum homogenate using TA336603.



Immunocytochemistry/Immunofluorescence:
160kDa Neurofilament Medium Antibody
TA336603 - Section of rat cerebral cortex stained
with TA336603 (red), which reveals the perikarya
of pyramidal neurons and dendrites and axons
surrounding them. The green chan