

## Product datasheet for **TA336602**

### Neurofilament (NEFL) Mouse Monoclonal Antibody [Clone ID: DA2]

#### Product data:

Product Type:	Primary Antibodies
Clone Name:	DA2
Applications:	ICC/IF, IHC, Simple Western, WB
Recommended Dilution:	Immunohistochemistry: 1:250, Simple Western: 1:50, Immunohistochemistry-Paraffin, Western Blot: 1:5000 - 1:10000, Immunocytochemistry/ Immunofluorescence: 1:100 - 1:500
Reactivity:	Human, Mouse, Rat, Mammalian, Avian
Host:	Mouse
Isotype:	IgG1, kappa
Clonality:	Monoclonal
Immunogen:	Native Neurofilament Light protein purified from pig spinal cord [UniProt# P02547]
Formulation:	Preservative: 0.05% Sodium Azide. Aliquot and store at -20C or -80C. Avoid freeze-thaw cycles.
Concentration:	lot specific
Purification:	Ascites
Conjugation:	Unconjugated
Storage:	Store at -20°C as received.
Stability:	Stable for 12 months from date of receipt.
Gene Name:	neurofilament, light polypeptide
Database Link:	<a href="#">NP_006149</a> <a href="#">Entrez Gene 18039 Mouse</a> <a href="#">Entrez Gene 83613 Rat</a> <a href="#">Entrez Gene 4747 Human</a> <a href="#">P07196</a>



[View online »](#)

**Background:**

Neuronal intermediate filaments or neurofilaments are found specifically in neurons where they play a key role in maintaining neuronal morphology as well as in regenerating myelinated axons. Neurofilaments contain three subunits: a light polypeptide (NEFL/NFL), a medium polypeptide (NEFM/NFM), and a heavy polypeptide (NEFH/NFH), with molecular weights of 68, 160, and 212 kD respectively. 68kD Neurofilament Light (NEFL) is the most abundant of three neurofilament proteins and, like other nonepithelial intermediate filament proteins, it can form homopolymeric 10-nm filaments. NEFL forms the backbone of neurofilament and perturbations in its expression leads to motor neuron diseases, such as Charcot-Marie-Tooth disease, type 2E (CMT2E). In addition to its influence on the nervous system, NEFL has been shown to act as a tumor suppressor and has been linked to carcinogenesis/metastasis of several malignancies including breast, prostate, lung, colon, and bladder cancer.

**Synonyms:**

CMT1F; CMT2E; NF-L; NF68; NFL; PPP1R110

**Note:**

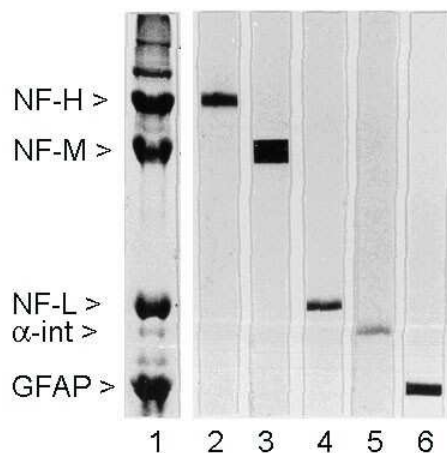
This 68kDa Neurofilament Light antibody is useful in Immunocytochemistry/Immunofluorescence, Immunohistochemistry and Western blot.

**Protein Families:**

Druggable Genome, ES Cell Differentiation/IPS

**Protein Pathways:**

Amyotrophic lateral sclerosis (ALS)

**Product images:**


Western Blot: NF-L Antibody (DA2) TA336602 - Rat spinal cord homogenate showing the major intermediate filament proteins of the nervous system (lane 1). The remaining lanes show blots of this material stained with various antibodies including TA336602 (lane 4).



Simple Western: NF-L Antibody (DA2) TA336602 - Image shows a specific band for NF-L in 0.5 mg/mL of Human Brain lysate. This experiment was performed under reducing conditions using the 12-230 kDa separation system.