

Product datasheet for **TA336601**

Neurofilament (NEFL) Rabbit Polyclonal Antibody

Product data:

Product Type:	Primary Antibodies
Applications:	IF, WB
Recommended Dilution:	WB: 1:20000, IF: 1:500-1:5000, IHC: 1:5000, IHC-P: 1:5000
Reactivity:	Human, Mouse, Rat, Bovine, Mammalian, Porcine, Avian
Host:	Rabbit
Clonality:	Polyclonal
Immunogen:	Native Neurofilament Light protein purified from pig spinal cord [UniProt# P02547]
Formulation:	Store at 4C short term. Aliquot and store at -20C long term. Avoid freeze-thaw cycles.
Concentration:	lot specific
Purification:	Whole antisera
Conjugation:	Unconjugated
Storage:	Store at -20°C as received.
Stability:	Stable for 12 months from date of receipt.
Predicted Protein Size:	68 kDa
Gene Name:	neurofilament, light polypeptide
Database Link:	NP_006149 Entrez Gene 18039 Mouse Entrez Gene 83613 Rat Entrez Gene 4747 Human P07196



[View online »](#)

Background: Neuronal intermediate filaments or neurofilaments are found specifically in neurons where they play a key role in maintaining neuronal morphology as well as in regenerating myelinated axons. Neurofilaments contain three subunits: a light polypeptide (NEFL/NFL), a medium polypeptide (NEFM/NFM), and a heavy polypeptide (NEFH/NFH), with molecular weights of 68, 160, and 212 kD respectively. 68kD Neurofilament Light (NEFL) is the most abundant of three neurofilament proteins and, like other nonepithelial intermediate filament proteins, it can form homopolymeric 10-nm filaments. NEFL forms the backbone of neurofilament and perturbations in its expression leads to motor neuron diseases, such as Charcot-Marie-Tooth disease, type 2E (CMT2E). In addition to its influence on the nervous system, NEFL has been shown to act as a tumor suppressor and has been linked to carcinogenesis/metastasis of several malignancies including breast, prostate, lung, colon, and bladder cancer.

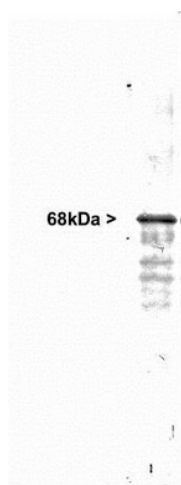
Synonyms: CMT1F; CMT2E; NF-L; NF68; NFL; PPP1R110

Note: This 68kDa Neurofilament Light antibody is useful in Immunocytochemistry/Immunofluorescence, Immunohistochemistry paraffin embedded sections and Western blot.

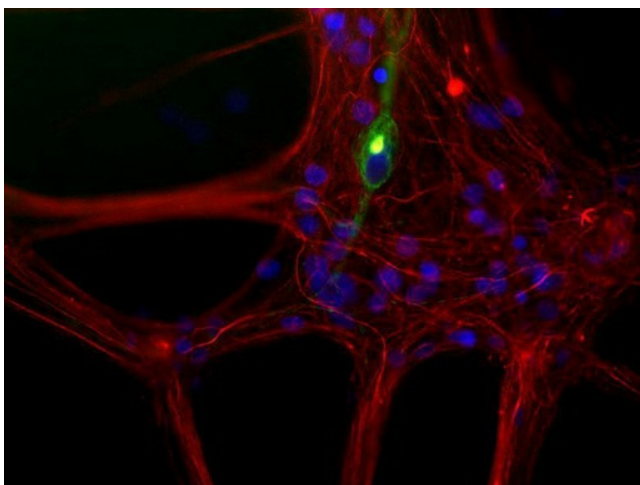
Protein Families: Druggable Genome, ES Cell Differentiation/IPS

Protein Pathways: Amyotrophic lateral sclerosis (ALS)

Product images:



Western Blot: 68kDa Neurofilament Light Antibody TA336601 - Western blot of whole rat cerebellum homogenate stained with TA336601, at dilution of 1:20,000. A prominent band running with an apparent SDS-PAGE molecular weight of ~68kDa corresponds to the



Immunocytochemistry/Immunofluorescence:
68kDa Neurofilament Light Antibody TA336601 -
Mixed neuron/glia cultures from newborn rat
brain stained with NB300-220 antibody to
peripherin (green) and rabbit polyclonal antibody
to NF-L RPCA-NF-L (red channel).