

Product datasheet for **TA336591**

p16INK4A (CDKN2A) Rabbit Polyclonal Antibody

Product data:

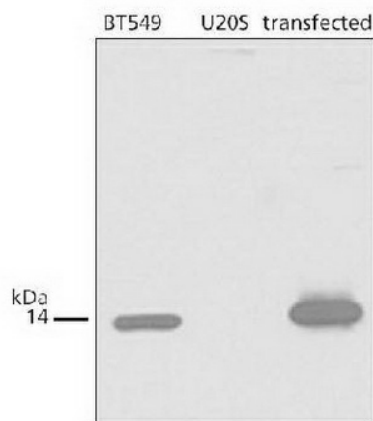
Product Type:	Primary Antibodies
Applications:	IHC, WB
Recommended Dilution:	WB: 1:500-1:2500, ELISA: 1:100-1:2000, IHC: 1:100-1:500, IHC-P: 1:100-1:500
Reactivity:	Human
Host:	Rabbit
Clonality:	Polyclonal
Immunogen:	The epitope recognized by this antibody maps to a region between residue 125 and the C-terminus (residue 173) of human p14ARF using the numbering given in entry NP_478102.1 (GeneID 1029).
Formulation:	Tris-citrate/phosphate, pH 7, 0.1% Sodium azide. Store at 4C. Do not freeze.
Concentration:	lot specific
Purification:	Immunogen affinity purified
Conjugation:	Unconjugated
Storage:	Store at -20°C as received.
Stability:	Stable for 12 months from date of receipt.
Predicted Protein Size:	14 kDa
Gene Name:	cyclin-dependent kinase inhibitor 2A
Database Link:	NP_000068 Entrez Gene 1029 Human Q8N726



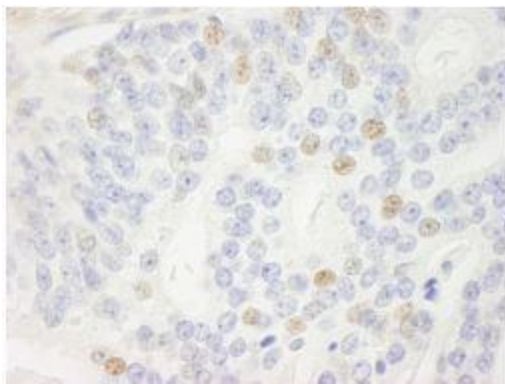
[View online »](#)

- Background:** ARF (alternative reading frame; p14ARF in human, p19ARF in mouse) is a tumor suppressor that serves as a sensor of hyper-proliferative signals, resulting in p53-dependent growth arrest and apoptotic cell death. ARF interacts with several proteins including COMMD1, CDKN2AIP, TBRG1, E4F1, C1QBP etc. and can bind to BCL6, E2F1, HUWE1, MDM2, MYC, NPM1/B23, TOP1/TOPOI as well as UBE2I/UBC9. ARF has the capability of inducing cell cycle arrest in G1 as well as G2 phases. While ARF is not expressed at significant levels in most normal tissues, oncogene activation triggers ARF overexpression, resulting in inhibition of MDM2 ubiquitin ligase and stabilization of p53. It is induced by progesterone as well as Ras/DMTF1, and is downregulated through NFkB p65 subunit (RELA). Inhibition of the p53 pathway, most commonly via mutations in p53 itself, inactivation of ARF, or amplification of MDM2 has been proposed to be a crucial step in pathogenesis of most human malignancies. Moreover, mice with ARF have been shown to develop tumors rapidly and to display delayed mammary gland involution.
- Synonyms:** ARF; CDK4I; CDKN2; CMM2; INK4; INK4A; MLM; MTS-1; MTS1; P14; P14ARF; P16; P16-INK4A; P16INK4
- Note:** This p14ARF antibody is useful for ELISA, Immunohistochemistry on paraffin-embedded sections and Western blot. In WB a band is seen at ~14 kDa representing p14ARF. *The investigator should determine the optimal working dilution for a specific application.
- Protein Families:** Druggable Genome
- Protein Pathways:** Bladder cancer, Cell cycle, Chronic myeloid leukemia, Glioma, Melanoma, Non-small cell lung cancer, p53 signaling pathway, Pancreatic cancer, Pathways in cancer

Product images:



Western Blot: p14ARF Antibody TA336591 - Western blot detection of p14ARF using TA336591. Samples: WCE (25 ug) from BT549, positive control and U205 negative control and transfected IMR90 cells.



Immunohistochemistry-Paraffin: p14ARF
Antibody TA336591 - FFPE section of human
prostate adenocarcinoma. Affinity purified rabbit
anti-p14ARF used at a dilution of 1:250.