

## Product datasheet for **TA336589**

### TRPM8 Rabbit Polyclonal Antibody

#### Product data:

Product Type:	Primary Antibodies
Applications:	IHC, WB
Recommended Dilution:	WB: 1:500 -1:1000, ELISA: 1:100-1:2000, IF: 1:10-1:500, IHC: 1:10-1:500, IHC-F: 1:10-1:500, IHC-P: 1:10-1:500
Reactivity:	Human, Mouse, Drosophila
Host:	Rabbit
Clonality:	Polyclonal
Immunogen:	Synthetic peptides made to residues 278-292 RNQLEKYISERTIQD and the C-terminus sequence NDLKGLLKEIANKIK of the human trp-p8 protein.
Formulation:	PBS, 0.02% Sodium Azide. Store at 4C short term. Aliquot and store at -20C long term. Avoid freeze-thaw cycles.
Concentration:	lot specific
Purification:	Immunogen affinity purified
Conjugation:	Unconjugated
Storage:	Store at -20°C as received.
Stability:	Stable for 12 months from date of receipt.
Predicted Protein Size:	125 kDa
Gene Name:	transient receptor potential cation channel subfamily M member 8
Database Link:	<a href="#">NP_076985</a> <a href="#">Entrez Gene 171382 Mouse</a> <a href="#">Entrez Gene 79054 Human</a> <a href="#">Q7Z2W7</a>
Background:	A novel gene, trp-p8 has an expression pattern within normal human tissues that is mostly restricted to prostate epithelial cells. Trp-p8 mRNA expression is at moderate levels in normal prostate tissue and appears to be elevated in prostate cancer. Notably, trp-p8 mRNA was also expressed in a number of nonprostatic primary tumors of the breast, colon, lung and skin origin, whereas transcripts encoding trp-p8 were hardly detected or not detected in the corresponding normal human tissues.
Synonyms:	LTRPC6; TRPP8

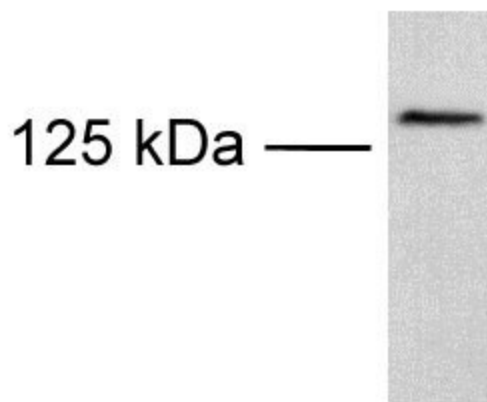


[View online »](#)

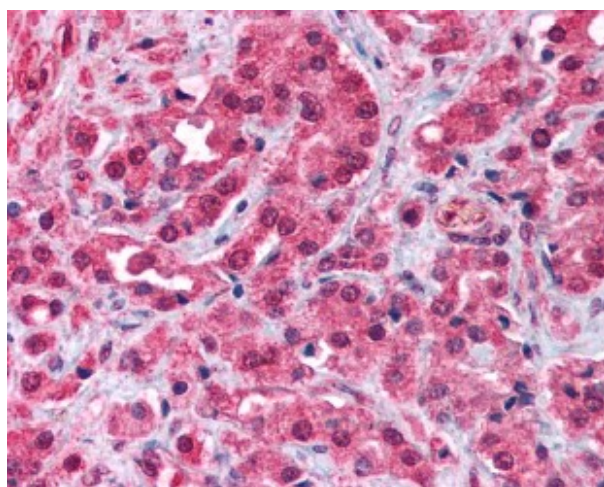
**Note:** This antibody has been tested to work in Western Blot and immunohistochemistry on paraffin and frozen sections.

**Protein Families:** Druggable Genome, Ion Channels: Transient receptor potential, Transmembrane

**Product images:**



Western Blot: TRPM8 Antibody TA336589 - Analysis of TRPM8 in transfected COS cells using TA336589 at 1:750 and incubated overnight at 4C. Secondary rabbit HRP antibody was incubated 1 hour at RT followed by ECL detection.



Immunohistochemistry: TRPM8 Antibody TA336589 - Prostate cancer: Formalin-Fixed Paraffin-Embedded (FFPE)