

Product datasheet for **TA336588**

Prostate Specific Antigen (KLK3) Rabbit Polyclonal Antibody

Product data:

Product Type:	Primary Antibodies
Applications:	WB
Recommended Dilution:	WB: 1:100-1:2000, ELISA: 1:100-1:2000, IHC: 1:10-1:500, IHC-F: 1:10-1:500, IHC-P: 1:10-1:500, IP: 1:10-1:500
Reactivity:	Human
Host:	Rabbit
Clonality:	Polyclonal
Immunogen:	Residues 247-261 [VHYRKWIKDTIVANP] of the human KLK 3 protein
Formulation:	PBS, 0.02% Sodium Azide. Store at 4C short term. Aliquot and store at -20C long term. Avoid freeze-thaw cycles.
Concentration:	lot specific
Purification:	Immunogen affinity purified
Conjugation:	Unconjugated
Storage:	Store at -20°C as received.
Stability:	Stable for 12 months from date of receipt.
Predicted Protein Size:	29 kDa
Gene Name:	kallikrein related peptidase 3
Database Link:	NP_001639 Entrez Gene 354 Human P07288
Background:	Kallikreins are a subgroup of serine proteases and are implicated in carcinogenesis. KLK 3 (also known as prostate specific antigen) is a marker for prostatic cancer and is involved in the pathogenesis and/or progression of prostate, breast, and possibly other malignancies. PSA is a protease present in seminal plasma. It is thought to function normally in the liquefaction of seminal coagulum, presumably by hydrolysis of the high molecular mass seminal vesicle protein. Serum levels of this protein are useful in the diagnosis and monitoring of prostatic carcinoma
Synonyms:	APS; hK3; KLK2A1; PSA



[View online »](#)

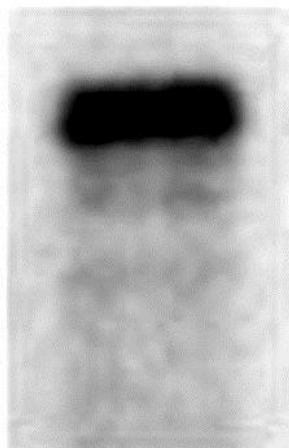
Note: Western blot

Protein Families: Druggable Genome, Protease, Secreted Protein

Protein Pathways: Pathways in cancer, Prostate cancer

Product images:

29 kDa



Western Blot: Prostate Specific Antigen Antibody TA336588 - Analysis of Prostate Specific Antigen (PSA / KLK3) in LNCaP cells using this antibody at a dilution of 1:1000