

Product datasheet for **TA336586**

Presenilin 1 (PSEN1) Rabbit Polyclonal Antibody

Product data:

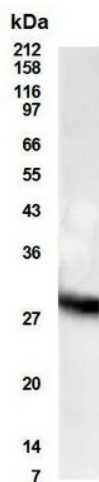
Product Type:	Primary Antibodies
Applications:	WB
Recommended Dilution:	WB: , ELISA: 1:100-1:2000, IHC: 1:10-1:500, IHC-F: 1:10-1:500, IHC-P: 1:10-1:500, IP: 1:10-1:500
Reactivity:	Human
Host:	Rabbit
Clonality:	Polyclonal
Immunogen:	Synthetic peptides corresponding to the N terminal sequence MVELMFP and the C terminal sequence LLGLPID of the human Presenilin 1 protein.
Formulation:	PBS, 0.02% Sodium Azide. Store at 4C short term. Aliquot and store at -20C long term. Avoid freeze-thaw cycles.
Concentration:	lot specific
Purification:	Immunogen affinity purified
Conjugation:	Unconjugated
Storage:	Store at -20°C as received.
Stability:	Stable for 12 months from date of receipt.
Gene Name:	presenilin 1
Database Link:	NP_000012 Entrez Gene 5663 Human P49768
Background:	Presenilin 1 is a novel prostate short-chain dehydrogenase/reductase that exhibits increased expression on exposure to androgens in the LNCaP prostate cancer cell line. Presenilin 1 is expressed in normal and neoplastic prostate epithelium and is implicated in the pathogenesis of prostate carcinoma.
Synonyms:	AD3; FAD; PS-1; PS1; S182
Note:	This Presenilin 1 antibody is useful for Immunoprecipitation, Immunohistochemistry frozen and paraffin embedded sections and ELISA.
Protein Families:	Druggable Genome, Protease, Transmembrane



[View online »](#)

Protein Pathways: Alzheimer's disease, Neurotrophin signaling pathway, Notch signaling pathway, Wnt signaling pathway

Product images:



Western Blot: Presenilin 1 Antibody TA336586 - Analysis of Human Presenilin 1 / PSDR1 in androgen-stimulated metastatic adenocarcinoma LNCaP.FGC cells with Presenilin 1 antibody at a dilution of 1:500