

## Product datasheet for **TA336583**

### p16INK4A (CDKN2A) Rabbit Polyclonal Antibody

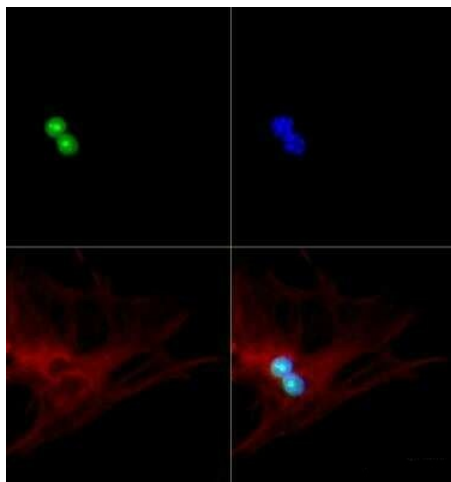
#### Product data:

Product Type:	Primary Antibodies
Applications:	ELISA, ICC/IF, IHC, WB
Recommended Dilution:	Immunohistochemistry: 10 ug/ml, Immunohistochemistry-Paraffin: 10 ug/ml, ELISA: 1:100-1:2000, Immunocytochemistry/ Immunofluorescence: 1:50 - 1:100, Western Blot: 2 ug/ml, Immunohistochemistry-Frozen: 1 ug/ml
Reactivity:	Mouse
Host:	Rabbit
Clonality:	Polyclonal
Immunogen:	Synthetic peptide conjugated to KLH, derived from a sequence within residues 50-150 of mouse p19ARF. [Swiss-Prot #P51480]
Formulation:	PBS, 0.02% Sodium Azide. Store at 4C short term. Aliquot and store at -20C long term. Avoid freeze-thaw cycles.
Concentration:	lot specific
Purification:	Immunogen affinity purified
Conjugation:	Unconjugated
Storage:	Store at -20°C as received.
Stability:	Stable for 12 months from date of receipt.
Predicted Protein Size:	19 kDa
Gene Name:	cyclin-dependent kinase inhibitor 2A
Database Link:	<a href="#">NP_000068</a> <a href="#">Entrez Gene 12578 Mouse</a> <a href="#">Q8N726</a>

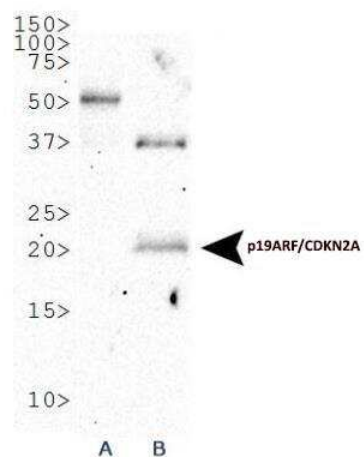


[View online »](#)

<b>Background:</b>	The ARF gene, p19ARF in mouse and p14ARF in human, has become an important player in cell cycle regulation. In mice, tumor suppressor effects appear to be mediated by interactions between p19ARF and the p53 tumor suppressor protein. p19ARF counters uncontrolled proliferation and oncogenic signals in p53 dependent pathways. Proteins encoded by the INK4a/ARF locus also play a role in Abelson virus transformation. Both p16INK4a and p19ARF are expressed in many cells as they emerge from the apoptotic crisis that characterizes the transformation process. p19ARF is an important part in cellular defense against transforming signals from the Abl oncoprotein, providing direct evidence that the p19ARF-p53 regulatory loop plays an important role in lymphoma induction.
<b>Synonyms:</b>	ARF; CDK4I; CDKN2; CMM2; INK4; INK4A; MLM; MTS-1; MTS1; P14; P14ARF; P16; P16-INK4A; P16INK4
<b>Note:</b>	This p19ARF antibody is useful for ELISA, Immunohistochemistry on paraffin-embedded and frozen sections, Immunocytochemistry/Immunofluorescence and Western Blot. In WB a band can be seen at approximately 19 kDa.
<b>Protein Families:</b>	Druggable Genome
<b>Protein Pathways:</b>	Bladder cancer, Cell cycle, Chronic myeloid leukemia, Glioma, Melanoma, Non-small cell lung cancer, p53 signaling pathway, Pancreatic cancer, Pathways in cancer

**Product images:**

Immunocytochemistry/Immunofluorescence:  
p19ARF/CDKN2A Antibody TA336583 - Antibody was tested in MEF cells with DyLight 488 (green). Nuclei and alpha-tubulin were counterstained with DAPI (blue) and DyLight 550 (red).



Western Blot: p19ARF/CDKN2A Antibody  
TA336583 - Analysis of p19ARF/CDKN2A in (A)  
NIH/3T3 and (B) MEF cells.