

Product datasheet for **TA336573**

SIAH1 Mouse Monoclonal Antibody [Clone ID: 8G7H12]

Product data:

Product Type:	Primary Antibodies
Clone Name:	8G7H12
Applications:	IP, WB
Recommended Dilution:	Western Blot: 1:500, Immunoprecipitation: 1:10-1:500
Reactivity:	Human, Rat, Drosophila, Porcine, Zebrafish, Mouse
Host:	Mouse
Isotype:	IgG1
Clonality:	Monoclonal
Immunogen:	Synthetic peptide made to a C-terminal portion of the drosophila SINA protein (within residues 280-331). [Swiss-Prot# P21461]
Formulation:	Tris-citrate/phosphate, pH 7, 0.1% Sodium azide. Store at 4C. Do not freeze.
Concentration:	lot specific
Purification:	Tissue culture supernatant
Conjugation:	Unconjugated
Storage:	Store at -20°C as received.
Stability:	Stable for 12 months from date of receipt.
Predicted Protein Size:	37 kDa
Gene Name:	siah E3 ubiquitin protein ligase 1
Database Link:	NP_003022 Entrez Gene 140941 Rat Entrez Gene 6477 Human Q8IUQ4

Background: The Drosophila SINA (seven in absentia) protein is an E3 ubiquitin ligase component of the RAS signal transduction pathway. The RAS signal pathway controls cell proliferation, differentiation, and survival, and regulation of this pathway is critical for normal development. In Drosophila SINA serves as a downstream gatekeeper required for proper RAS signal transduction. Similarly to SINA in Drosophila, the human protein SIAH has also been shown to be required for oncogenic RAS signaling in cancer.



[View online »](#)

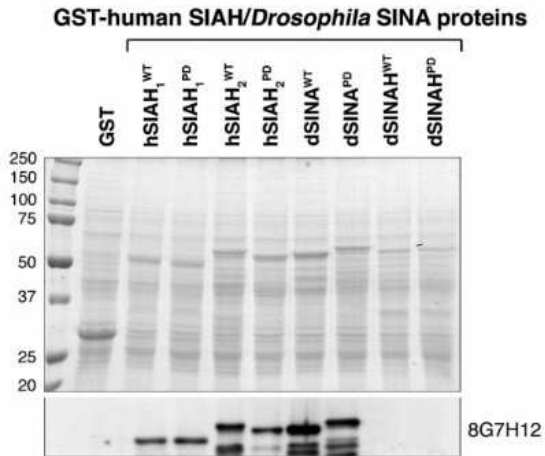
Synonyms: SIAH1A

Note: This SIAH1/2 antibody is useful for Immunoprecipitation and Western blot, where a band is seen at ~37 kDa.

Protein Families: Druggable Genome

Protein Pathways: p53 signaling pathway, Ubiquitin mediated proteolysis, Wnt signaling pathway

Product images:



Western Blot: SIAH1/2 Antibody (8G7H12)
TA336573 - Anti-SINA/SIAH monoclonal antibodies recognize both Drosophila SINA and human SIAH. There are two SINA-like E3 ligases, SINA and SINAH, in Drosophila. SINA monoclonal antibody 8G7H12 is highly speci