

Product datasheet for **TA336562**

SIAH2 Mouse Monoclonal Antibody [Clone ID: 24E6H3]

Product data:

Product Type:	Primary Antibodies
Clone Name:	24E6H3
Applications:	FC, ICC/IF, IHC, WB
Recommended Dilution:	Immunohistochemistry-Frozen: 1:40-1:50, Flow Cytometry: 1:10, Flow (Intracellular), Immunohistochemistry: 1:40-1:50, Immunocytochemistry/ Immunofluorescence: 1:10, Western Blot, Immunohistochemistry-Paraffin: 1:40-1:50
Reactivity:	Human, Drosophila, Porcine (Does not react with: Mouse)
Host:	Mouse
Isotype:	IgG1
Clonality:	Monoclonal
Immunogen:	Synthetic peptide made to an N-terminal portion of the drosophila SINA protein (within residues 1-100). [Swiss-Prot# P21461]
Formulation:	Preservative: 0.1% Sodium Azide. Store at 4C. Do not freeze.
Concentration:	lot specific
Purification:	Tissue culture supernatant
Conjugation:	Unconjugated
Storage:	Store at -20°C as received.
Stability:	Stable for 12 months from date of receipt.
Gene Name:	siah E3 ubiquitin protein ligase 2
Database Link:	NP_005058 Entrez Gene 20439 Mouse Entrez Gene 6478 Human O43255
Background:	The Drosophila SINA (seven in absentia) protein is an E3 ubiquitin ligase component of the RAS signal transduction pathway. The RAS signal pathway controls cell proliferation, differentiation, and survival, and regulation of this pathway is critical for normal development. In Drosophila SINA serves as a downstream gatekeeper required for proper RAS signal transduction. Similarly to SINA in Drosophila, the human protein SIAH has also been shown to be required for oncogenic RAS signaling in cancer.



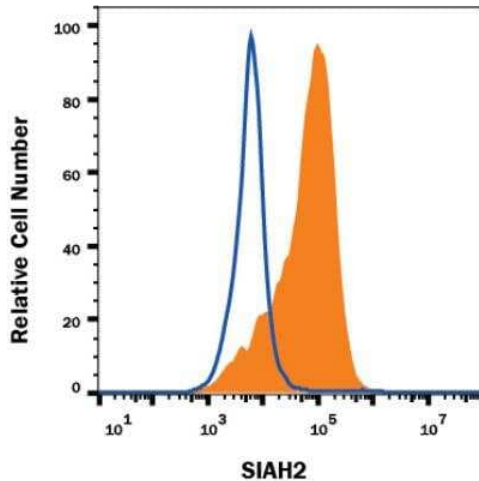
[View online »](#)

Synonyms: hSiah2

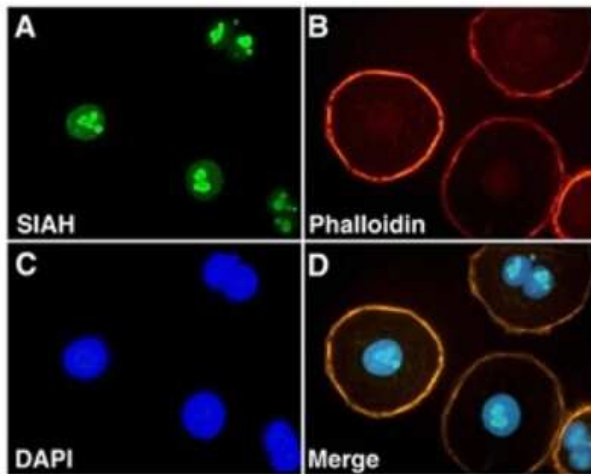
Note: This SIAH2 (24E6H3) antibody is useful for Flow Cytometry, Immunocytochemistry/Immunofluorescence and Immunohistochemistry on paraffin-embedded and frozen sections.

Protein Families: Druggable Genome, Transcription Factors

Product images:



Flow (Intracellular): SIAH2 Antibody (24E6H3) TA336562 - Human HepG2 cell line was stained with Mouse Anti- SIAH2 Monoclonal Antibody (Catalog# TA336562, orange), or Mouse IgG1 isotype control (Catalog# MAB002, blue) followed by APC-conjugated Anti-Mouse IgG Secondary Antibody (Catalog # F0101B). To facilitate intracellular staining, cells were fixed with Flow Cytometry Fixation Buffer (Catalog# FC004) and permeabilized with Flow Cytometry Permeabilization/Wash Buffer I (Catalog# FC005).



Immunocytochemistry/Immunofluorescence: SIAH2 Antibody (24E6H3) TA336562 - Staining of SIAH in ovarian carcinoma (OVCR3) cells using TA336562.