

Product datasheet for **TA336559**

Bcl x (BCL2L1) Rabbit Polyclonal Antibody

Product data:

Product Type:	Primary Antibodies
Applications:	WB
Recommended Dilution:	WB: 2 ug/ml
Reactivity:	Human, Canine, Feline, Sheep
Host:	Rabbit
Clonality:	Polyclonal
Immunogen:	Synthetic peptide made to an N-terminal portion of human BCL2L1 (within residues 30-70). [Swiss-Prot# Q07817]
Formulation:	Tris-citrate/phosphate, pH 7, 0.1% Sodium azide. Store at 4C. Do not freeze.
Concentration:	lot specific
Purification:	Immunogen affinity purified
Conjugation:	Unconjugated
Storage:	Store at -20°C as received.
Stability:	Stable for 12 months from date of receipt.
Predicted Protein Size:	26 kDa
Gene Name:	BCL2 like 1
Database Link:	NP_612815 Entrez Gene 598 Human Q07817

[View online »](#)

Background:

BCL2L1 (BCL2-like 1) is a member of BCL-2 protein family and proteins encoded by this gene are located at the outer mitochondrial membrane, where they have been shown to control outer mitochondrial membrane channel (VDAC) opening. VDAC has the ability to regulate mitochondrial membrane potential which is critical to regulation of ROS production as well as release of cytochrome c by mitochondria, both of which are the potent inducers of cellular apoptosis. BCL2L1 also acts as a regulator of G2 checkpoint and progression to cytokinesis during mitosis. There are two alternatively spliced transcript variants, which encode distinct isoforms, and the longer isoform Bcl-X(L) acts as an apoptotic inhibitor whereas the shorter form Bcl-X(S) acts as an apoptotic activator. Bcl-X(S) is expressed at high levels in cells undergoing high rate of turnover, such as developing lymphocytes. In contrast, Bcl-X(L) is found in tissues containing long-lived postmitotic cells, such as adult brain.

Synonyms:

Bcl-X; BCL-XL; BCL2L1; BCLX; PPP1R52; S

Note:

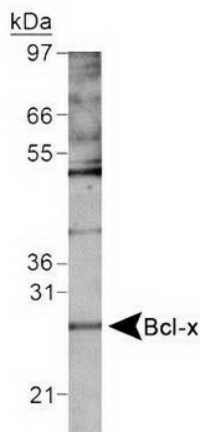
This BCL2L1 antibody is useful for Western blot, where a band is seen ~26 kDa. This antibody is not useful for ICC/IF.

Protein Families:

Druggable Genome, ES Cell Differentiation/IPS, Transmembrane

Protein Pathways:

Amyotrophic lateral sclerosis (ALS), Apoptosis, Chronic myeloid leukemia, Jak-STAT signaling pathway, Pancreatic cancer, Pathways in cancer, Small cell lung cancer

Product images:


Western Blot: Bcl-XI Antibody TA336559 - Detection of BCL2L1 in whole cell extract of A431 cell line using TA336559. The band at ~26kDa is the specific target band, whereas the band above ~50 kDa position is potentially a homodimer of BCL2L1.