

Product datasheet for **TA336552**

c Abl (ABL1) Rabbit Polyclonal Antibody

Product data:

Product Type:	Primary Antibodies
Applications:	IF, WB
Recommended Dilution:	WB: 2 ug/ml, IF: 1:500 - 1:1000
Reactivity:	Human, Mouse
Host:	Rabbit
Clonality:	Polyclonal
Immunogen:	Synthetic peptide made to an internal portion of human c Abl (within residues 700-800). [Swiss-Prot# P00519]
Formulation:	Tris-citrate/phosphate, pH 7, 0.1% Sodium azide. Store at 4C. Do not freeze.
Concentration:	lot specific
Purification:	Immunogen affinity purified
Conjugation:	Unconjugated
Storage:	Store at -20°C as received.
Stability:	Stable for 12 months from date of receipt.
Predicted Protein Size:	120 kDa
Gene Name:	ABL proto-oncogene 1, non-receptor tyrosine kinase
Database Link:	NP_009297 Entrez Gene 11350 Mouse Entrez Gene 25 Human P00519
Background:	c-ABL regulates cytoskeleton remodeling during cell differentiation, cell division and cell adhesion. It localizes to dynamic actin structures, and phosphorylates CRK and CRKL, DOK1, and other proteins controlling cytoskeleton dynamics. Activity of the c-Abl protein is negatively regulated by its SH3 domain, and deletion of the SH3 domain turns ABL1 into an oncogene. c-ABL also potentially regulates DNA repair by activating the proapoptotic pathway when the DNA damage is too severe to be repaired.
Synonyms:	ABL; abl; bcr; c-ABL; c-ABL1; JTK7; p150; v-abl



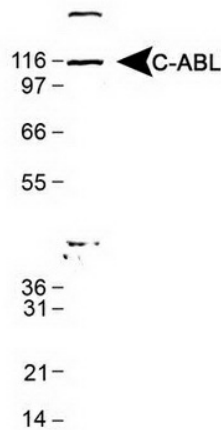
[View online »](#)

Note: This c Abl antibody is useful for Immunocytochemistry/Immunofluorescence and Western blot, where a band is seen ~120 kDa. In ICC/IF cytoplasmic staining is observed in untreated cells.

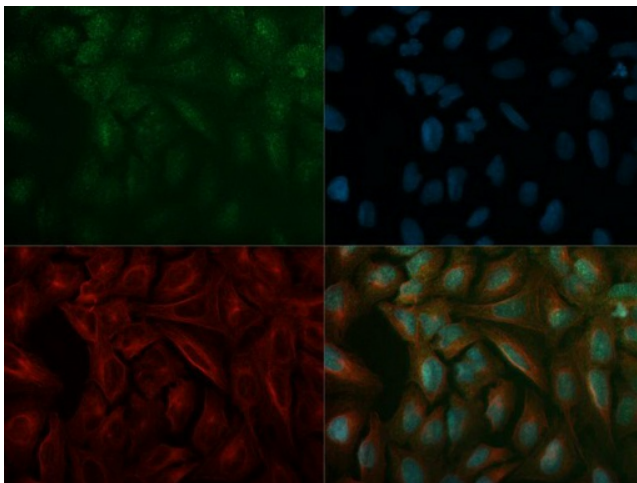
Protein Families: Druggable Genome, Protein Kinase, Transcription Factors

Protein Pathways: Axon guidance, Cell cycle, Chronic myeloid leukemia, ErbB signaling pathway, Neurotrophin signaling pathway, Pathogenic Escherichia coli infection, Pathways in cancer, Viral myocarditis

Product images:



Western Blot: c Abl Antibody TA336552 - Detection of C-ABL in K562 whole cell lysate using TA336552.



Immunocytochemistry/Immunofluorescence: c Abl Antibody TA336552 - ICC/IF staining of c-Abl in U2OS cells with DyLight 488 (green). Nuclei and alpha-tubulin were counterstained with DAPI (blue) and Dylight 550 (red).