

Product datasheet for **TA336548**

CNPase (CNP) Rabbit Polyclonal Antibody

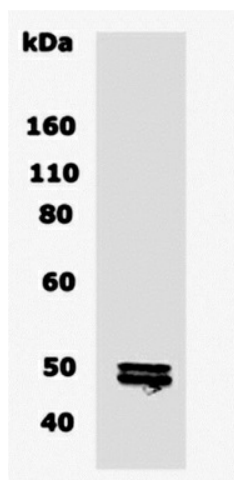
Product data:

Product Type:	Primary Antibodies
Applications:	WB
Recommended Dilution:	WB: 1:100-1:2000
Reactivity:	Human
Host:	Rabbit
Clonality:	Polyclonal
Immunogen:	Reacts with residues 68-84 of the 46-48 (doublet) kDa human, CNPase protein (74% sequence identity and 94% sequence similarity to mouse and rat).
Formulation:	PBS, 0.02% Sodium Azide. Store at 4C short term. Aliquot and store at -20C long term. Avoid freeze-thaw cycles.
Concentration:	lot specific
Purification:	Immunogen affinity purified
Conjugation:	Unconjugated
Storage:	Store at -20°C as received.
Stability:	Stable for 12 months from date of receipt.
Predicted Protein Size:	45 kDa
Gene Name:	2',3'-cyclic nucleotide 3' phosphodiesterase
Database Link:	NP_149124 Entrez Gene 1267 Human P09543
Background:	CNPase (2',3'-Cyclic Nucleotide 3'-Phosphodiesterase) exists in two forms: 46kDa (CNP1) and 48kDa (CNP2). It is expressed at high levels by oligodendrocytes in the central nervous system and by Schwann cells in the peripheral nervous system and is virtual absent in other cell types. CNPase activity is decreased in demyelinating diseases such as multiple sclerosis. CNPase gene is localized to chromosome 17q21, very near the BRCA 1 familial breast cancer gene.
Synonyms:	CNP1
Note:	This antibody is useful in Western Blot, ELISA and Immunohistochemistry



[View online »](#)

Product images:



CNPase Antibody TA336548 - WB detection of CNPase in 10ug of normal brain tissue lysate using CNPase antibody TA336548 at a dilution of 1:500