

## Product datasheet for **TA336547**

### Myelin Basic Protein (MBP) Rabbit Polyclonal Antibody

#### Product data:

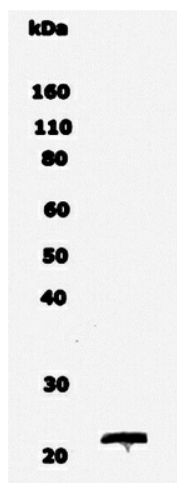
Product Type:	Primary Antibodies
Applications:	WB
Recommended Dilution:	WB: 1:500-1:1000, ELISA: 1:100-1:2000, IF: 1:10-1:500, IHC-P: 1:100-1:200
Reactivity:	Human, Mouse, Rat
Host:	Rabbit
Clonality:	Polyclonal
Immunogen:	Reacts with residues 49-62 of Isoforms 5 and 6 of the human protein. The immunogen corresponds to Isoform 1 between amino acids 182-195 of the 33 kDa isoform. The antibody also detects mouse and rat MBP protein. The antibody primarily detects a 22 kDa band
Formulation:	PBS, 0.02% Sodium Azide. Store at 4C short term. Aliquot and store at -20C long term. Avoid freeze-thaw cycles.
Concentration:	lot specific
Purification:	Immunogen affinity purified
Conjugation:	Unconjugated
Storage:	Store at -20°C as received.
Stability:	Stable for 12 months from date of receipt.
Predicted Protein Size:	22 kDa
Gene Name:	myelin basic protein
Database Link:	<a href="#">NP_001020252</a> <a href="#">Entrez Gene 17196 Mouse</a> <a href="#">Entrez Gene 24547 Rat</a> <a href="#">Entrez Gene 4155 Human</a> <a href="#">P02686</a>
Background:	Myelin Basic Protein (MBP) functions in the nervous system in myelination and is expressed in oligodendrocytes following differentiation. There are numerous isoforms generated by differential splicing events and post-translational modifications that have specialized functions. These functions include participation in signaling pathways prior to myelination, myelination or the re-myelination process following neural injury.
Synonyms:	MGC99675



[View online »](#)

**Note:** This antibody is useful in ELISA, Immunocytochemistry, Immunohistochemistry 1:100-1:200 and Western Blot. In WB a band is seen at approx. 22 kDa representing MBP.

**Product images:**



Western Blot: Myelin Basic Protein Antibody TA336547 - WB analysis of Myelin Basic Protein (MBP) in 10ug of normal brain lysate with antibody TA336547 at 1:500 dilution.