

Product datasheet for **TA336543**

Lactoperoxidase (LPO) Rabbit Polyclonal Antibody

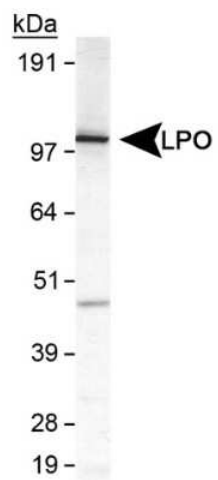
Product data:

Product Type:	Primary Antibodies
Applications:	WB
Recommended Dilution:	Western Blot: 0.5-2 ug/ml
Reactivity:	Human, Mouse, Bovine, Goat, Sheep
Host:	Rabbit
Clonality:	Polyclonal
Immunogen:	Synthetic peptide made to a C-terminal portion of the human Lactoperoxidase protein (within residues 650-712). [Swiss-Prot# P22079]
Formulation:	PBS, 0.02% Sodium Azide. Store at 4C short term. Aliquot and store at -20C long term. Avoid freeze-thaw cycles.
Concentration:	lot specific
Purification:	Immunogen affinity purified
Conjugation:	Unconjugated
Storage:	Store at -20°C as received.
Stability:	Stable for 12 months from date of receipt.
Predicted Protein Size:	100 kDa
Gene Name:	lactoperoxidase
Database Link:	NP_006142 Entrez Gene 76113 Mouse Entrez Gene 4025 Human P22079
Synonyms:	SPO
Note:	This Lactoperoxidase antibody is useful for Western blot analysis where a band is seen at ~100 kDa. Caution, do not use milk for the blocking or dilution buffers.
Protein Families:	Druggable Genome, Secreted Protein



[View online »](#)

Product images:



Western Blot: Lactoperoxidase Antibody
TA336543 - Detection of LPO in MDA-MB231 cell
lysate