

Product datasheet for **TA336542**

Lactoperoxidase (LPO) Rabbit Polyclonal Antibody

Product data:

Product Type:	Primary Antibodies
Applications:	WB
Recommended Dilution:	Western Blot: 0.5-2 ug/ml
Reactivity:	Human, Bovine, Primate
Host:	Rabbit
Clonality:	Polyclonal
Immunogen:	Synthetic peptide made to an internal portion of the human Lactoperoxidase protein (within residues 300-400). [Swiss-Prot# P22079]
Formulation:	PBS, 0.02% Sodium Azide. Store at 4C short term. Aliquot and store at -20C long term. Avoid freeze-thaw cycles.
Concentration:	lot specific
Purification:	Immunogen affinity purified
Conjugation:	Unconjugated
Storage:	Store at -20°C as received.
Stability:	Stable for 12 months from date of receipt.
Predicted Protein Size:	100 kDa
Gene Name:	lactoperoxidase
Database Link:	NP_006142 Entrez Gene 4025 Human P22079



[View online »](#)

Background:

Lactoperoxidase (LPO) is a heme-containing glycoprotein enzyme of about 78 kD molecular size expressed highly in mammary gland, salivary gland and bronchial submucosal glands, and consequently found in large amounts in secretory fluids such as milk, tears, saliva, and lung fluids. Lactoperoxidase belongs to mammalian peroxidase family with a prosthetic heme group covalently linked to the proteins and other members of this family include myeloperoxidase (MPO), eosinophil peroxidase (EPO), and thyroid peroxidase (TPO). In the presence of H₂O₂, lactoperoxidase oxidizes thiocyanate (SCN⁻) more efficiently than other peroxidases, whereas MPO, EPO, and TPO most efficiently oxidize chloride, bromide, and iodide, respectively, to form hypo(pseudo)halides. After extracellular transport, SCN⁻ gets oxidized either by peroxidases to form hypothiocyanite (OSCN⁻) or nonenzymatically by hypochlorite (OCl⁻). SCN exporters are the cystic fibrosis transmembrane conductance regulators, calcium-activated chloride channels, and pendrin/Slc26A4. OSCN⁻ is tissue-innocuous but has a broad-spectrum microbicidal and microbistatic activity.

Synonyms:

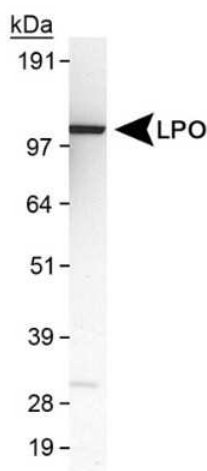
SPO

Note:

This Lactoperoxidase antibody is useful for Western blot analysis where a band is seen at ~100 kDa. Caution, do not use milk for the blocking or dilution buffers.

Protein Families:

Druggable Genome, Secreted Protein

Product images:


Western Blot: Lactoperoxidase Antibody
TA336542 - Detection of LPO in MDA-MB231 cell
lysate using TA336542.