

Product datasheet for **TA336526**

TOMM70A (TOMM70) Rabbit Polyclonal Antibody

Product data:

Product Type:	Primary Antibodies
Applications:	ICC/IF, Simple Western, WB
Recommended Dilution:	Immunocytochemistry/ Immunofluorescence: 1:100, Western Blot: 1:500, Simple Western: 1:50
Reactivity:	Human, Mouse, Rat
Host:	Rabbit
Clonality:	Polyclonal
Immunogen:	A synthetic peptide made to a region within residues 1-100 of the human TOM70 protein. [Swiss-Prot# O94826]
Formulation:	PBS. Aliquot and store at -20C or -80C. Avoid freeze-thaw cycles.
Concentration:	lot specific
Purification:	Protein A purified
Conjugation:	Unconjugated
Storage:	Store at -20°C as received.
Stability:	Stable for 12 months from date of receipt.
Predicted Protein Size:	67 kDa
Gene Name:	translocase of outer mitochondrial membrane 70
Database Link:	NP_055635 Entrez Gene 28185 Mouse Entrez Gene 304017 Rat Entrez Gene 9868 Human O94826



[View online »](#)

Background:

Most of mitochondrial proteins are synthesized by cytosolic ribosomes followed by import into mitochondria post-translationally with the help of cytosolic chaperones as well as mitochondrial translocators (import components). Translocase of the outer membrane (TOM) complex (TOMM5, TOMM6, TOMM7, TOMM20, TOMM22, TOMM40 and TOMM70) is the proteinaceous machinery that contains surface receptors for pre-protein recognition and serve as main entry gateway into mitochondria. Mitochondrial targeting requires different cytosolic factors, in particular the molecular chaperones (Hsc70/Hsp70 and Hsp90) whose activity occur in coordinated cycles of ATP hydrolysis/substrate binding and are regulated by a number of co-chaperone proteins including TOM70, a member of TPR (tetratricopeptide repeat) co-chaperone family. TOM70 contains a conserved TPR clamp domain for interaction with Hsc70 and Hsp90, and such interaction is essential for import process initiation. TOMM70 is a single-pass membrane protein localized in mitochondrion outer membrane and is ubiquitously expressed in various tissues where it acts as a receptor that accelerates the import of all mitochondrial precursor proteins. In addition to importing inner membrane carrier proteins, Tom70 is involved in targeting Mcl-1 to outer membrane via an internal EELD sequence.

Synonyms:

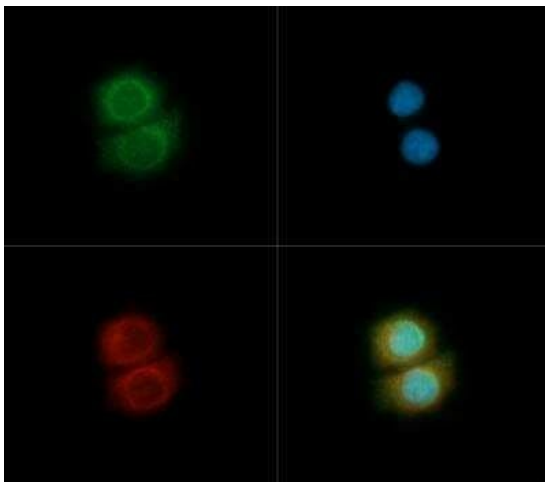
Tom70; TOMM70A

Note:

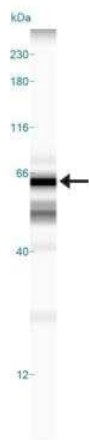
This TOM70 antibody is useful for Immunocytochemistry/Immunofluorescence and Western blot, where a band is seen at ~67 kDa. In ICC/IF mitochondrial staining was observed in MCF7 cells.

Protein Families:

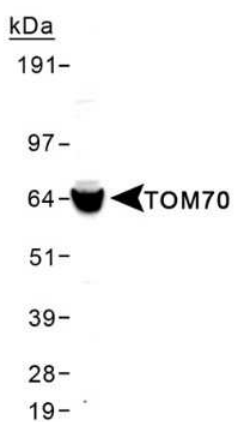
Transmembrane

Product images:

Immunocytochemistry/Immunofluorescence:
TOM70 Antibody TA336526 - TOM70 antibody was tested in MCF7 cells with Dylight 488 (green). Nuclei and alpha-tubulin were counterstained with DAPI (blue) and Dylight 550 (red).



Simple Western: TOM70 Antibody TA336526 - Simple Western lane view shows a specific band for TOM70 in 0.5 mg/ml of MCF-7 lysate. This experiment was performed under reducing conditions using the 12-230 kDa separation system.



Western Blot: TOM70 Antibody TA336526 - Detection of TOM70 in MCF7 mitochondrial lysate