

Product datasheet for **TA336525**

TMP21 (TMED10) Rabbit Polyclonal Antibody

Product data:

Product Type:	Primary Antibodies
Applications:	IHC, WB
Recommended Dilution:	Immunohistochemistry: 1 ug/ml, Western Blot: 2 ug/ml, Immunohistochemistry-Paraffin, Knockdown Validated
Reactivity:	Human, Mouse, Rat, Bovine, Primate, Rabbit, Xenopus
Host:	Rabbit
Clonality:	Polyclonal
Immunogen:	A synthetic peptide made to an internal sequence of the human TMP21 protein (within residues 50-150). [Swiss-Prot# P49755]
Formulation:	PBS, 30% glycerol, 0.1% Sodium Azide. Aliquot and store at -20C or -80C. Avoid freeze-thaw cycles.
Concentration:	lot specific
Purification:	Immunogen affinity purified
Conjugation:	Unconjugated
Storage:	Store at -20°C as received.
Stability:	Stable for 12 months from date of receipt.
Predicted Protein Size:	21 kDa
Gene Name:	transmembrane p24 trafficking protein 10
Database Link:	NP_006818 Entrez Gene 68581 MouseEntrez Gene 84599 RatEntrez Gene 10972 Human P49755



[View online »](#)

Background:

TMP21 (transmembrane protein Tmp21) is a type I transmembrane protein with large luminal domain belonging to p24 endoplasmic reticulum/Golgi cargo family and play key roles in protein transport, membrane structure organization and secretory pathway. TMP21 is ubiquitously expressed with highest protein levels observed in pancreas and intestines. In addition to its well established role in vesicle formation and cargo transport in ER/Golgi, TMP21 has been implicated in recruitment of small GTPase ADP-ribosylation factor 1 to Golgi apparatus and ADP-ribosylation factor 1-dependent assembly of actin in the Golgi. TMP21 forms a component of presenilin complex at the plasma membranes and modulates gamma-secretase cleavage. The cytoplasmic tails of p24 family interacts with coatomer (major component of coat protein complex I or COP-I), to facilitate transport between ER and Golgi. TMP21 cycles through the early secretory pathway between intermediate and cis-Golgi compartments, and is essential for proper organization of the Golgi apparatus. TMP21 also plays an essential and non-redundant role in earliest stages of mammalian development.

Synonyms:

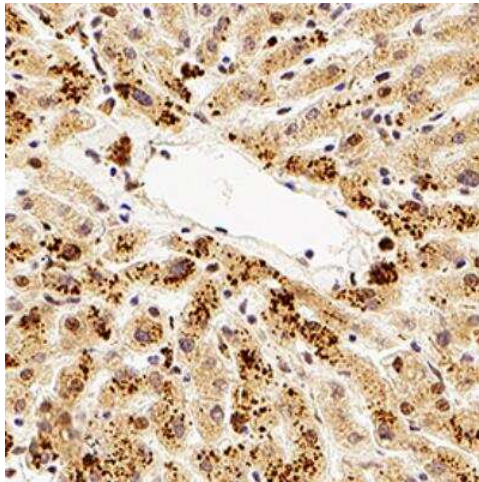
p23; P24(DELTA); p24d1; S31I125; S31III125; Tmp-21-I; TMP21

Note:

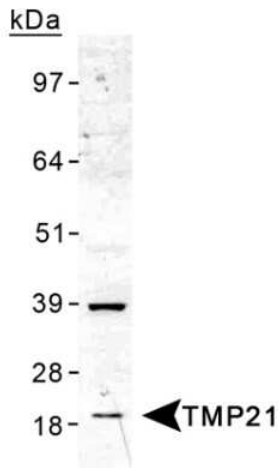
This TMP21 antibody is useful for Immunohistochemistry and Western blot analysis, where a band is seen at ~21 kDa.

Protein Families:

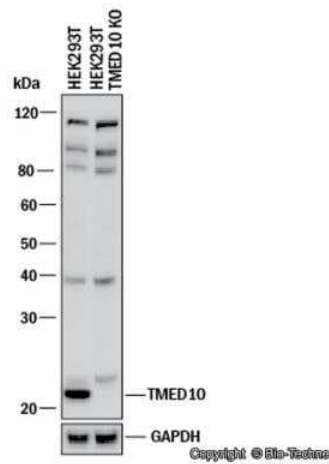
Transmembrane

Product images:

Immunohistochemistry-Paraffin: Tmp21/p23 Antibody TA336525 - Tmp21/p23 was detected in immersion fixed paraffin-embedded sections of human liver using Rabbit Anti-Human TMP21/p23 polyclonal Antibody (Catalog # TA336525) at 1 ug/ml for 1 hour at room temperature followed by incubation with the Anti-Rabbit IgG VisUCyte™ HRP Polymer Antibody (Catalog # VC003). Tissue was stained using DAB (brown) and counterstained with hematoxylin (blue). Specific staining was localized to the cytoplasm in hepatocytes.



Western Blot: TMP21 Antibody TA336525 - Detection of TMP21 in human liver lysate using TA336525.



Knockdown Validated: Tmp21/p23 Antibody TA336525 - Western blot shows lysates of HEK293T human embryonic kidney parental cell line and TMP21/TMED10 knockout (KO) HEK293T cell line. PVDF membrane was probed with 2.0 ug/ml of Rabbit Anti-Human TMP21/TMED10 Polyclonal Antibody (Catalog # TA336525) followed by HRP-conjugated Anti-Rabbit IgG Secondary Antibody (Catalog #HAF008). Specific band was detected for TMP21/TMED10 at approximately 25 kDa (as indicated) in the parental HEK293T cell line, but is not detectable in the knockout HEK293T cell line. This experiment was conducted under reduc