

## Product datasheet for **TA336519**

### ADFP (PLIN2) Rabbit Polyclonal Antibody

#### Product data:

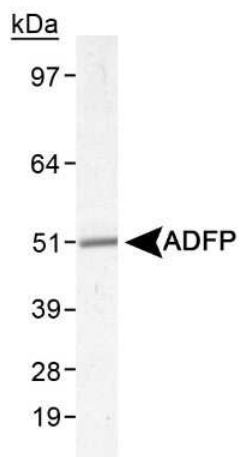
Product Type:	Primary Antibodies
Applications:	ICC/IF, IHC, Simple Western, WB
Recommended Dilution:	Immunohistochemistry, Immunohistochemistry-Frozen, Immunocytochemistry/ Immunofluorescence: 1:50-1:200, Western Blot: 2 ug/ml, Immunohistochemistry-Paraffin: 1:200, Simple Western: 1:50, Dual RNAscope ISH-IHC
Reactivity:	Human, Mouse
Host:	Rabbit
Clonality:	Polyclonal
Immunogen:	A synthetic peptide made to a C-terminal region of mouse ADFP (within residues 350-425) [Swiss-Prot# P43883]
Formulation:	Tris-glycine, 150 mM NaCl, 0.05% Sodium Azide. Aliquot and store at -20C or -80C. Avoid freeze-thaw cycles.
Concentration:	lot specific
Purification:	Immunogen affinity purified
Conjugation:	Unconjugated
Storage:	Store at -20°C as received.
Stability:	Stable for 12 months from date of receipt.
Predicted Protein Size:	51 kDa
Gene Name:	perilipin 2
Database Link:	<a href="#">NP_001113</a> <a href="#">Entrez Gene 11520 MouseEntrez Gene 101055843 MouseEntrez Gene 123 Human</a> <a href="#">Q99541</a>
Synonyms:	ADFP; ADRP
Note:	This ADFP antibody can be used for Western blot and Immunofluorescence/Immunocytochemistry. In Western blot a band is observed at ~51 kDa. In ICC/IF, membrane staining was observed in HeLa cells. In IHC-P, staining was observed on the membrane of mouse liver cells Prior to immunostaining paraffin tissues, antigen retrieval with sodium citrate buffer (pH 6.0) is recommended.



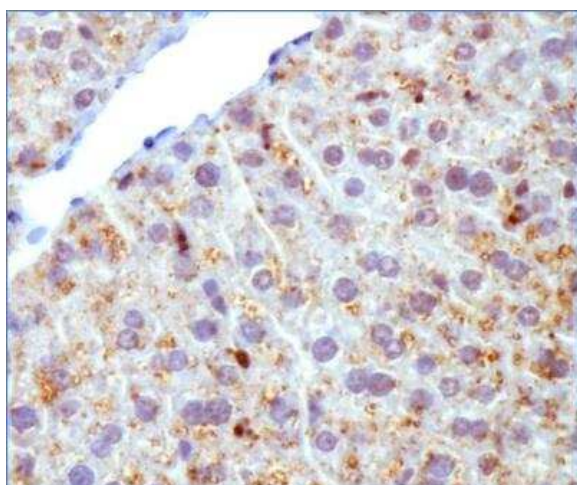
[View online »](#)

Protein Families: Druggable Genome

### Product images:



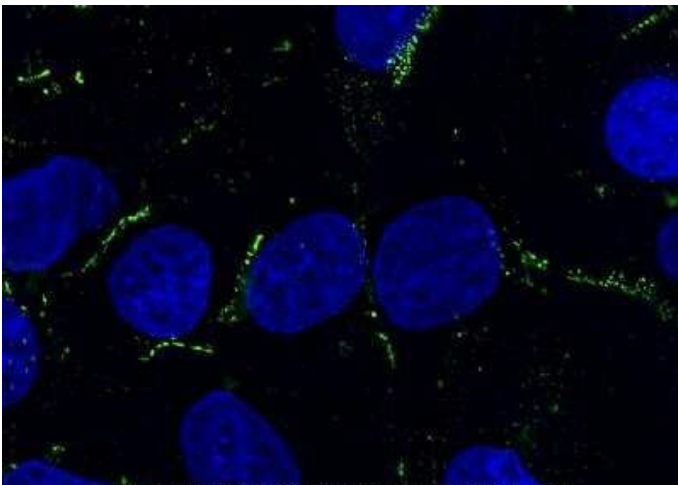
Detection of murine ADFP in mouse liver lysate.



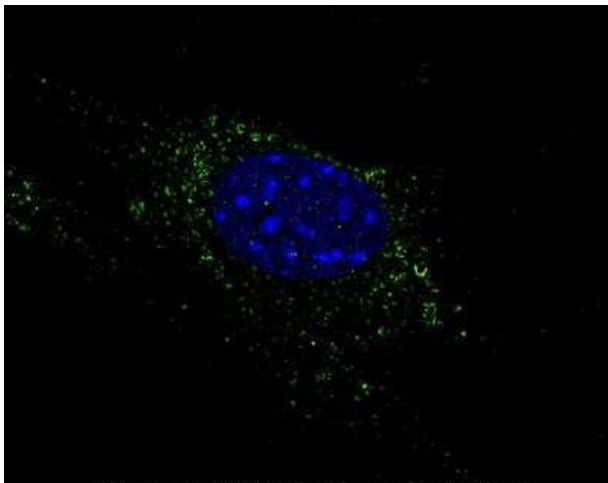
ADFP antibody was tested in mouse liver using DAB with hematoxylin counterstain.



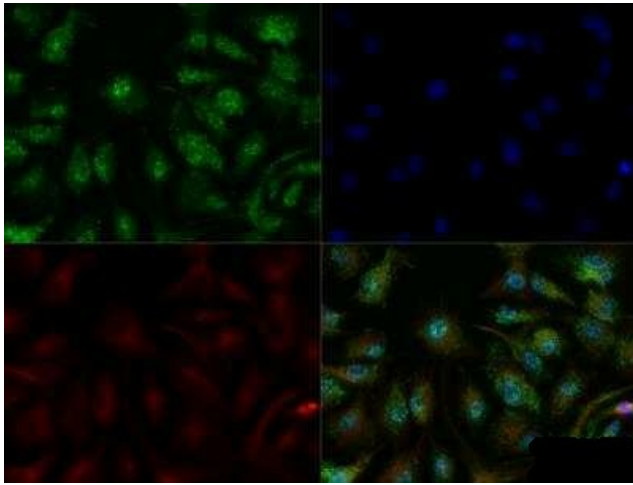
Simple Western lane view shows a specific band for ADFP in 0.5 mg/ml of HepG2 lysate. This experiment was performed under reducing conditions using the 12-230 kDa separation system.



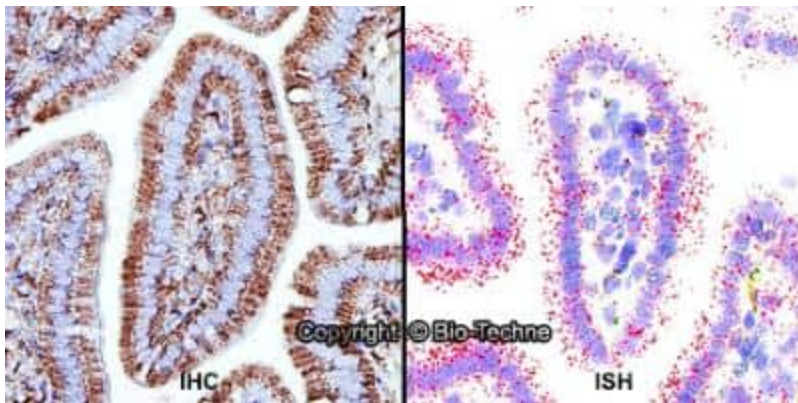
HepG2 cells were fixed in 4% paraformaldehyde for 10 minutes and permeabilized in 0.05% Triton X-100 in PBS for 5 minutes. The cells were incubated with anti-Perilipin-2/ADFP Antibody TA336519 at 1 ug/ml overnight at 4C and detected with an anti-rabbit Dylight 488 (Green) at a 1:1000 dilution for 60 minutes. Nuclei were counterstained with DAPI (Blue). Cells were imaged using a 100X objective and digitally deconvolved.



NIH3T3 cells were fixed in 4% paraformaldehyde for 10 minutes and permeabilized in 0.05% Triton X-100 in PBS for 5 minutes. The cells were incubated with anti-Perilipin-2/ADFP Antibody TA336519 at 1 ug/ml overnight at 4C and detected with an anti-rabbit Dylight 488 (Green) at a 1:1000 dilution for 60 minutes. Nuclei were counterstained with DAPI (Blue). Cells were imaged using a 100X objective and digitally deconvolved.



HepG2 cells were fixed for 10 minutes using 10% formalin and then permeabilized for 5 minutes using 1X TBS + 0.5% Triton-X100. The cells were incubated with anti-Perilipin-2/ADFP at a 1:100 dilution overnight at 4C and detected with an anti-rabbit Dylight 488 (Green) at a 1:500 dilution. Alpha tubulin (DM1A) NB100-690 was used as a co-stain at a 1:1000 dilution and detected with an anti-mouse Dylight 550 (Red) at a 1:500 dilution. Nuclei were counterstained with DAPI (Blue). Cells were imaged using a 40X objective.



Formalin-fixed paraffin-embedded tissue sections of mouse intestine were probed for Perilipin-2/ADFP mRNA (ACD RNAScope Probe, catalog #577111; Fast Red chromogen, ACD catalog # 322750). Adjacent tissue section was processed for immunohistochemistry using Rabbit Polyclonal (Novus Biologicals catalog # TA336519) at 1:150 dilution with overnight incubation at 4 degrees Celsius followed by incubation with anti-rabbit IgG VisUCyte HRP Polymer Antibody (Catalog # VC003) and DAB chromogen (yellow-brown). Tissue was counterstained with hematoxylin (blue). Specific staining was localized to intestinal villi.