

## Product datasheet for **TA336513**

### Metabotropic Glutamate Receptor 1 (GRM1) Rabbit Polyclonal Antibody

#### Product data:

Product Type:	Primary Antibodies
Applications:	IHC, WB
Recommended Dilution:	WB: 1:500-1:1000, IF: 1:100-1:500, IHC: 1:100-1:500, IHC-F: 1:200, IHC-P: 1:100-1:500
Reactivity:	Human, Mouse, Rat, Chicken
Host:	Rabbit
Clonality:	Polyclonal
Immunogen:	Synthetic peptide comprising residues 1159-1171 [SSVPSSPVSESVL] of the human GluR1 protein.
Formulation:	PBS, 0.02% Sodium Azide. Store at 4C short term. Aliquot and store at -20C long term. Avoid freeze-thaw cycles.
Concentration:	lot specific
Purification:	Immunogen affinity purified
Conjugation:	Unconjugated
Storage:	Store at -20°C as received.
Stability:	Stable for 12 months from date of receipt.
Predicted Protein Size:	132.4 kDa
Gene Name:	glutamate metabotropic receptor 1
Database Link:	<a href="#">NP_000829</a> <a href="#">Entrez Gene 14816 Mouse</a> <a href="#">Entrez Gene 24414 Rat</a> <a href="#">Entrez Gene 2911 Human</a> <a href="#">Q13255</a>



[View online »](#)

**Background:** The Metabotropic Glutamate Receptor mGluR1 binds L-glutamate, the major excitatory neurotransmitter in the central nervous system, which activates both ionotropic and metabotropic glutamate receptors. Glutamatergic neurotransmission is involved in most aspects of normal brain function and can be perturbed in many neuropathologic conditions. mGluR1 and mGluR5 are group I receptors that have been shown to activate phospholipase C. Alternative splice variants of the mGluR1 gene have been described, but their full-length nature has not been determined. Inflammation results in the activation of mGluR1 and mGluR5 in dorsal horn neurons of the spinal cord, leading to extracellular signal-regulated kinase (ERK) activation, which is required for nociceptive plasticity and enhanced pain. mGluR1 has been reported in various regions of the brain and spinal cord. ESTs have been isolated from brain and eye libraries. Caution: GRIA1 refers to Ionotropic Glutamate Receptor 1, not to Metabotropic Glutamate Receptor 1 (mGLUR1).

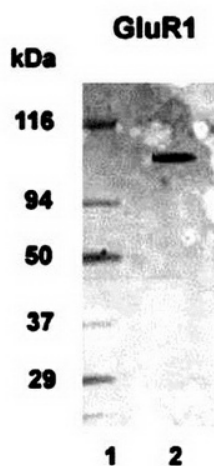
**Synonyms:** GPRC1A; GRM1A; mGlu1; MGLUR1; MGLUR1A; SCAR13

**Note:** This metabotropic Glutamate Receptor 1a antibody is useful for Western Blot, Immunohistochemistry-Frozen and Immunohistochemistry-paraffin applications. Use in Immunocytochemistry/immunofluorescence was reported in scientific literature (PMID: 19688350)

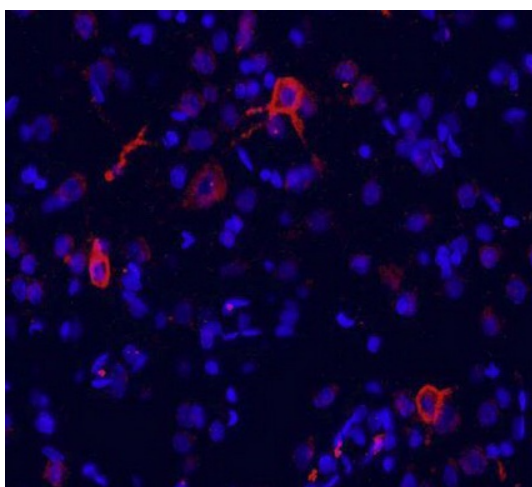
**Protein Families:** Druggable Genome, GPCR, Transmembrane

**Protein Pathways:** Calcium signaling pathway, Gap junction, Long-term depression, Long-term potentiation, Neuroactive ligand-receptor interaction

### Product images:



metabotropic Glutamate Receptor 1a Antibody TA336513 - WB detection of GluR1 in 20 ug of human brain lysate (lane 2) with GluR1 polyclonal antibody at 1:1000 dilution followed by AP-conjugated secondary at 1:5000 dilution. Lane 1 represents the MW marker



Immunohistochemistry-Frozen: metabotropic Glutamate Receptor 1a Antibody TA336513 - Immunofluorescence labeling for GluR1 in rat brain (cingulate cortex). GluR1 detection was done using anti-rabbit Cy3 conjugated antibodies (red color). DAPI was used t