

Product datasheet for **TA336510**

Alkaline Phosphatase (ALPP) Mouse Monoclonal Antibody [Clone ID: 8B6]

Product data:

Product Type:	Primary Antibodies
Clone Name:	8B6
Applications:	ELISA, FC, ICC/IF, IHC, WB
Recommended Dilution:	Flow Cytometry, Immunocytochemistry/ Immunofluorescence: 1:10-1:500, ELISA: 1:100-1:2000, Immunohistochemistry: 1:10-1:500, Western Blot: 1:1000, Immunohistochemistry-Paraffin: 1:100-1:200, Immunohistochemistry-Frozen: 1:10-1:500, Radioimmunoassay
Reactivity:	Human
Host:	Mouse
Isotype:	IgG2a, kappa
Clonality:	Monoclonal
Immunogen:	Hep-2 cells with boosted surface expression of Alkaline Phosphatase, Placental. [UniProt# P05187].
Formulation:	PBS containing 0.05% BSA, 0.05% Sodium Azide. Store at 4C short term. Aliquot and store at -20C long term. Avoid freeze-thaw cycles.
Concentration:	lot specific
Purification:	Protein A purified
Conjugation:	Unconjugated
Storage:	Store at -20°C as received.
Stability:	Stable for 12 months from date of receipt.
Predicted Protein Size:	70 kDa
Gene Name:	alkaline phosphatase, placental
Database Link:	NP_001623 Entrez Gene 250 Human P05187



[View online »](#)

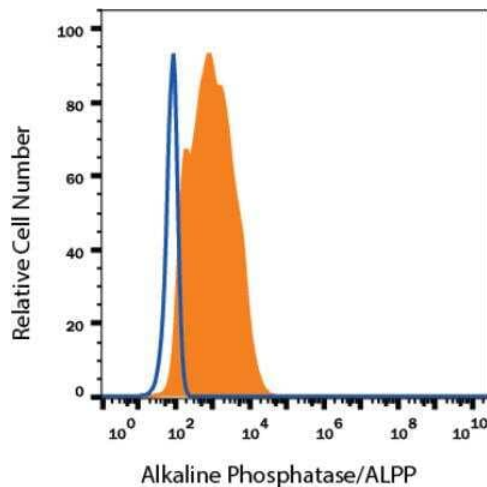
Background: Alkaline Phosphatase, Placental, also known as PLAP and ALPP is an alkaline phosphatase located on the second chromosome. Alkaline phosphatases are phosphodiesterases. The placental-specific isozyme of Alkaline Phosphatase is found in trophoblast cells of normal human mature placenta, seminomas of testis and ovarian carcinomas. The detection of alkaline phosphatase in serum is a marker for ovarian and testicular cancer (PMID: 21809268).

Synonyms: ALP; PALP; PLAP; PLAP-1

Note: This Alkaline Phosphatase, Placental Antibody (8B6) is useful for Immunohistochemistry on paraffin-embedded sections and frozen sections, Immunocytochemistry/Immunofluorescence, ELISA, Western blot and Radioimmunoassay. In WB a band can be seen at ~70 kDa. For IHC, Proteolytic Induced Epitope Retrieval (PIER) is required. Use in Flow Cytometry reported in various pieces of scientific literature

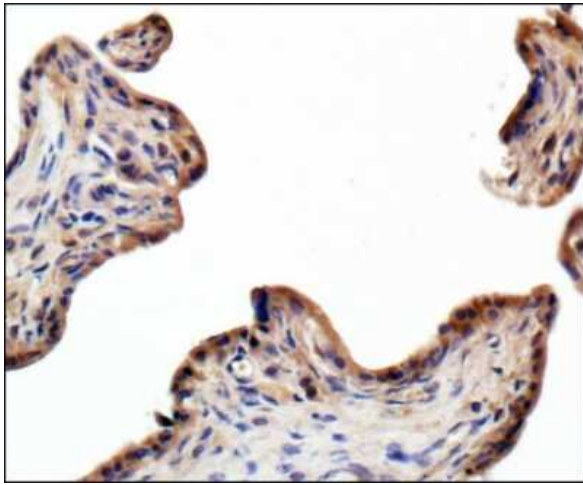
Protein Pathways: Folate biosynthesis, Metabolic pathways

Product images:



Flow Cytometry: Alkaline Phosphatase/ALPP Antibody (8B6) TA336510 - Detection of Alkaline Phosphatase/ALPP in Human HeLa Cell Line by Flow Cytometry. Human HeLa cell line was stained with Mouse Anti- Alkaline Phosphatase/ALPP Monoclonal Antibody (Catalog # TA336510, filled histogram), or Mouse IgG2A isotype control (Catalog # MAB003, open histogram) followed by APC-conjugated Anti-Mouse IgG Secondary Antibody (Catalog # F0101B). To facilitate intracellular staining, cells were fixed with Flow Cytometry Fixation Buffer (Catalog # FC004) and permeabilized with Flow Cytometry Permeabilization/Wash Buffer I (Catalog # FC005).

Images may not be copied, printed or otherwise disseminated without express written permission of Novus Biologicals a bio-technie brand.



Immunohistochemistry-Paraffin: Alkaline Phosphatase/ALPP Antibody (8B6) TA336510 - Alkaline Phosphatase, Placental Antibody (8B6) TA336510 - IHC staining of Alkaline Phosphatase (Placental) in human placenta using DAB with hematoxylin counterstain. Proteolytic Induced Epitope Retrieval (PIER) was used.



Western Blot: Alkaline Phosphatase/ALPP Antibody (8B6) TA336510 - Analysis of Alkaline Phosphatase (Placental) expression in JAR whole cell lysate.