

## Product datasheet for **TA336495**

### MMP3 Rabbit Polyclonal Antibody

#### Product data:

Product Type:	Primary Antibodies
Applications:	IHC, WB
Recommended Dilution:	Western Blot: 1:500- 1:1000, Immunohistochemistry-Paraffin: 1:50-1:100, Immunohistochemistry: 1:50-1:200
Reactivity:	Human, Mouse, Rat
Host:	Rabbit
Clonality:	Polyclonal
Immunogen:	A synthetic peptide made to an C-terminal portion of the human MMP3 protein (between residues 400-477) [UniProt P08254]
Formulation:	PBS, 0.02% Sodium Azide. Store at 4C short term. Aliquot and store at -20C long term. Avoid freeze-thaw cycles.
Concentration:	lot specific
Purification:	Immunogen affinity purified
Conjugation:	Unconjugated
Storage:	Store at -20°C as received.
Stability:	Stable for 12 months from date of receipt.
Predicted Protein Size:	53 kDa
Gene Name:	matrix metalloproteinase 3
Database Link:	<a href="#">NP_002413</a> <a href="#">Entrez Gene 17392 Mouse</a> <a href="#">Entrez Gene 171045 Rat</a> <a href="#">Entrez Gene 4314 Human</a> <a href="#">P08254</a>



[View online »](#)

**Background:**

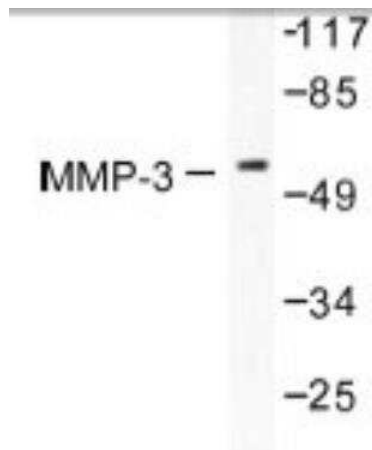
Matrix metalloproteinase 3 (MMP3), also known as Stromelysin-1, SL-1, and STMY1, is a member of the matrix metalloproteinase (MMP) family. Members of the MMP family are involved in the breakdown of the extracellular matrix in response to normal physiological and disease processes; these processes include embryonic development, reproduction, tissue remodeling, arthritis and metastasis. The majority of MMP proteins are secreted into the extracellular matrix as inactive proproteins; they are activated when cleaved by an extracellular proteinase. The MMP3 gene contains four hemopexin-like domains, and is part of a cluster of MMP genes that localize to chromosome 11q22.3. This gene encodes the MMP3 enzyme that degrades fibronectin, laminin, gelatins (type I, III, IV and V), collagens (type III, IV, X, and IX), and cartilage proteoglycans. Additionally, the MMP3 enzyme activates procollagenase. Areas of interest for MMP3 include wound repair, progression of atherosclerosis, and tumor initiation.

**Synonyms:**

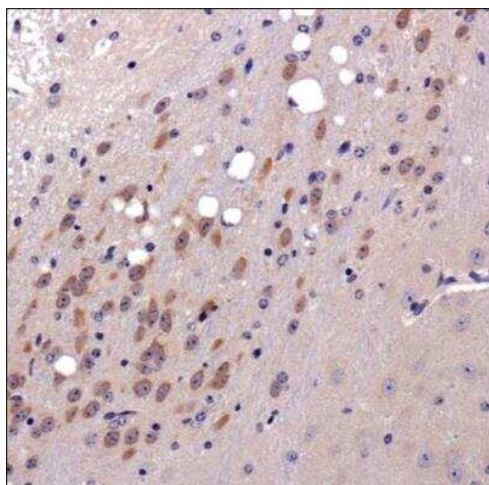
CHDS6; MMP-3; SL-1; STMY; STMY1; STR1

**Protein Families:**

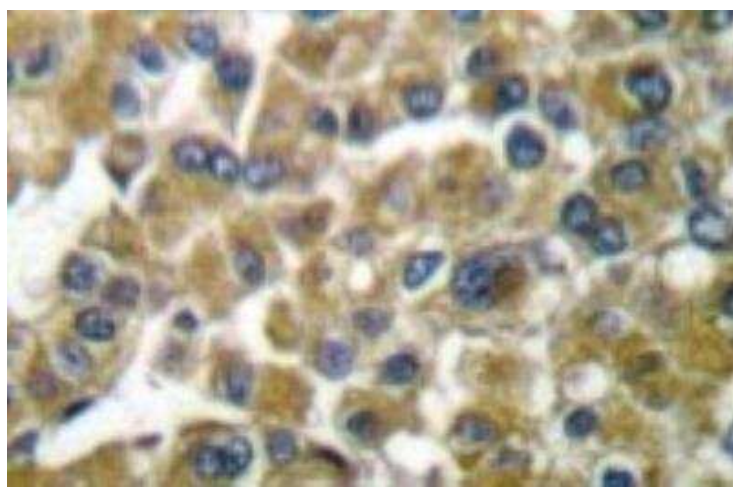
Druggable Genome, Protease

**Product images:**

Western Blot: MMP-3 Antibody TA336495 - Analysis of MMP-3 (S453) antibody in extracts from 293 cells.



Immunohistochemistry-Paraffin: MMP-3 Antibody TA336495 - Analysis of mouse brain.



Immunohistochemistry-Paraffin: MMP-3 Antibody TA336495 - Analyzes of paraffin-embedded human breast carcinoma tissue.