

Product datasheet for **TA336489**

Cytokeratin 19 (KRT19) Rabbit Polyclonal Antibody

Product data:

Product Type:	Primary Antibodies
Applications:	FC, ICC/IF, IHC, Simple Western, WB
Recommended Dilution:	Simple Western: 1:1000, Flow Cytometry: 2-5 ug/million cells, Immunohistochemistry-Paraffin: 1:500, Immunohistochemistry: 1:500, Immunocytochemistry/ Immunofluorescence: 1:50-1:100, Western Blot: 1:1000
Reactivity:	Human
Host:	Rabbit
Clonality:	Polyclonal
Immunogen:	Synthetic peptide derived from the C-terminal region of human Cytokeratin 19 (between residues 350-400) [UniProt P08727]
Formulation:	PBS, 0.02% Sodium Azide. Store at -20C. Avoid freeze-thaw cycles.
Concentration:	lot specific
Purification:	Affinity purified
Conjugation:	Unconjugated
Storage:	Store at -20°C as received.
Stability:	Stable for 12 months from date of receipt.
Gene Name:	keratin 19
Database Link:	NP_002267 Entrez Gene 3880 Human P08727



[View online »](#)

Background:

Cytokeratin 19 (KRT19) is an intermediate filament (IF) protein that is part of the Keratin family of proteins. This protein is also known by the names of Keratin 19 or Keratin type I Cytoskeletal 19. The Keratin family consists of Keratin 1-20, which are divided into two subtypes: Type 1 contains the acidic Cytokeratin proteins consisting of Cytokeratins 9-20, including KRT19; Type 2 Keratins include the basic to neutral protein and contains Cytokeratin 1-8. Type 1 and Type 2 Keratins often form oligomers, interacting to create heterotypic chains. However, KRT19 is unique in that while being the smallest of the Type 1 Keratin proteins, it does not interact with any Type 2 Keratins. IF proteins such as KRT19 are integral for defining and maintaining cellular structure and morphology, and are important for cellular integrity by anchoring to membrane complexes via proteins such as Epiplakin, Trichoplein, Periplakin, Plakophilins, Plectin, BPAG1, Desmoplakin, and Envoplakin. KRT19 is also involved in the organization of the myofibers of striated muscle. KRT19 and other Cytokeratin proteins are mainly found in epithelial cells, with KRT19 being expressed exclusively in defined zones of basal keratinocytes. KRT19 is an important biomarker for breast cancer cells, tumor cells of the lymph nodes, peripheral blood, and bone marrow. Cytokeratin 19 can be expressed with KRT8 and KRT18 to differentiate cells of epithelial lines from hematopoietic tumor cells in the peripheral blood.

Synonyms:

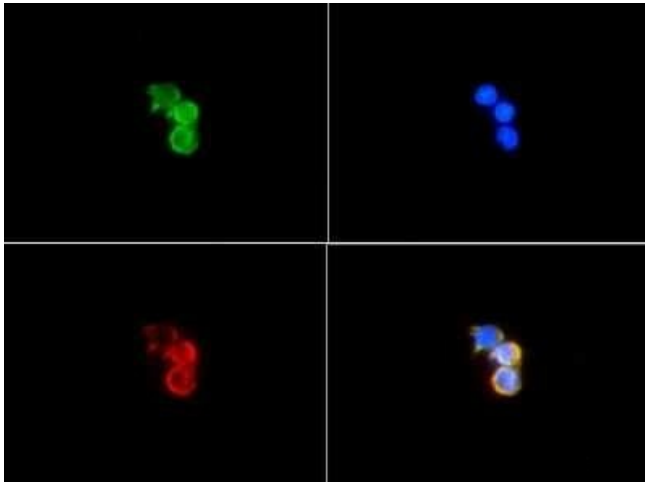
CK19; K1CS; K19

Note:

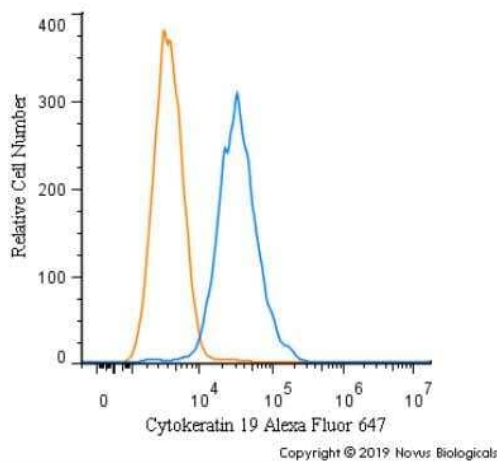
This Cytokeratin 19 antibody is useful for Western Blot where a band is seen ~44 kDa, Immunocytochemistry/Immunofluorescence, and Immunohistochemistry-paraffin sections. Prior to immunostaining paraffin tissues, antigen retrieval with sodium citrate buffer (pH 6.0) is recommended.

Product images:

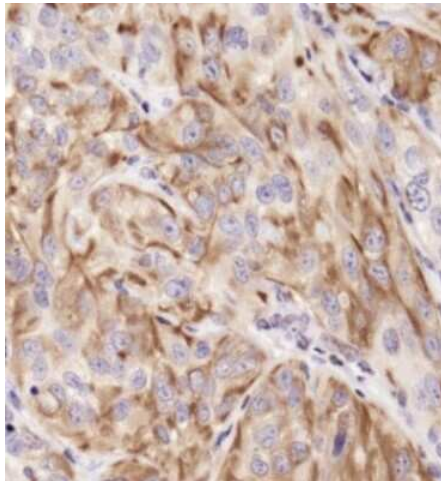
Simple Western: Cytokeratin 19 Antibody TA336489 - Lane view shows a specific band for Cytokeratin 19 in 0.5 mg/ml of HepG2 lysate. This experiment was performed under standard reducing conditions using the 12-230 kDa separation system.



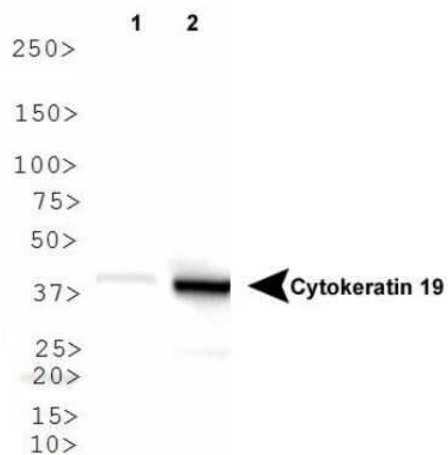
Immunocytochemistry/Immunofluorescence: Cytokeratin 19 Antibody TA336489 - Analysis of Cytokeratin 19 in MCF7 cells using Cytokeratin 19 antibody (green). Nuclei and alpha-tubulin were counterstained with DAPI (blue) and DyLight 550 (red).



Flow Cytometry: Cytokeratin 19 Antibody TA336489 - An intracellular stain was performed on MCF7 cells with Cytokeratin 19 Antibody TA336489AF647 (blue) and a matched isotype control (orange). Cells were fixed with 4% PFA and then permeabilized with 0.1% saponin. Cells were incubated in an antibody dilution of 2.5 ug/mL for 30 minutes at room temperature. Both antibodies were conjugated to Alexa Fluor 647.



Immunohistochemistry: Cytokeratin 19 Antibody TA336489 - Staining of Cytokeratin 19 in human kidney carcinoma using DAB with hematoxylin counterstain.



Western Blot: Cytokeratin 19 Antibody TA336489
- Analysis of Cytokeratin 19 in 1) HepG2 and 2) MCF7 lysates.