

Product datasheet for **TA336488**

CD68 Mouse Monoclonal Antibody [Clone ID: KP1]

Product data:

Product Type:	Primary Antibodies
Clone Name:	KP1
Applications:	IHC
Recommended Dilution:	WB: 1:100, IHC: 1:10-1:200, IHC-F: 1:10-1:200, IHC-P: 1:10-1:200
Reactivity:	Human, Mouse, Rat
Host:	Mouse
Isotype:	IgG1, kappa
Clonality:	Monoclonal
Immunogen:	Subcellular fraction of human alveolar macrophages.
Formulation:	Preservative: 0.1% Sodium Azide. Store at 4C. Do not freeze.
Concentration:	lot specific
Purification:	Tissue culture supernatant
Conjugation:	Unconjugated
Storage:	Store at -20°C as received.
Stability:	Stable for 12 months from date of receipt.
Gene Name:	CD68 molecule
Database Link:	NP_001242 Entrez Gene 12514 Mouse Entrez Gene 287435 Rat Entrez Gene 968 Human P34810

Background: CD68, also known as GP110, LAMP4, and SCARD1, encodes a 110-kD transmembrane glycoprotein that is highly expressed by human monocytes and tissues. CD68 is a member of the lysosomal/endosomal-associated membrane glycoprotein (LAMP) family and favors binding to lectins through its heavily glycosylated extracellular domain. Furthermore, CD68 has also been found to be a member of the scavenger receptor family, whose main purpose is to clear cellular debris and regulate phagocytosis and macrophage recruitment. Recent studies have investigated the role of tumor related macrophages using CD68 as a probe (PMID: 22931216), as well as their involvement in the progression of other cancers (PMID: 21113139).



[View online »](#)

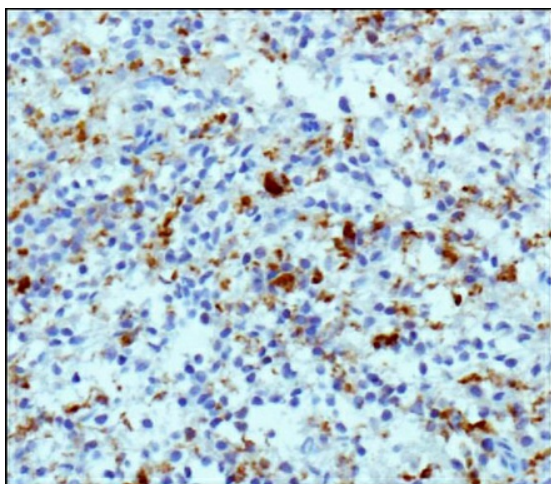
Synonyms: GP110; LAMP4; SCARD1

Note: This CD68 Antibody (KP1) is useful for Immunohistochemistry on frozen fixed and paraffin-embedded sections, Immunoprecipitation, Western blot and Immunocytochemistry/Immunofluorescence. IHC: For an ABC system, dilute 1:20 and incubate for 30-60 minutes at RT. Formalin fixed paraffin embedded tissue sections require high temperature antigen unmasking with 10 mM citrate buffer, pH 6.0 prior to immunostaining. Use in Flow Cytometry reported in scientific literature (PMID 18405323)

Protein Families: Druggable Genome, Transmembrane

Protein Pathways: Lysosome

Product images:



Immunohistochemistry-Paraffin: CD68 Antibody (KP1) TA336488 - IHC staining of CD68 in human spleen using DAB with hematoxylin counterstain.